

Umatilla National Forest

23

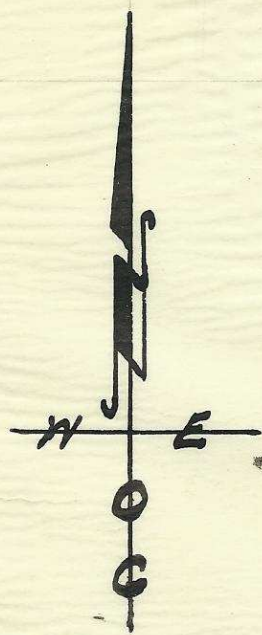
24

26

25

35

36



U.S.

U.S.

U.S.

U.S.

U.S.

Map showing

SW/4 of S.W/4 of Sec. 23.	40
All of Sec. 26.	640
W/2 of W/2 of Sec. 35	160
W/2 of W/2 of Sec. 25	} 280
S.E/4 of N.W/4 of Sec. 25	
S.E/4 of S.W/4 of Sec. 25	
N.E/4 of S.E.4 of Sec. 25	
	<u>1120 A</u>

T. 4 S., R. 30 E. W.M.  
 Platted By W. E. O. Criger.  
 Scale: 4" = 1 Mile.



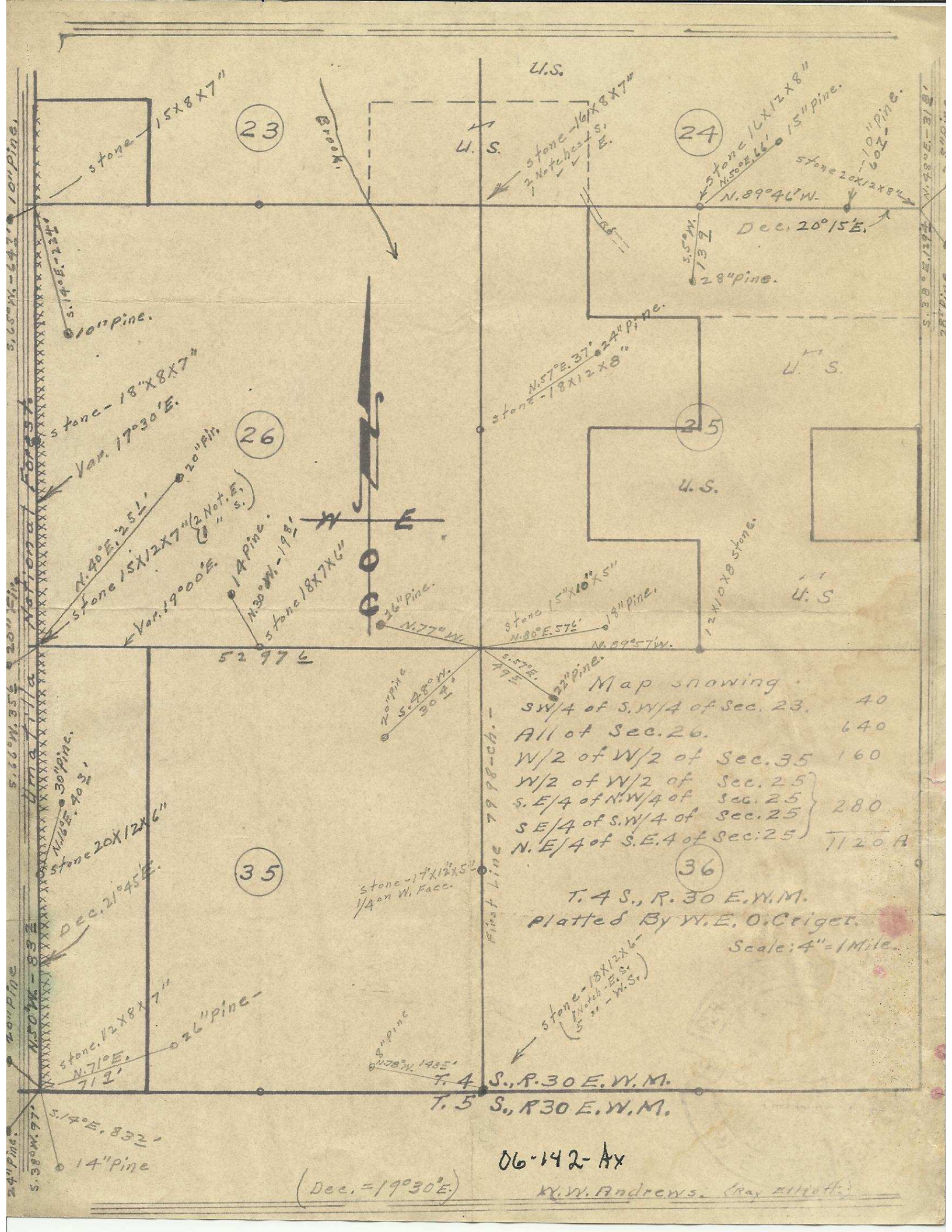
T. 4 S., R. 30 E. W.M.  
 T. 5 S., R. 30 E. W.M.



Db-142-Ax

K. W. Andrews. (Ray Elliott)

4



Map showing.

SW/4 of S.W/4 of Sec. 23.	40
All of Sec. 26.	640
W/2 of W/2 of Sec. 35	160
W/2 of W/2 of Sec. 25	280
S.E/4 of N.W/4 of Sec. 25	
SE/4 of S.W/4 of Sec. 25	
N.E/4 of S.E.4 of Sec. 25	7120 A

T. 4 S., R. 30 E. W. M.  
 Platted By W. E. O. Cziger.  
 Scale: 4" = 1 Mile.

T. 4 S., R. 30 E. W. M.  
 T. 5 S., R. 30 E. W. M.

06-142-Ax  
 X. V. Andrews. (Ray Elliott)

(Dec. = 19°30'E.)