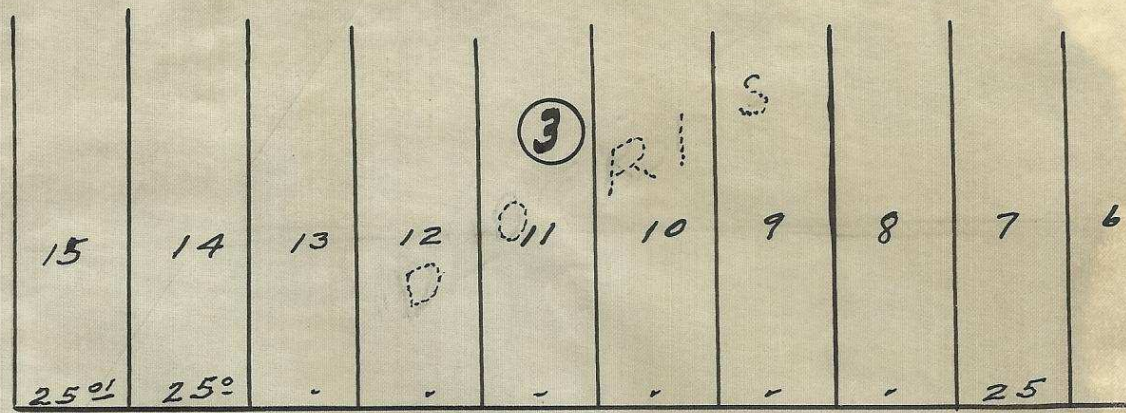


70' Bollons St.



60'

Stone Monument on 35'

MAIN ST.

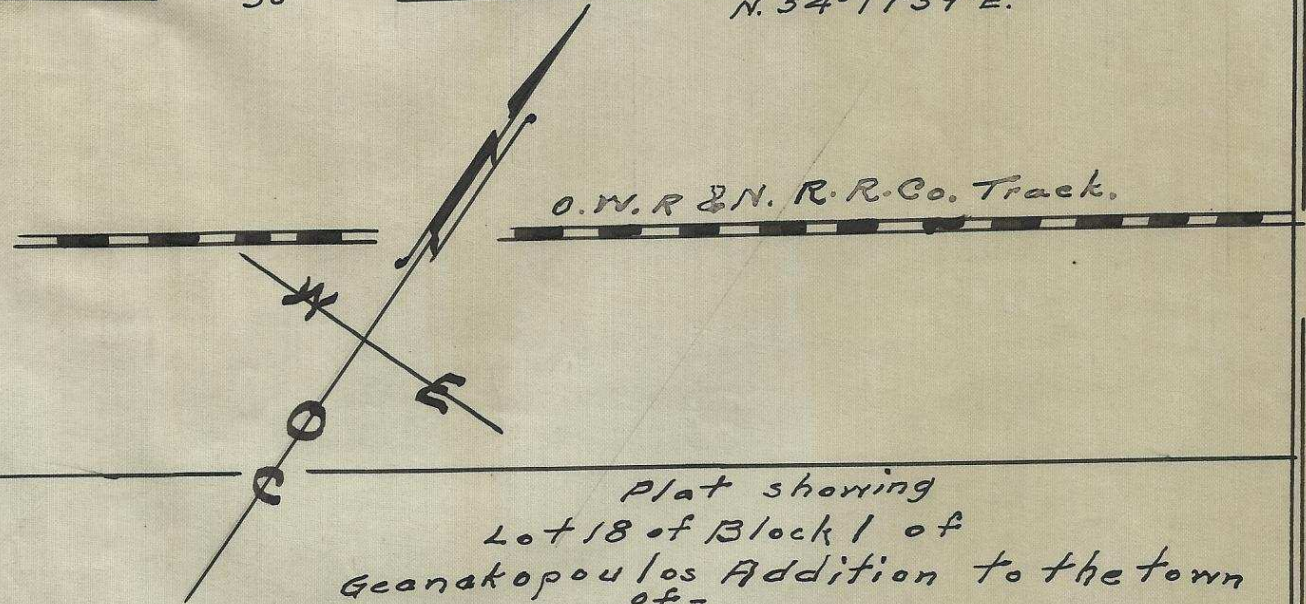
Initial Point.

30'
80'

Railroad St.



100'



Plat showing Lot 18 of Block 1 of Geanakopoulos Addition to the town of -

Doris - Oregon. (Rieth)

surveyed, staked & platted - Jan. 1952 By H. L. Melton - Reg. Prof. Engineer Oregon. Scale 1"=40'

20327ce

06-129-Ax