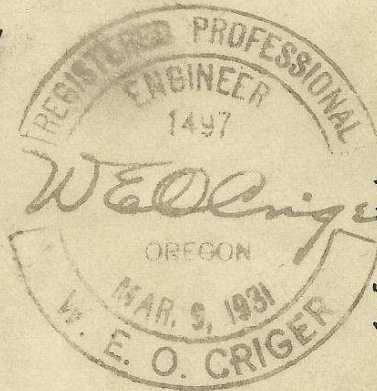
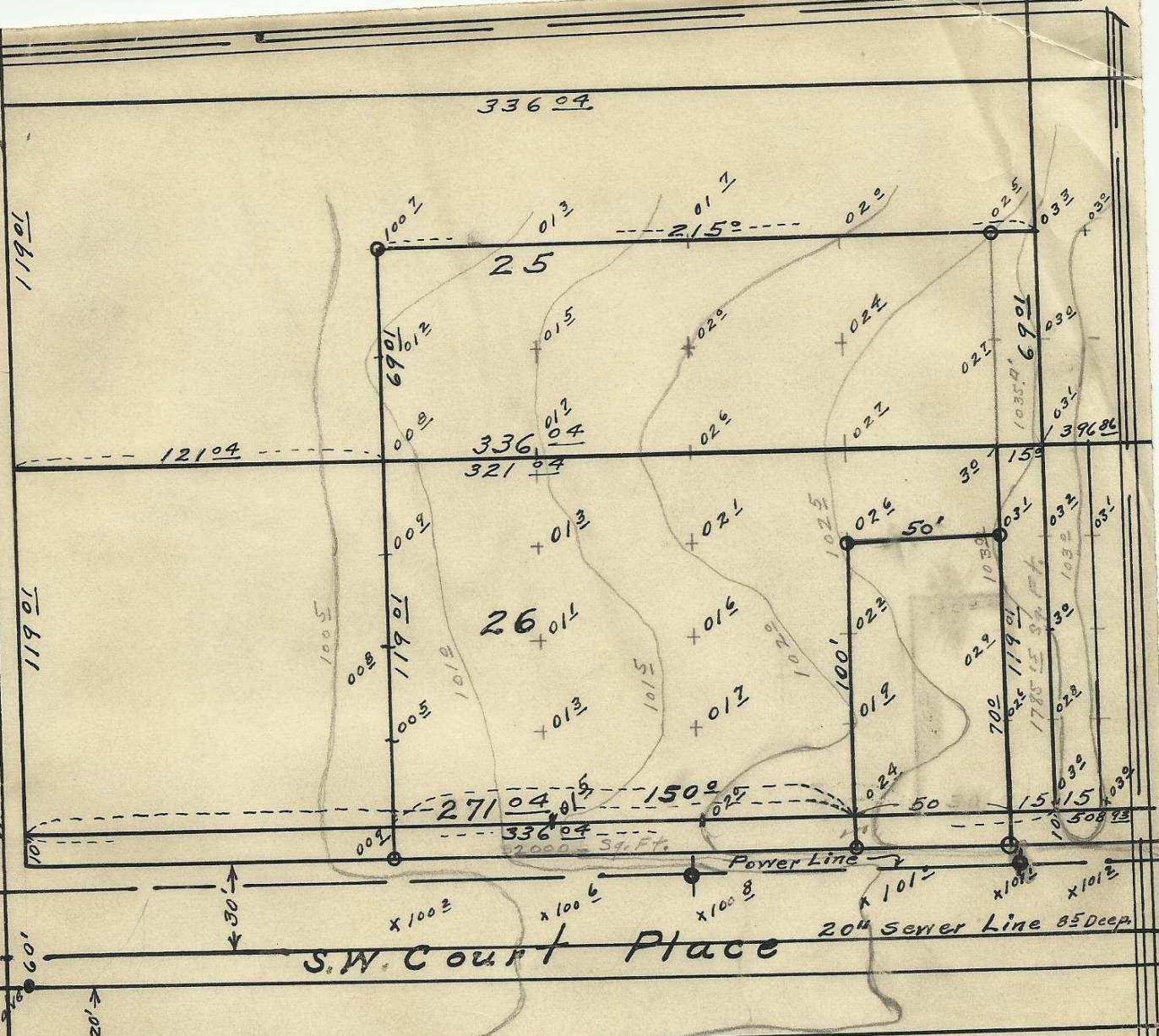


S.W. 20th St.

MH 85' Deep
BM E. 1100 - Fl. 9/5
Gate Valve

(N. Line Eminent to Bndry. 423 43)
(Bdry to S. Line Court. - 336 3)

Tel. Line



Plat showing
Block 25 & 26 of Hazel Addition
to the town, now City of Pendleton
- Oregon -
surveyed, staked and platted.
Jan. 1949. By W. E. O. Criger.
Scale: 1 inch = 50 Feet.

2N3210BC

06-114-Ax