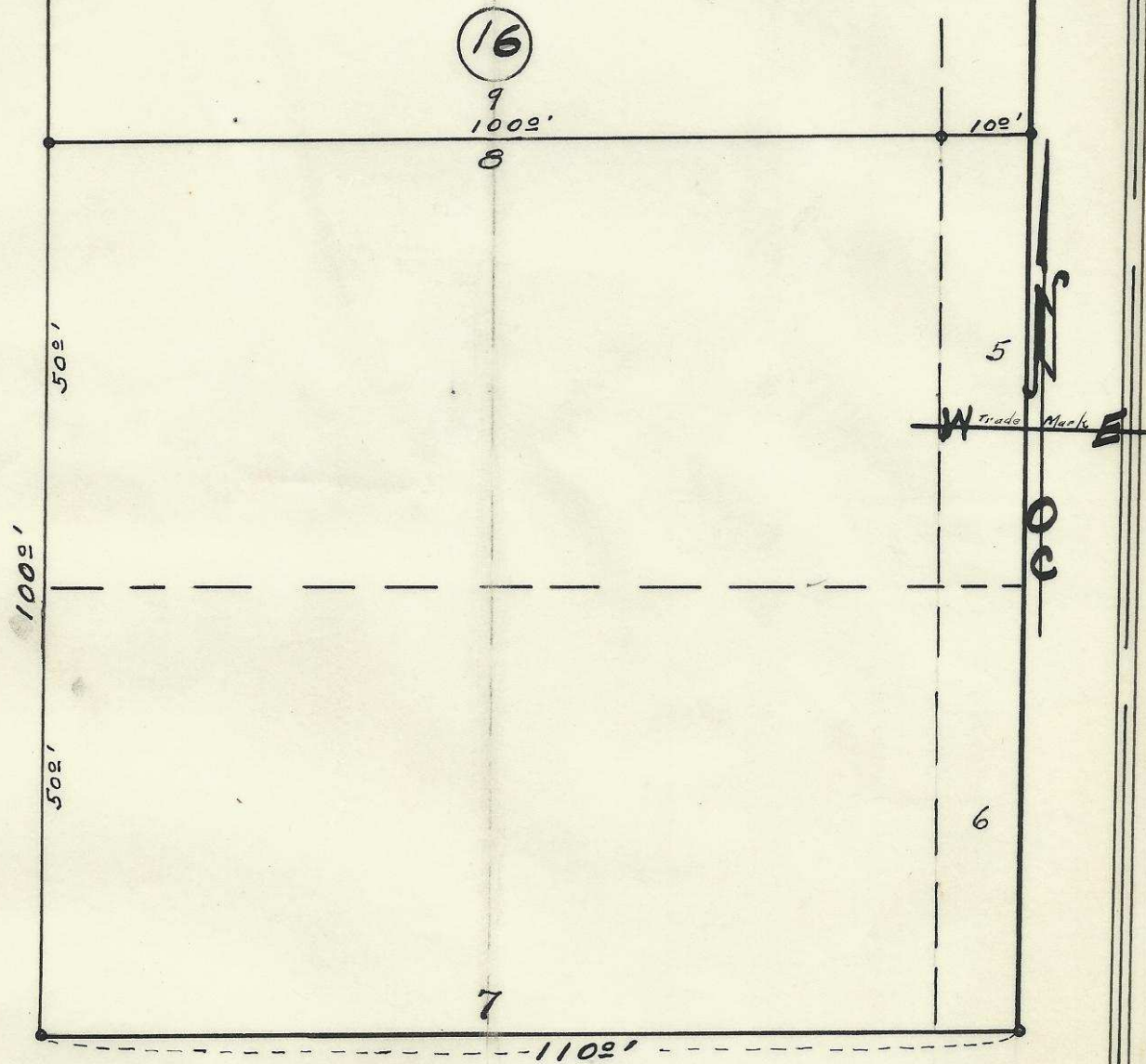


N. Main Street 80ft. wide



N.E. Furnish Ave. 60ft. wide Livermores

Plat showing  
lots 7 & 8 of Block 16 of Switzer's Add'n  
To the town, now City of  
Pendleton, Oregon.  
Surveyed, staked, and platted -  
Sept. 1951 - By W.E. Criger -  
Scale: 1" = 20'

20323DD



W.E. Criger



06-11-Ax