

O.W.R. + N. R. R.

S. 85° 14' E, 1344'

940'

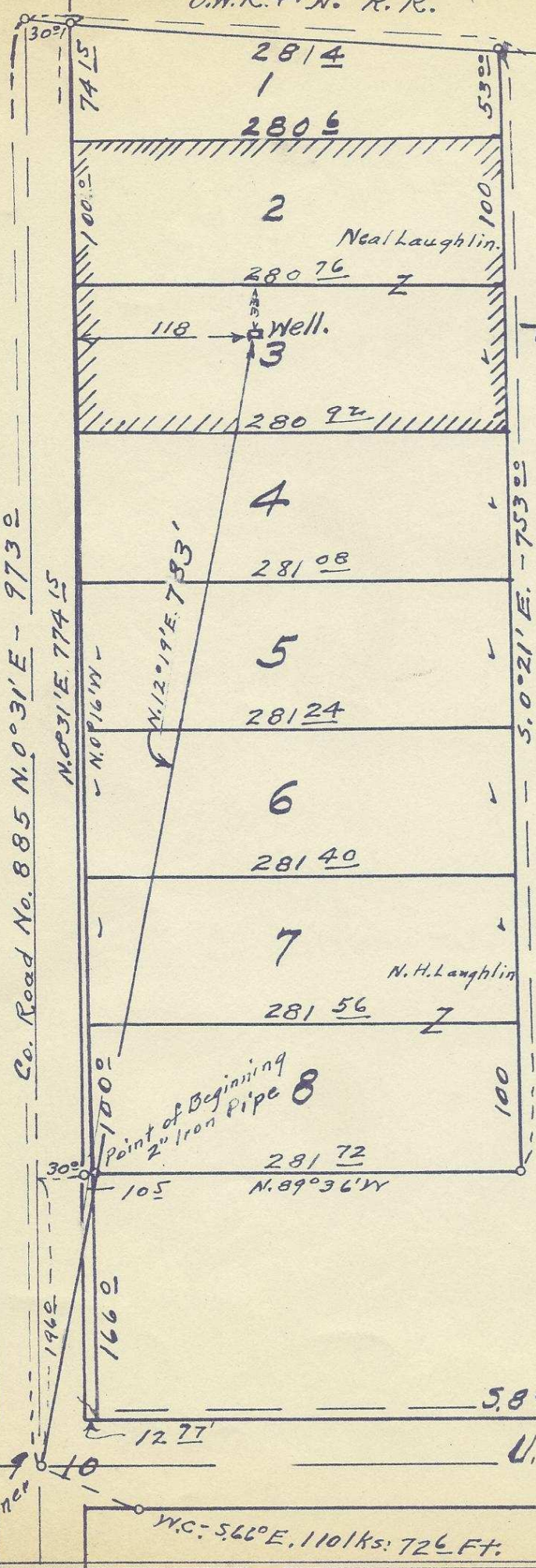
Co. Road No. 885 N. 0° 31' E - 973'

N. 0° 31' E, 774.5'

N. 0° 16' W

N. 12° 19' E, 783'

S. 0° 21' E, -753'



2814

2806

2

28076

Well.

28092

4

28108

5

28124

6

28140

7

28156

28172

Neal Laughlin.

N. H. Laughlin

Point of Beginning
2" Iron Pipe



Plat of Mission Tracts.
 showing proposed well
 location in Tract No. 2.
 in S. W/4 of N. W/4 of
 Sec. 10 - T. 2 N., R. 33 E., W. M.
 Pendleton, Umatilla Co., Ore.
 Located and platted
 May 1, 1950 - By W. E. O. Criger.
 Scale: 1" = 100'

S. 89° 36' E - 851.2

U.S. HIGHWAY 30

1/4 Corner

N.C.: S. 66° E, 1101 ks: 726 Ft.

06-67-Ax