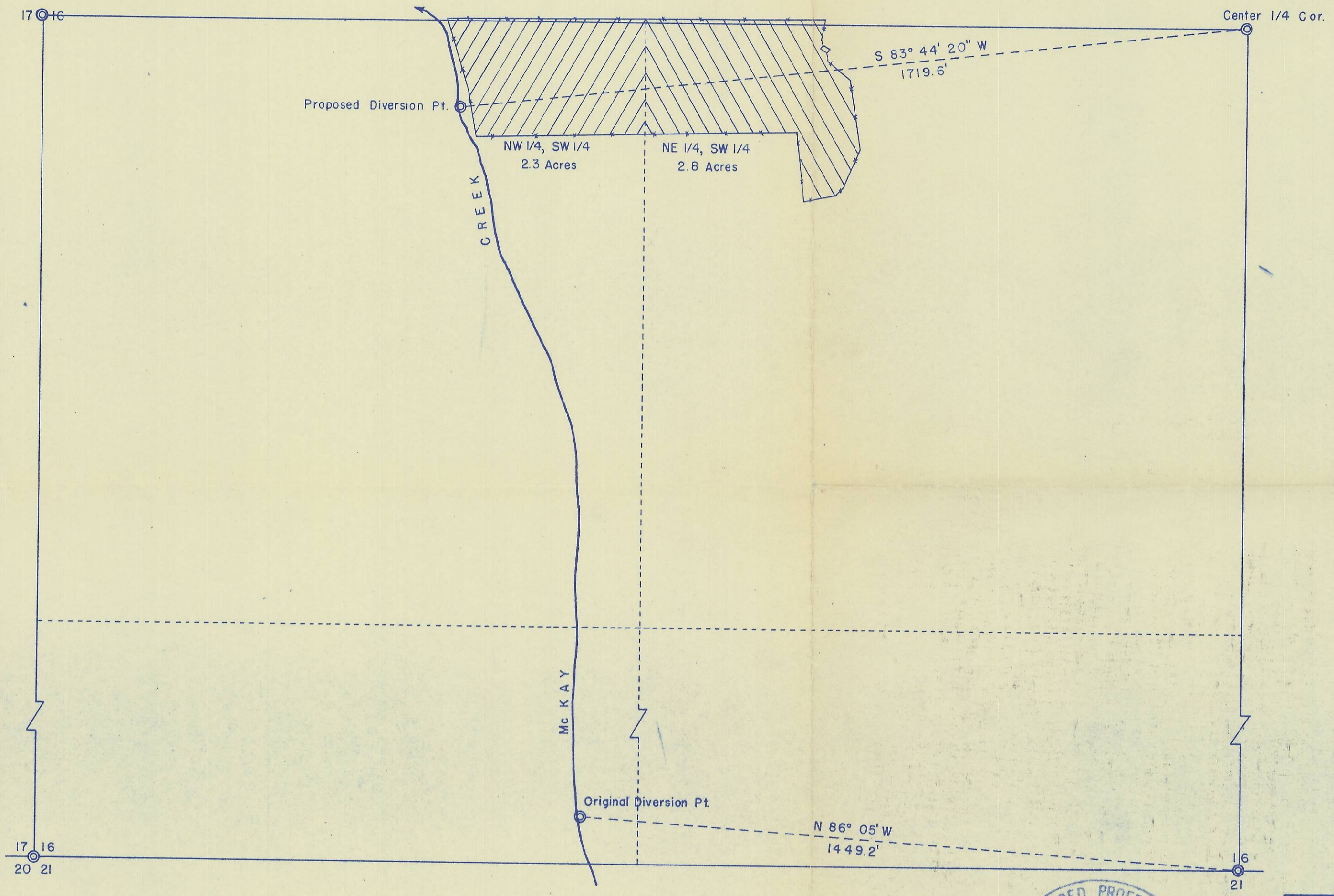


Q-400-A
orig



HAYES & HARRIS ENGINEERING		
SURVEY FOR HILL MEAT CO. <i>Q-400-A</i>		
CHANGE OF DIVERSION POINT NW 1/4, SW 1/4, SEC. 16, T. 2 N., R. 32 E., W.M.		
SCALE 1" = 200'	DATE 4-25-55	DRAWN BY W.O.H.

16 CB & CT