

TACK IN LEAD
0.49
0.24

1/2" IRON ROD
10.38

24.68
K0.16

DETAIL LOT 10

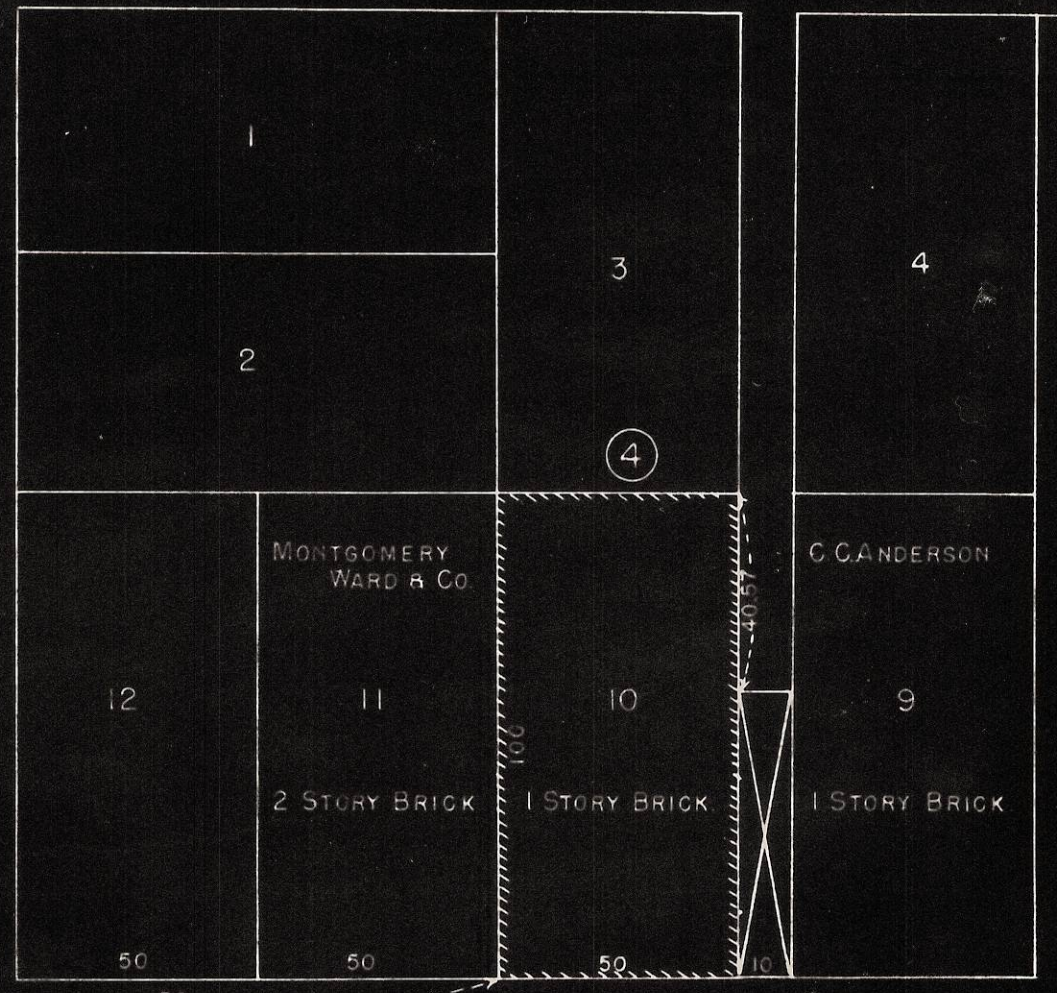
SOLID LINE - LOT
BROKEN LINE - PRESENT BUILDING

SCALE 1"=10'

MAIN

AVE.

COURT



MONTGOMERY
WARD & CO.

C.C. ANDERSON

2 STORY BRICK

1 STORY BRICK

1 STORY BRICK

1 STORY BRICK

MONUMENT

STREET

N. 23°-36' W.

SCALE 1"=40'

REGISTERED
OREGON
LAND SURVEYOR
Elmo E. Robnett
MARCH 8 1946
ELMO E. ROBNETT
109

NW 1/4 NW 11

LOT 10 BLOCK 4
ORIGINAL TOWN
PENDLETON, UMATILLA CO.
OREGON
JUNE 1948

Q-328-A

468

COURTAY
IN LEAD
39.30 TO C.
O. MAIN ST

39.29 TO C.
TOP-0.17
MAIN ST. TACK IN LEAD.

ELMO E. ROBNETT
Registered Land Surveyor

Box 0176
MILTON, OREGON

LOT 10, BLOCK 4
Original Town of Pendleton

From the Monument at Court and Main, the Lot and Block
was run according to the duly recorded plat at the distances
as shown by the accompanying plat.