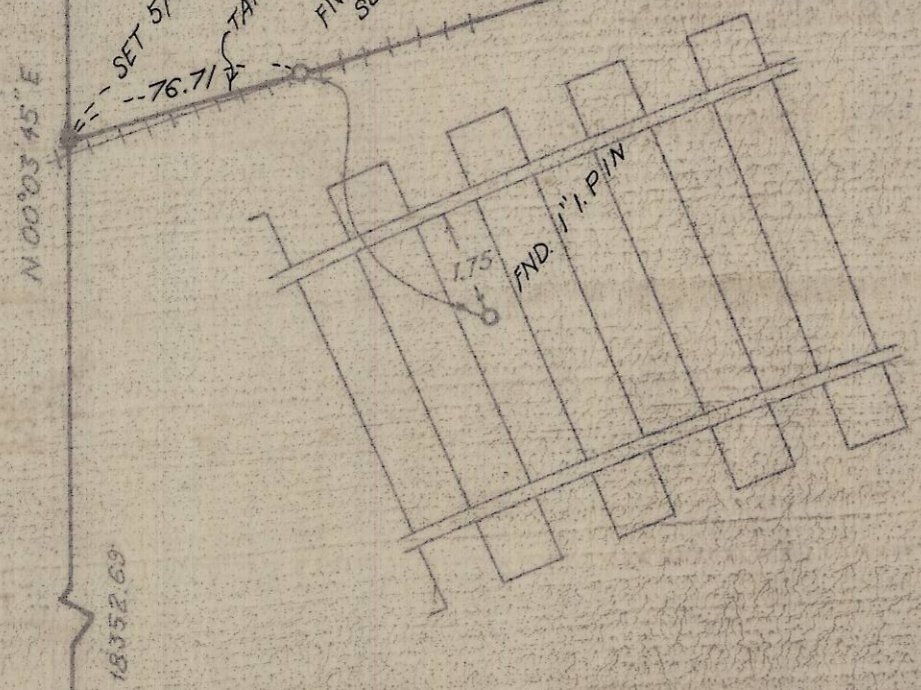
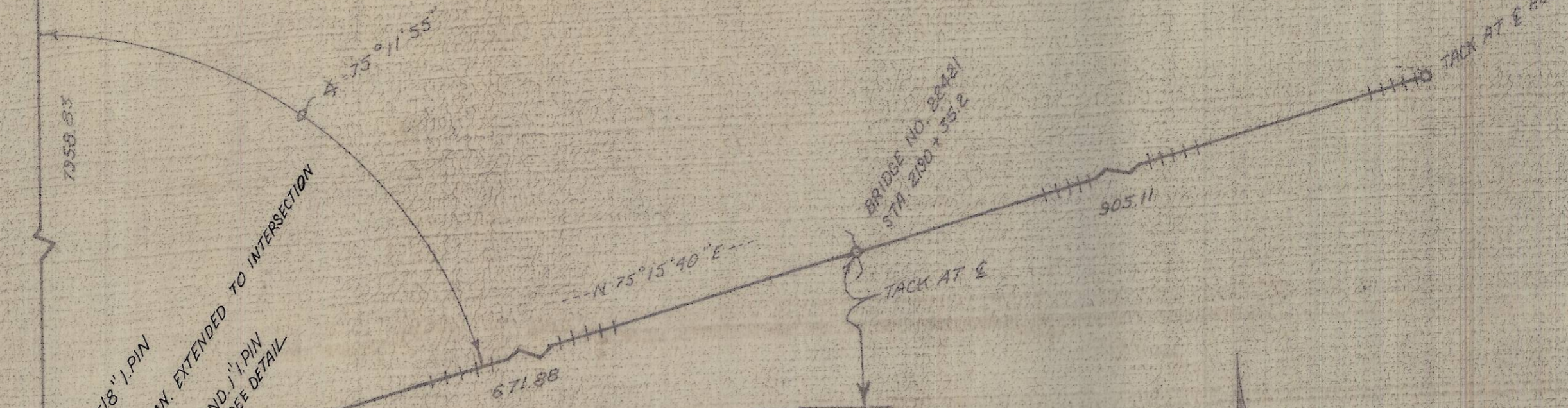


T3N.R35E T3N.R34E  
 T2N.R33E T2N.R34E

FND. TOWNSHIP  
 CORNER 2" PIPE

NOTE: BEARINGS AND DIST. SHOWN  
 ARE TRUE, BASED UPON TIES TO  
 N.G.S. STA. MISSION AND HOMLY.



N 00°03'45" E  
 76.71  
 SET 5/8" I.P.I.N.  
 FND. 1" I.P.I.N. SEE DETAIL

SEC. 24 SEC. 30  
 SEC. 36 SEC. 31

FND. BRASS CAP



<b>KRUMBEIN ENGINEERING CO.</b> ENGINEERS - SURVEYORS - PLANNERS 216 S.E. 1st, Pendleton, Oregon	SCALE 1" = 60'
	DATE 18 AUG. 76
SURVEY FOR: UNION PACIFIC RAILROAD R/R INTERSECTION WITH RANGE LINE NEAR R/R STA 2196+40.5	DRN. BY J.L.C.
	CKD. BY D.H.K.
	DRNG. NO. 76-41 B

L-35

L-35-A