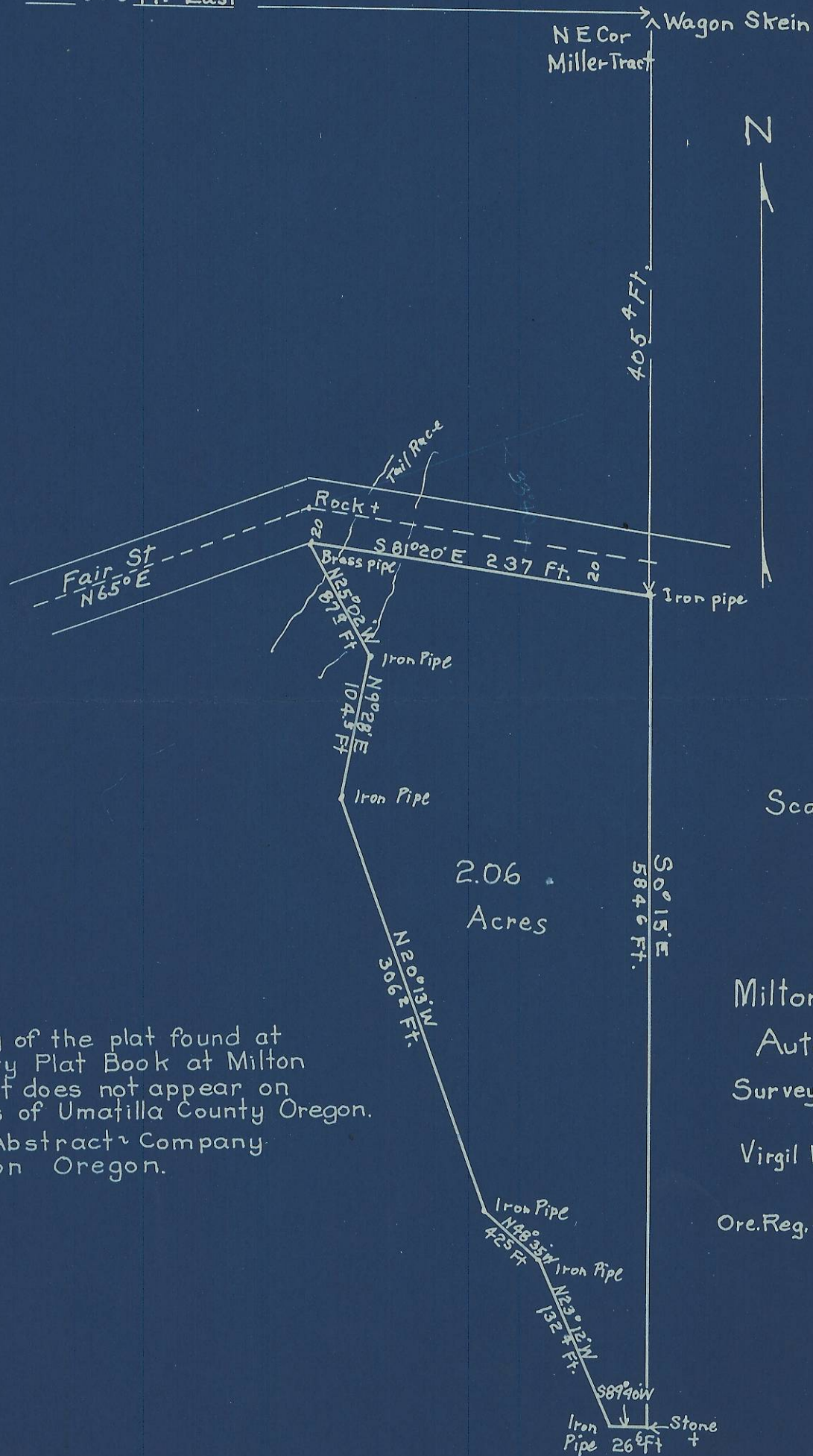


Rock to  
At NW Cor of Miller Tract

660 Ft. East



Scale 100 Ft = 1 in

Milton City  
Auto Park  
Surveyed June 5, 1922.

Virgil Waggoner

Ore. Reg. C.E. No. 270

Note: This is a copy of the plat found at page 144 of the Milton City Plat Book at Milton Oregon. However this plat does not appear on the public official records of Umatilla County Oregon.

Hartman Abstract Company  
Pendleton Oregon.

11-151-A  
(5N 35 12 AC)

5N 35 12 AC