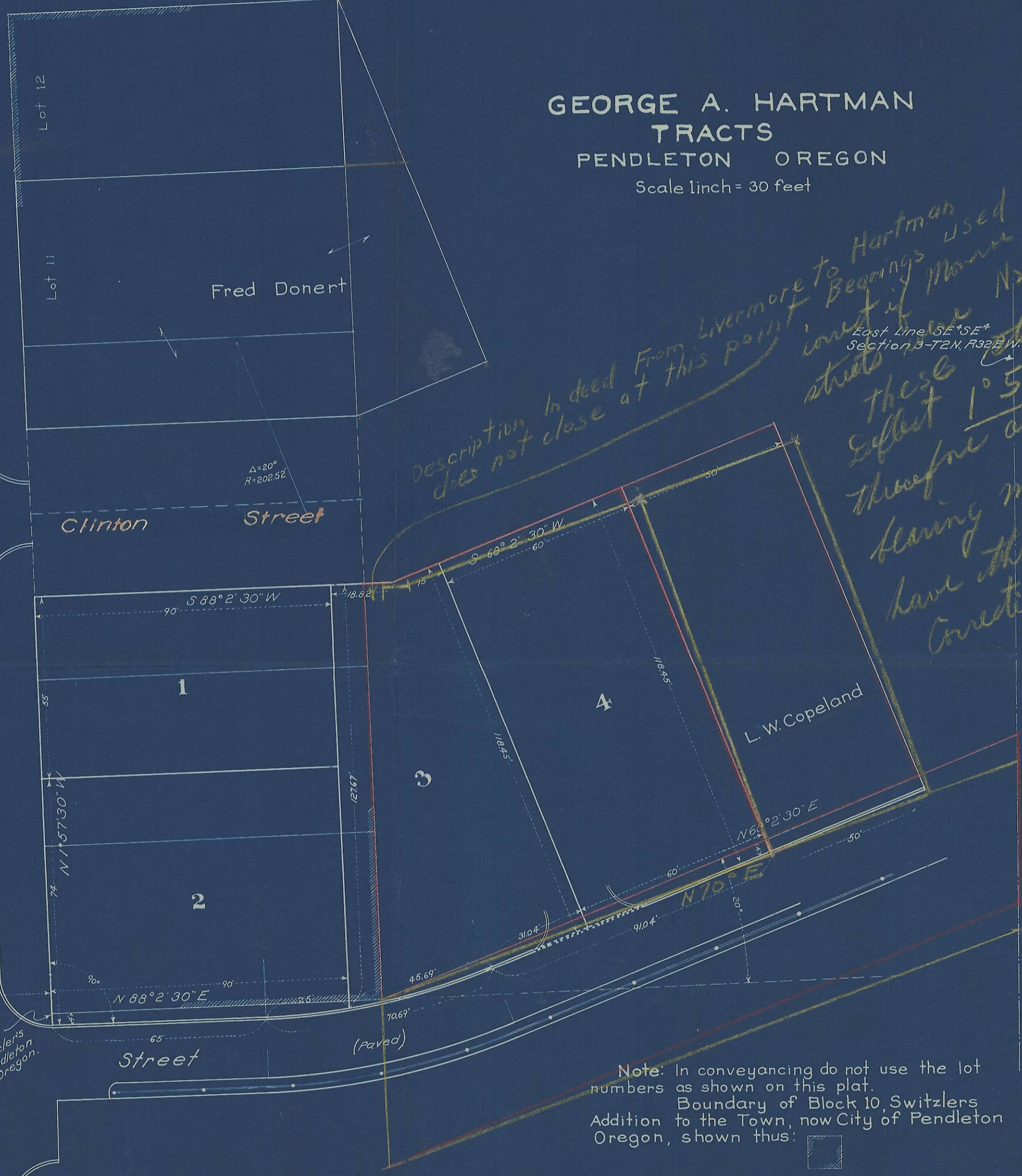




GEORGE A. HARTMAN TRACTS

PENDLETON OREGON

Scale 1 inch = 30 feet



Description in deed from Livermore to Hartman used were Bearings used were West of Monroe and East of Ball Street. These are N-S streets. Effect 1° 57' 30" therefore all bearings must have this correction.

SW Corner Lot 7 Block 10 Switzlers Addition, Pendleton Oregon.

Note: In conveyancing do not use the lot numbers as shown on this plat. Boundary of Block 10 Switzlers Addition to the Town, now City of Pendleton Oregon, shown thus:

2032 300

Hartman Abstract Company
Pendleton Oregon.

0 07-159-A