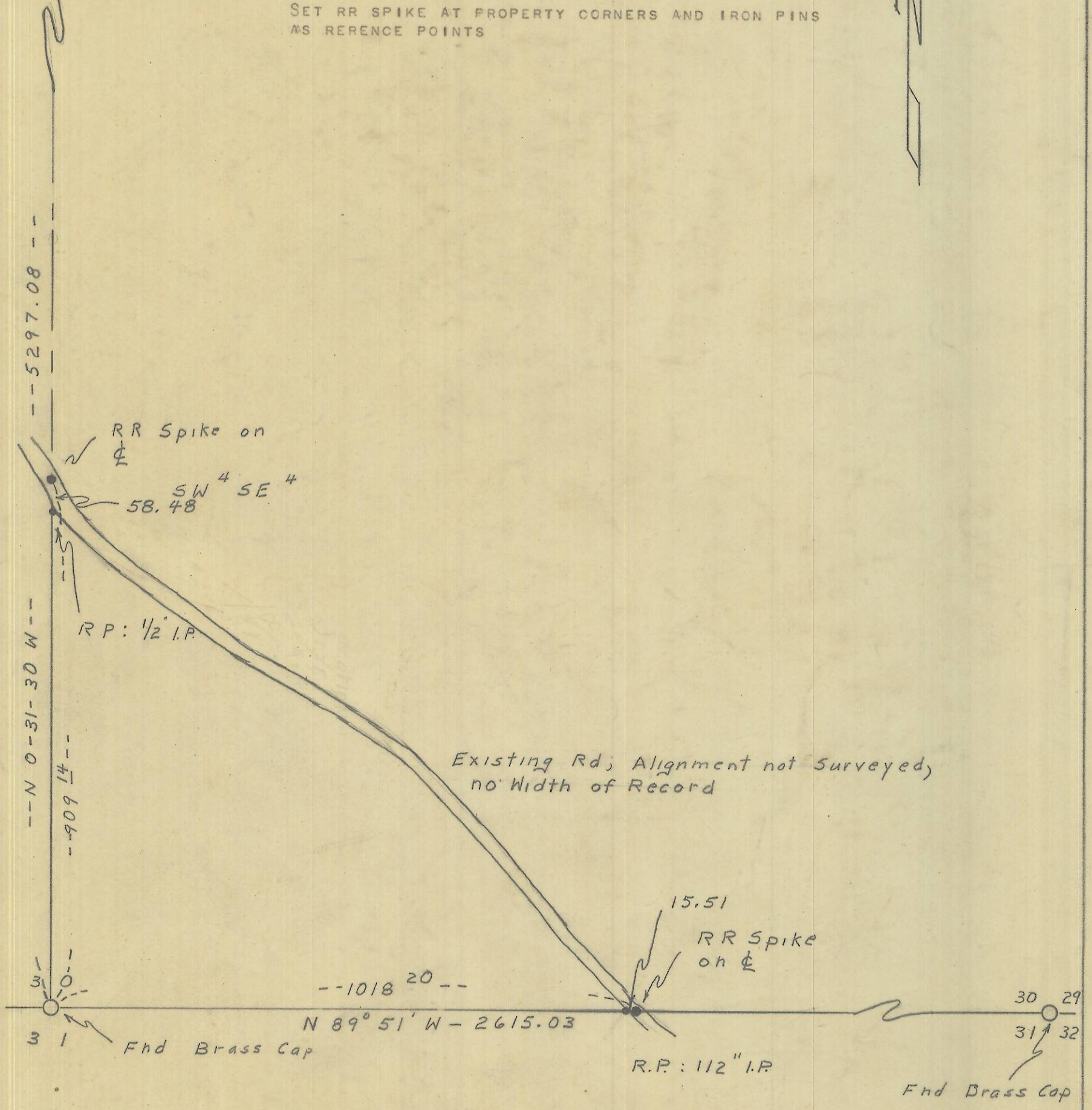
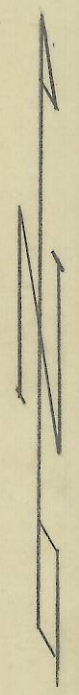


FROM THE SOUTH $\frac{1}{4}$ CORNER OF SEC. 30 I RAN NORTH ON A RANDOM LINE TO THE NORTH $\frac{1}{4}$ CORNER, SAID CORNER BEING A BRASS CAP; THENCE FROM THE SOUTH $\frac{1}{4}$ CORNER I RAN EAST ON A RANDOM LINE TO THE SOUTHEAST CORNER, A BRASS CAP.

USING BEARING OF SOUTH LINE AS N. 89-51 W., AS GIVEN IN GLO NOTES, I CORRECTED THE N-S LINE THROUGH THE CENTER OF SECTION AS N. 0-31-30 W. A DISTANCE OF 5297.08'. THE SOUTH LINE N. 89-51 W. A DISTANCE OF 2615.03'.

SET RR SPIKE AT PROPERTY CORNERS AND IRON PINS AS REFERENCE POINTS



03-158-A

Wayne Harris

03-158-A

WAYNE HARRIS CO. INC.

SURVEY FOR: DARREL RAND	
LOCATION: SW ⁴ SE ⁴ Sec 30 T 4N, R 38 E WM	
DATE	12-15-81
SCALE	1" = 200'
DRAWN BY	wch
CHECK BY	wch
FILE	175
JOB	
DRAWING	96-35A