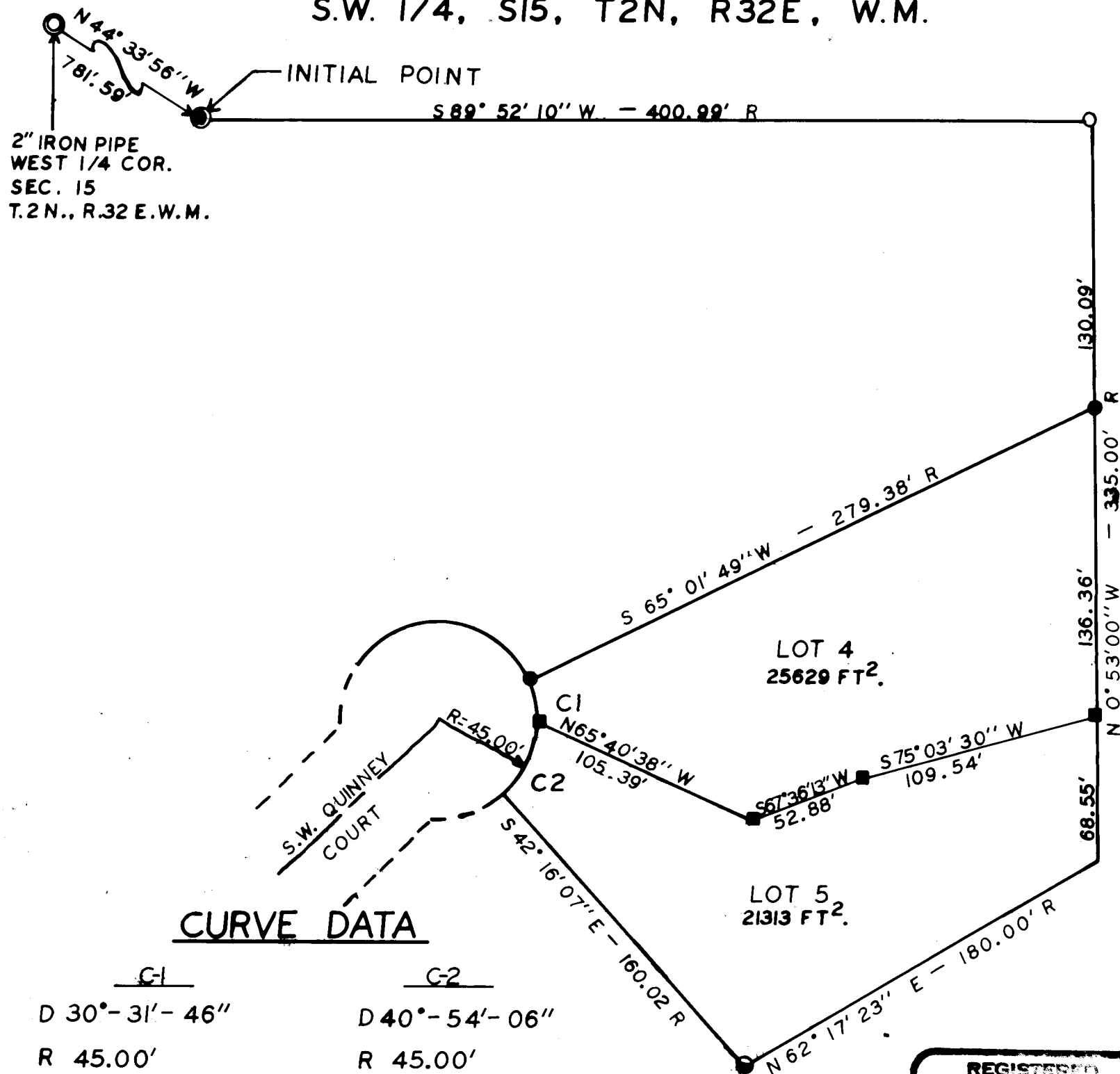


BOUNDARY LINE ADJUSTMENT

LOTS 4 & 5, QUINNEY COURT PLAT
S.W. 1/4, S15, T2N, R32E, W.M.



CURVE DATA

C1	C2
D 30°-31'-46"	D 40°-54'-06"
R 45.00'	R 45.00'
L 23.98'	L 32.12'
C 23 <u>87</u>	C 31 <u>59</u>

NARRATIVE

I LOCATED THE INSTRUMENT POSITION BY DIST.-DIST. INTERSECTIONS FROM FOUR PLAT CORNERS. I THEN TIED THE ANGLE POINTS OF THE NEW LINE USING THE PLATS INITIAL POINT AS THE BACKSIGHT.

INSTRUMENT: TOPCON GTS 2-B

LEGEND

- SET 1/2" IRON ROD W/PLASTIC CAP STAMPED PLS. 346
- FOUND 5/8" IRON ROD W/ MUTILATED PLASTIC CAP
- FOUND 1/2" IRON ROD W/ PLASTIC CAP STAMPED PLS346
- FOUND 2 1/2 BRASS CAP STAMPED PLS. 346
- FOUND 5/8" IRON ROD W/ AL. CAP STAMPED PLS 346

RECEIVED BY

Umatilla County Surveyor

Date 4-97

Rec'd By KK

No. 97-55-A

WAYNE HARRIS CO. INC.

P.O. BOX 566 PENDLETON, OR.

541-276-7642

SURVEY FOR: ROGER SAMPLE
LOCATION: LOT 22, BLOCK 8 OF RICE ADD.
TO CITY OF PENDLETON--QUINNEY COURT

DATE 3/15/97

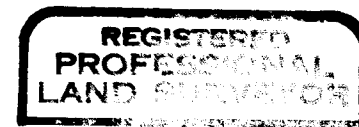
FILE 1785

SCALE 1"=60'

JOB 97-03

DRAWN BY J.F.

DRAWING NO. 97-03A



Wayne O. Harris
OREGON
WAYNE O. HARRIS
#348

Expires 6-30-97

A-55-21