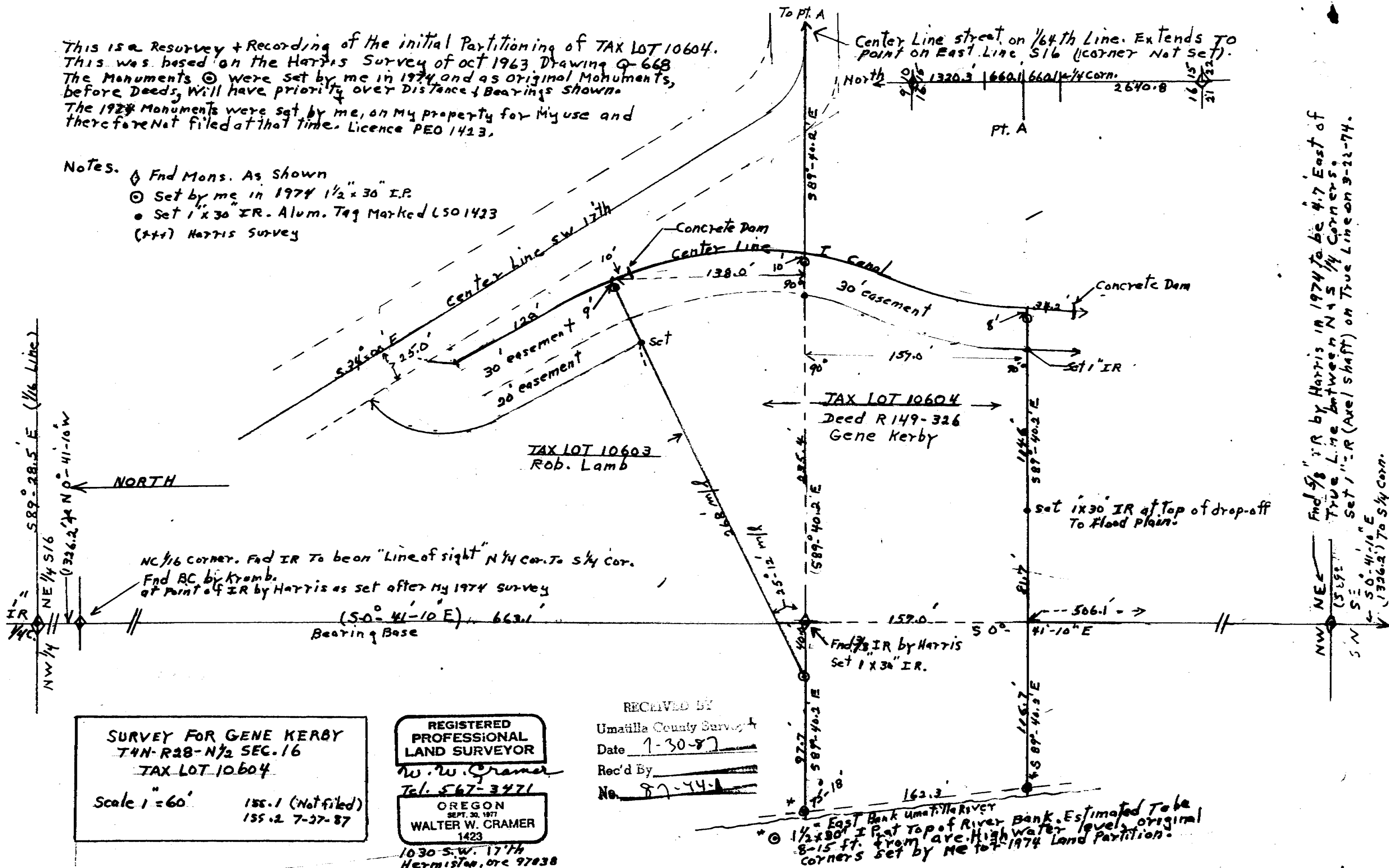


This is a Resurvey + Recording of the initial Partitioning of TAX LOT 10604. This was based on the Harris Survey of Oct 1963 Drawing Q-668. The Monuments \odot were set by me in 1974 and as original Monuments, before Deeds, will have priority over Distances & Bearings shown. The 1924 Monuments were set by me, on my property for my use and therefore not filed at that time. Licence PEO 1423.

- Notes.
- \diamond Fnd Mons. As Shown
 - \odot Set by me in 1974 1/2" x 30" I.P.
 - \bullet Set 1" x 30" IR. Alum. Tag Marked L501423
 - (x+s) Harris Survey



Fnd 5/8" IR by Harris in 1974 to be 4.7 East of True Line between N 1/4 S 1/4 Corners. Set 1" IR (Axe/shaft) on True Line on 3-22-74.

SURVEY FOR GENE KERBY
 T4N-R28-N 1/2 SEC. 16
 TAX LOT 10604
 Scale 1" = 60'
 155.1 (Not filed)
 155.2 7-27-87

REGISTERED PROFESSIONAL LAND SURVEYOR
 W. W. Cramer
 Tel. 567-3471
 OREGON
 SEPT. 30, 1977
 WALTER W. CRAMER
 1423
 1030 S.W. 17th
 Hermiston, OR 97038

RECEIVED BY
 Umatilla County Survey
 Date 1-30-87
 Rec'd By
 No. 87-44-A