

LEGEND

- ⊙ FND. STONE WITH "+", SEE MAP P-53-C
- ⊙ FND. STONE WITH "4" ON N. FACE, SEE MAPS J-124-A AND I-4-B
- ⊙ FND. RAILROAD SPIKE, USED BY STREAMER 1774 & KRUMBEIN 85-149-B
- ⊙ FND. P.K. NAIL IN PAVEMENT, SEE J-117-A & I-3-B
- SET RAILROAD SPIKE IN PAVEMENT, STAMPED LS 934
- SET 1/2" x 30" STEEL REBAR WITH PLASTIC CAP MKD. LS 934
- CALCULATED POINT, NOT FOUND OR SET.
- () BRACKETS DENOTE RECORD DISTANCES

NARRATIVE:

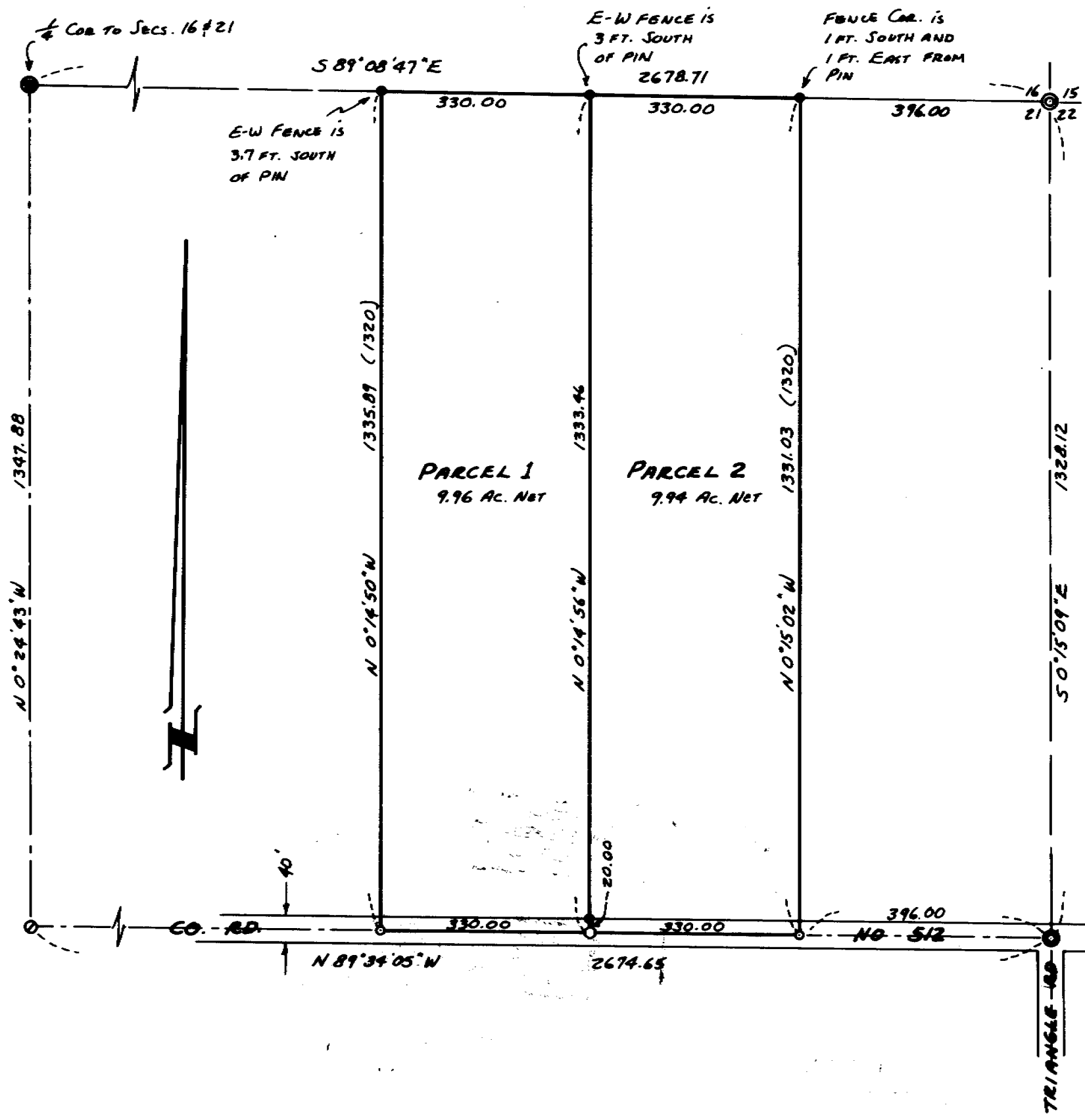
THE PURPOSE OF THIS SURVEY WAS TO DIVIDE INTO TWO PARTS THAT PARCEL OF LAND DESCRIBED IN R.1, Pg. 722, DEED RECORDS OF UMATILLA COUNTY. MY CONTROL POINTS ARE THE FOUR MONUMENTS SHOWN AS FOUND. THE C-N 1/4 COR. OF SEC. 21 IS A NAIL IN THE PAVEMENT AND IS SHOWN BY DWYER, MAP I-3-B, AS BEING ON THE N-S CENTERLINE OF SEC. 21. MY DISTANCE FROM THIS CORNER TO THE N. 1/4 COR. AGREES CLOSELY WITH DWYER'S. I ESTABLISHED THE NE. COR. OF THE PROPERTY SURVEYED AT THE RECORD DISTANCE FROM THE SEC. CORNER. I USED RECORD DISTANCES TO ESTABLISH THE LENGTH OF THE N. LINE AND THE LENGTH OF THE S. LINE OF THE PROPERTY SURVEYED.

BEARINGS ARE TRUE, BASED ON SOLAR OBSERVATION ON MARCH 19, 1986, USING THE LOCAL HOUR ANGLE METHOD.

SURVEY IN NE 1/4 SEC. 21, T6N, R35E, W.M.
 SURVEYED FOR ROBERT & LOUANNE FERGUSON
 SURVEYED BY VICTOR MCLIND, L.S. 934
 MARCH 19, 1986
 SCALE: 1" = 200'

RECEIVED BY
 Umatilla County Surveyor
 Date 5-2-86
 Rec'd By [Signature]
 No. 86-36

REGISTERED
 PROFESSIONAL
 LAND SURVEYOR
Victor M. McLind
 OREGON
 JULY 17, 1970
 VICTOR M. MCLIND
 934



86-36-A