



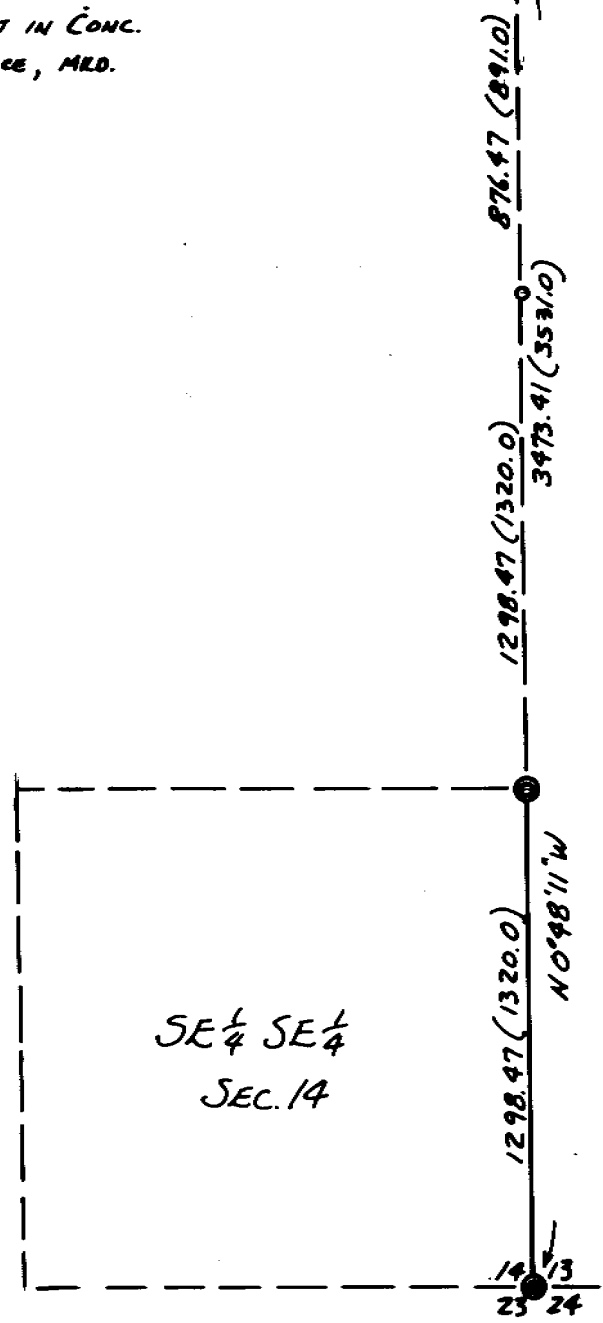
LEGEND

- FND. MY 1/2" STEEL ROD SET OVER STONE WITH "+" AT SEC. CORNER. SEE C.S. FILE # 84-40-A
- ⊙ FND. WALLA WALLA COUNTY MONUMENTS ON STATE LINE AS NOTED.
- POINT OF INTERSECTION OF STATE LINE AND SECTION LINE, FROM WHICH A FOUND 1/2" STEEL ROD BEARS S 0°48'11"W, 0.17 FT.
- ⊙ SET 5/8" STEEL ROD WITH 1 1/2" AL. CAP MKD. LS 934, AT S. 1/8 COR. BETWEEN SECTIONS 13 & 14.
- PROPORTIONED LOCATION OF 1/4 CORNER BETWEEN SECTIONS 13 & 14. (NOT SET)
- () BRACKETS INDICATE RECORD DISTANCES

N 89° 56' 49" W 1540.22 2631.49 1091.27 (1088.3) WASHINGTON OREGON

3" BR. DISC SET IN CONC. 15" BELOW SURFACE, MKD. AS SHOWN.

3" BR. DISC SET IN CONC. 18" BELOW SURFACE, MKD. AS SHOWN.



SE 1/4 SE 1/4
SEC. 14

NARRATIVE:

THE PURPOSE OF THIS SURVEY WAS TO SET THE N.E. CORNER OF S.E. 1/4 OF SE. 1/4 OF SEC. 14. TO CONTROL THE SEC. LINE BETWEEN 13 & 14 I USED THE FOUND STONE AT THE CORNER TO SECS. 13, 14, 23 & 24 AND A FOUND 1/2" STEEL ROD WHICH I FIND TO BE 0.17' SOUTHERLY OF THE STATE LINE, AS CONTROLLED BY FOUND MONUMENTS AS SHOWN. I ALSO FOUND A 1/2" STEEL ROD 1565.33' NORTHERLY OF THE SEC. CORNER AND ANOTHER 1/2" STEEL ROD 2948.99' NORTHERLY OF THE SEC. CORNER. BOTH OF THESE LAST MENTIONED RODS LIE WITHIN 0.03' OF THE SEC. LINE AS ESTABLISHED BY THE ABOVE MENTIONED CONTROL. I ESTABLISHED THE 1/4 COR. AND THE 1/8 COR. BY PROPORTIONMENT OF THE ORIGINAL G.L.O. DISTANCES.

SURVEY FOR TERRY M. WALKER

IN SECTIONS 13 & 14, T6N, R35E, WM. UMATILLA COUNTY, OREGON

SURVEYED BY VICTOR M. McLIND, L.S. 934
NOVEMBER, 1985 SCALE: 1"=500'

BEARINGS ARE BASED ON A SURVEY BY V. MELIND FOR HAL LARSON IN NOV., 1981 IN W. 1/2 SEC. 13, T6N, R35E, C.S. FILE # 82-3-A

REGISTERED PROFESSIONAL LAND SURVEYOR

Victor M. McLind

OREGON JULY 17, 1970 VICTOR M. McLIND 934

RECEIVED BY Umatilla County Surveyor
Date 1-22-86
Rec'd By RA
No. 86-14-A