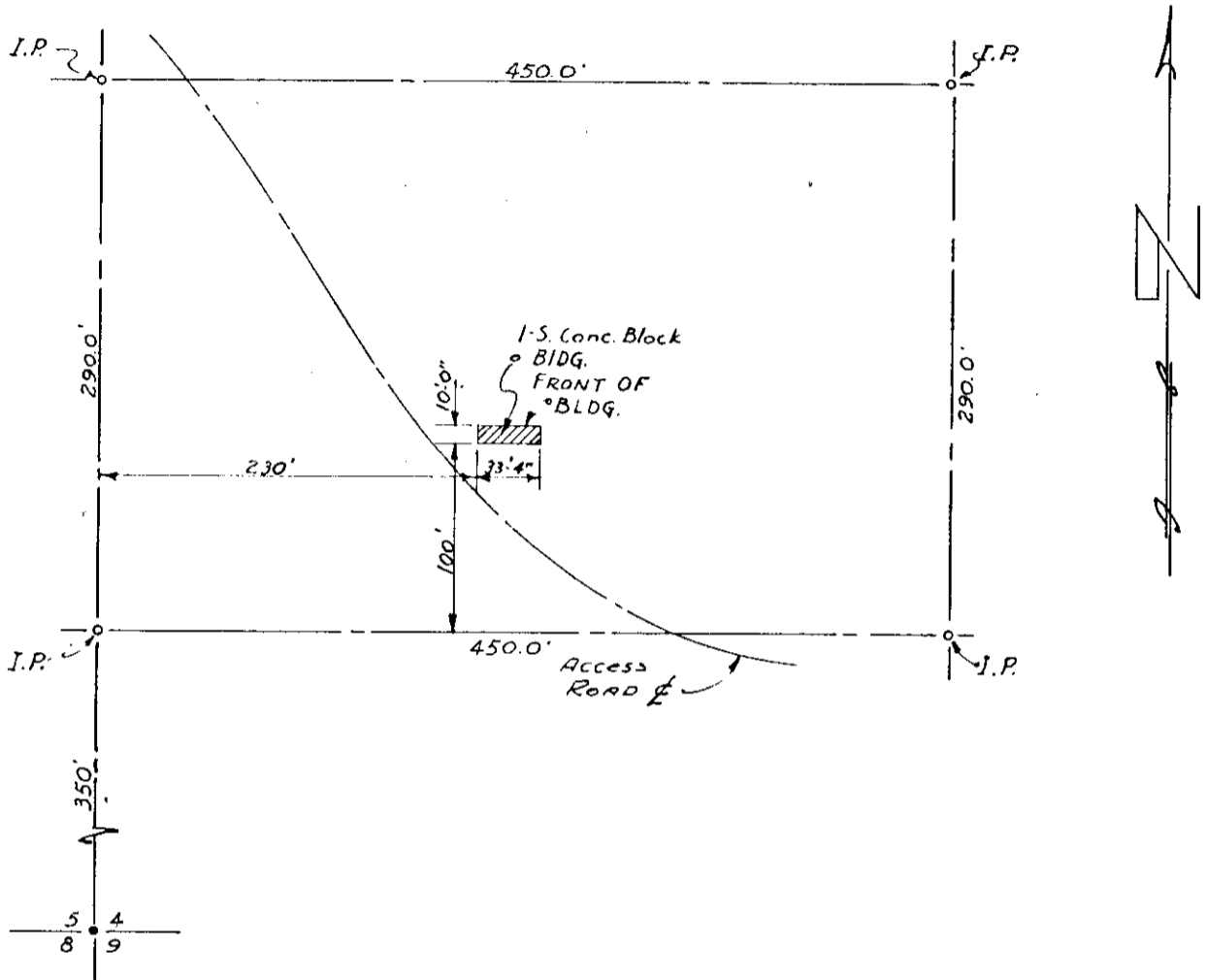


original print

ISSUE 10-56
RE # SHOWN WAS 3
ISSUE -2 4-4-57

1N34
108
16-2



LEASED LAND
LOCAL ASSESS.

P.T. + T. IMPROVEMENTS
CENTRAL ASSESS.

UMATILLA COUNTY
Pendleton R. E. #198
(Formerly Pendleton R.E. #3)

PORTION OF S.W 1/4, SW 1/4, SEC. 4,
T.1N, R.34 E, W.M.

RE # 3-198

THE PACIFIC TEL. & TEL. CO. OFFICE OF CHIEF ENGINEER PORTLAND	DRAWING	AO-359
	SCALE	1"=100'
URBAN MOBILE BLDG. PENDLETON, ORE. PLANT BUILDING SITE PLAN	DRAWN BY	REP
	APPROVED R.C. [Signature]	REP

RECEIVED BY 98.

Umatilla County Surveyor

Date 1985

Rec'd By DC

No. 85-7-A