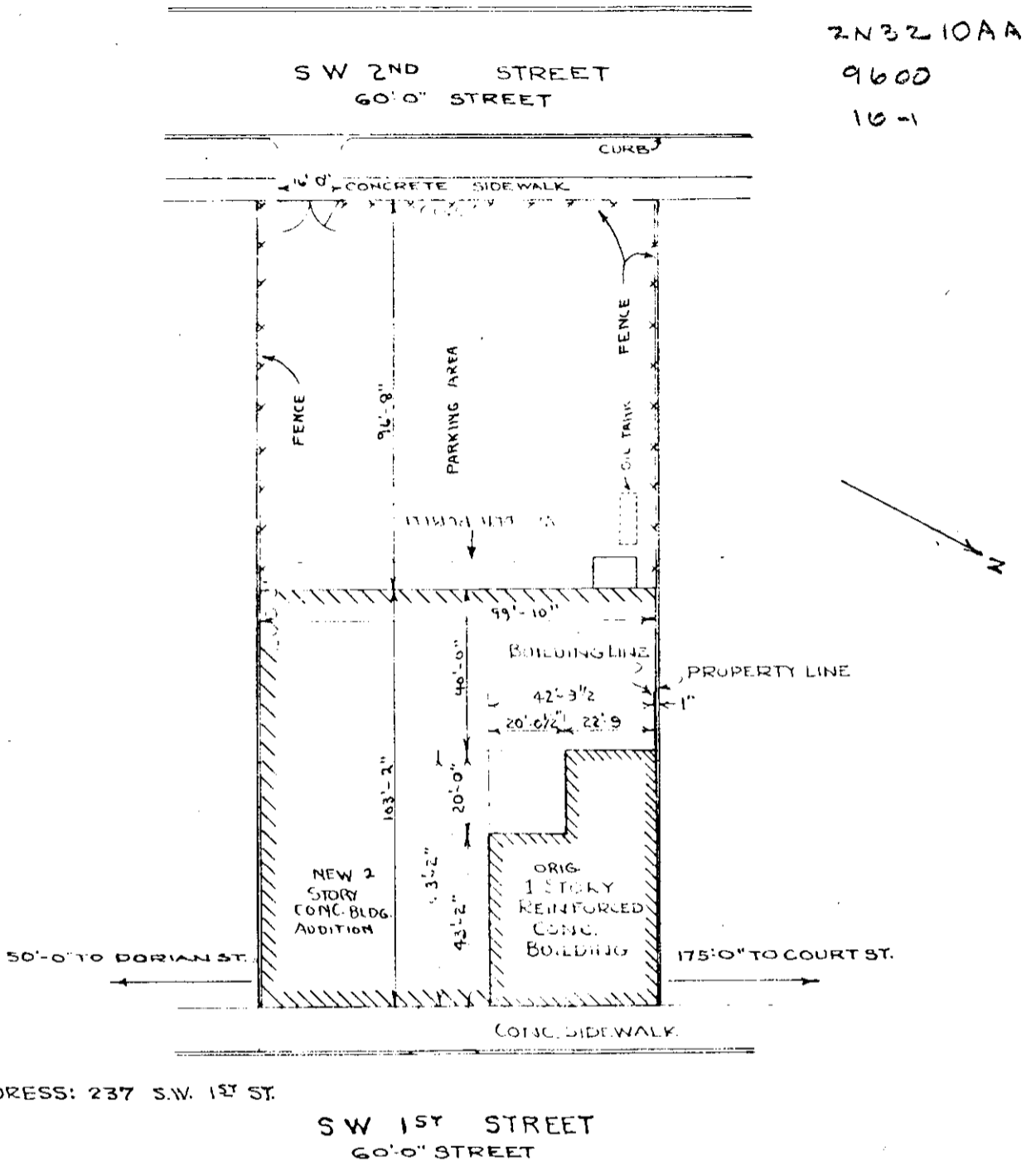


Original print

ISSUE #1 6-14
SW 1ST WAS FORME
GARDEN ST. AND
SW 2ND WAS
WILLOW ST.
BUILDING ADD
ISSUE #2 3-11
ISSUE 2 CANCEL
BUILDING REMOV
ISSUE #3 11-27
BUILDING ADD
TO DRWG.
ISSUE #4 2-11
2 STG
ADDITION
ISSUE #5 2-11
RE # WAS 1
ISSUE-6 4-4



UMATILLA COUNTY
Pendleton R.E. #196
(Formerly
Pendleton R.E. #1)
REAL ESTATE #196
LOTS 5, 8; N 1/2 OF 6 & 7; AND S 1/2 OF 4 & 9 BLOCK-17
ORIGINAL TOWN - CITY OF PENDLETON - OREGON

CENTRAL ASSESS.
1/1/52
ORDER U52-34.

A0-47

THE PACIFIC TEL. & TEL. CO. OFFICE OF CHIEF ENGINEER PORTLAND	DRAWING	A-3081
	SCALE	1" = 40'-0"
MAIN OFFICE - PENDLETON, ORE. PLANT CENTRAL OFFICE SITE PLAN	DRAWN BY	W.W.E. A.B.S.
	APPROVED	E.O. Coffey

RE-196.

RECEIVED BY

Umatilla County Surveyor

Date 1/8/52

Rec'd By W.C.

No. 85-5-A