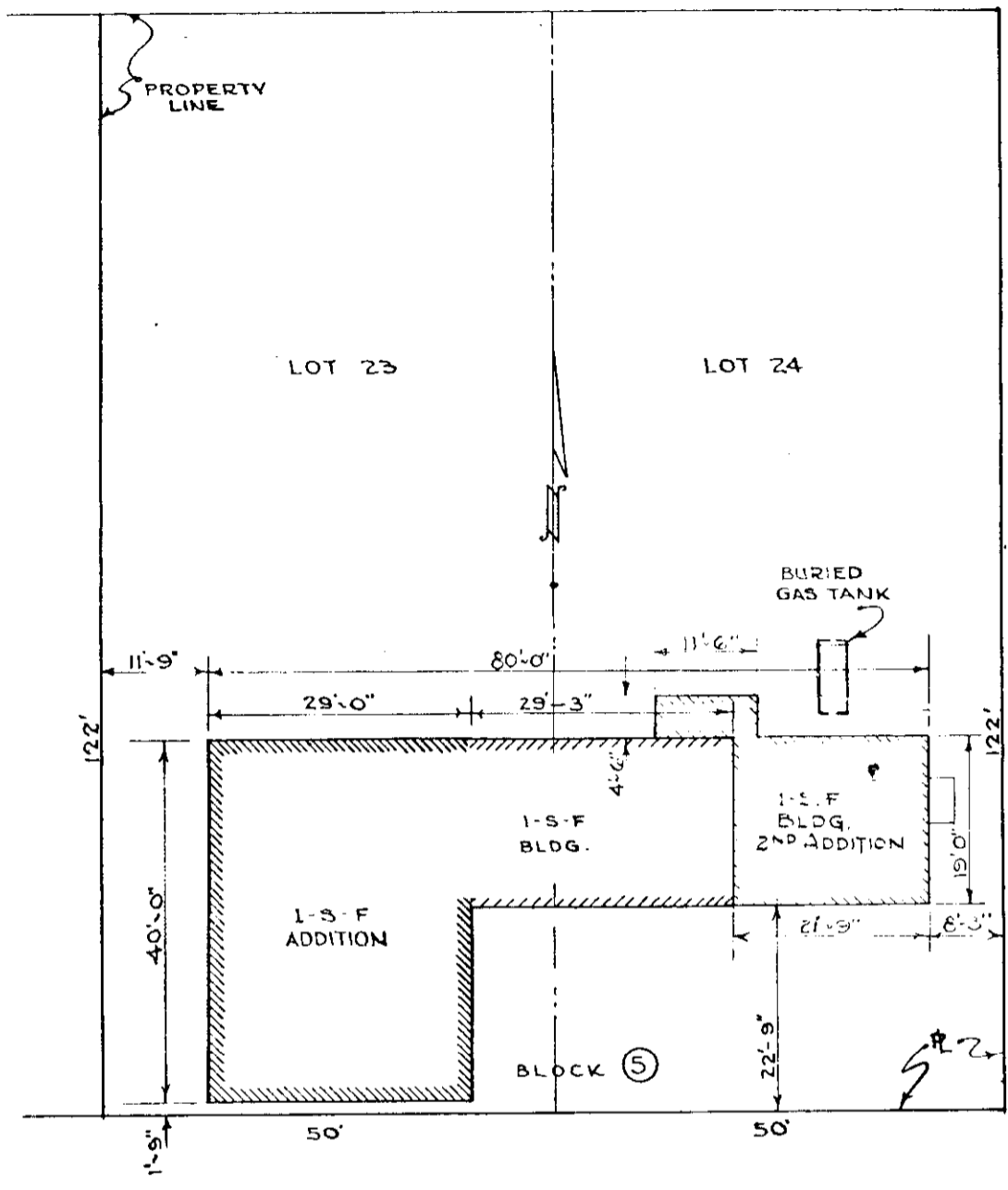


Original print

ISSUE-1 11-4-3
LENGTH OF 2
FEET 100'
ISSUE-2 2-6
ADDITION WAS
NOT SHOWN.
ISSUE-3 11-7-2
2ND ADDITION
ADDED TO DRW
ISSUE-4 6-2
RE # WAS 2
ISSUE-5 4-4

ALLEY

4N2B11CB
9800
8-1



HURLBURT AVE.

UMATILLA COUNTY
Hermiston R.E. #117
(Formerly Hermiston R.E. #2)

LOTS 23 & 24
BLOCK 5
CENTRAL ASSESS.
3/1/40
PARC. 1, ORDER 4-1940

R.E. #2 117

THE PACIFIC TEL. & TEL. CO. OFFICE OF CHIEF ENGINEER PORTLAND	DRAWING	AO-142
	SCALE	1" = 20'
MAIN OFFICE HERMISTON, ORE.	DRAWN BY	Jac
	APPROVED	
SITE PLAN		

RE-117
RECEIVED BY

Umatilla County Surveyor
Date 1/985
Rec'd By bc
No. 85-3-A