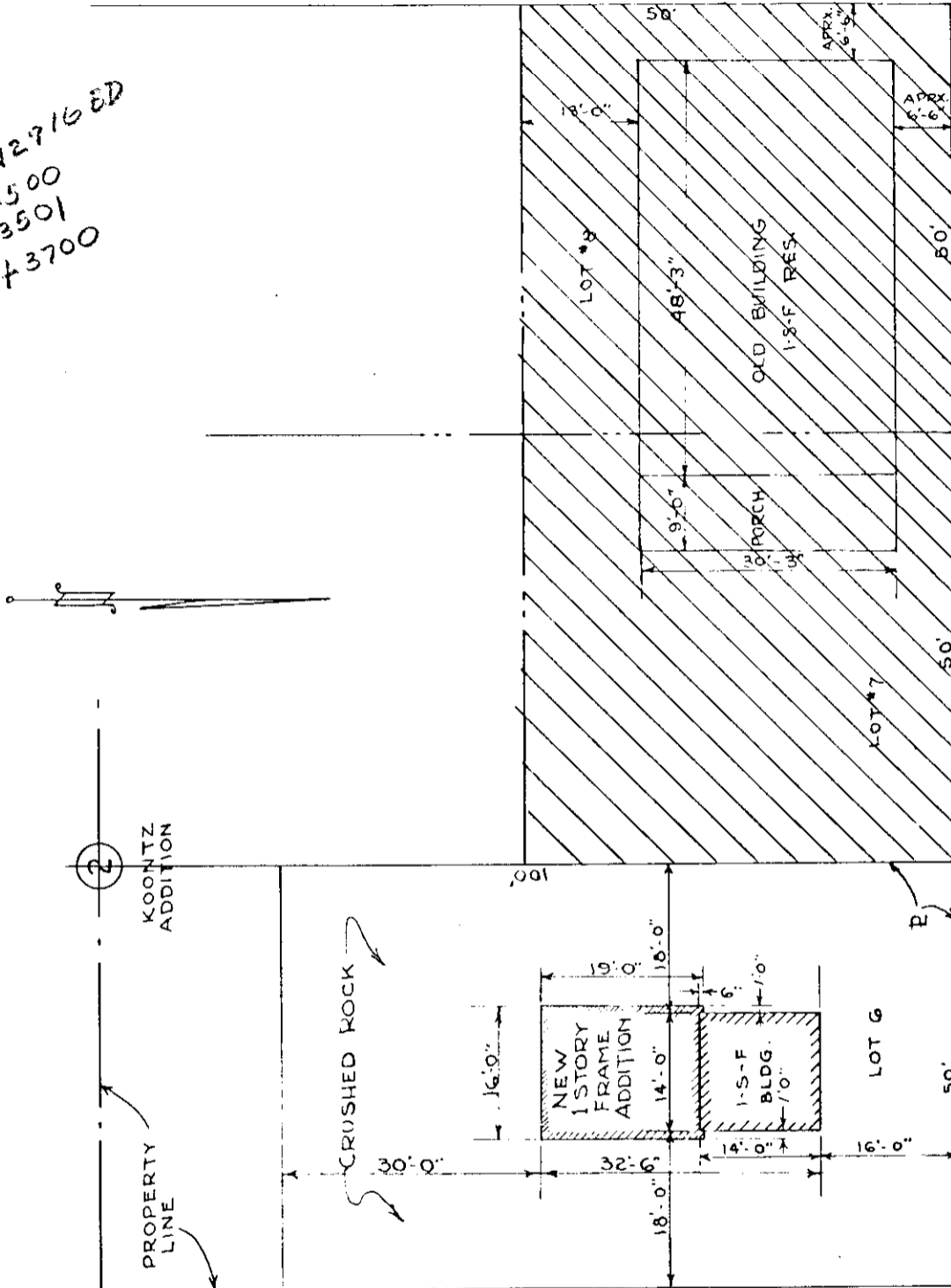


ISSUE-3 11-3-2
 R.E.#1 SOLD 1941
 ISSUE-4 12-1-1941
 BLDG. ADDITION WAS NOT SHOWN
 ISSUE-5 1942-1
 RE # WAS 2
 ISSUE-6 4-4

DUPONT ST.

3N2916 ED
 3500
 3501
 P#3700



SPRAGUE ST.

CENTRAL ASSESS.
 3/1/40
 PARC. 2, ORDER 4-1940

UMATILLA COUNTY
 Echo R.E. # ~~672~~ 672
 (Formerly Echo R.E. #1 & #2)

R.E.#1 N. 1/2 LOTS 7 & 8 BLOCK 2, KOONTZ ADDITION.
 R.E.#2 LOT 6 BLOCK 2 KOONTZ ADDITION TO CITY OF ECHO

REPLACING DRAWING AO-37 ISSUE #2

THE PACIFIC TEL. & TEL. CO. OFFICE OF CHIEF ENGINEER PORTLAND		DRAWING AO-37
MAIN OFFICE ECHO, ORE.		SCALE 1" = 20'
SITE PLAN		DRAWN BY JAC
		APPROVED [Signature]

RECEIVED BY RE-072
 Umatilla County Surveyor
 Date 1985
 Rec'd By bc
 No. 85-2-A