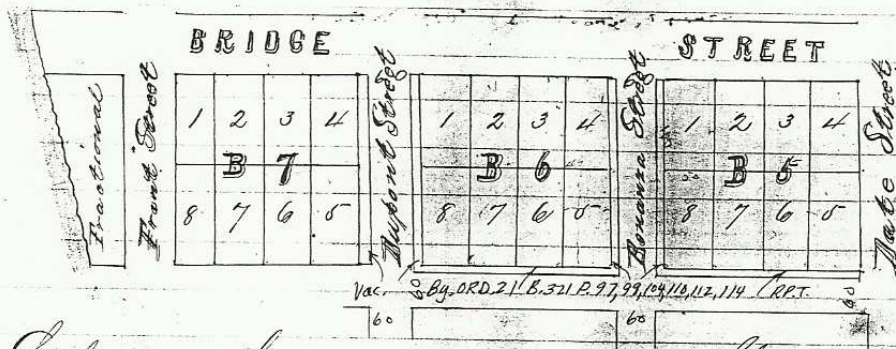


32

W H Crossfield, Addition to the Original
Town of Ely, Situated in Marquette County
Minn.

This addition was formed by continuing
Wate, Bonanza, Dupont and Front Sts. North
a distance of 200 feet from the South line of
Orange Street, thus forming three Blocks, number
ed as shown in the annexed Plot.
Afterwards divided each of these Blocks
into lots of 50 x 100 feet as shown in the Plot.



Lots are the same size, and Streets the same
width and course, as in the original Town.

I hereby certify that the survey of a-
bove addition was made and marked out by
me at the request of W H Crossfield.
Wate this 6th day of October 1881.

J H Poley
Co Surveyor

Filed and Recorded
October 20th 1881.

W Keeney Clk

589 W. R. 15 37122