

APPROVALS:

CITY OF HERMISTON PLANNING COMMISSION
I CERTIFY I HAVE EXAMINED AND APPROVED THIS PLAT ON THIS 26 DAY OF OCTOBER, 2014

Margaret Saylor
CHAIRMAN

HERMISTON CITY COUNCIL
I CERTIFY I HAVE EXAMINED AND APPROVED THIS PLAT ON THIS 26 DAY OF OCTOBER, 2014

[Signature]
MAYOR

HERMISTON IRRIGATION DISTRICT
I CERTIFY I HAVE EXAMINED AND APPROVED THIS PLAT ON THIS 30 DAY OF OCTOBER, 2014

Jersey Bolin
MANAGER

UMATILLA COUNTY SURVEYOR
I CERTIFY I HAVE EXAMINED AND APPROVED THIS PLAT ON THIS 3 DAY OF NOVEMBER, 2014

David Hillman
UMATILLA COUNTY SURVEYOR

UMATILLA COUNTY COMMISSIONERS
APPROVED THIS PLAT ON THIS 17 DAY OF NOVEMBER, 2014

Wilhelm Elfving
CHAIRMAN

George Murdoch
COMMISSIONER

Absent
COMMISSIONER

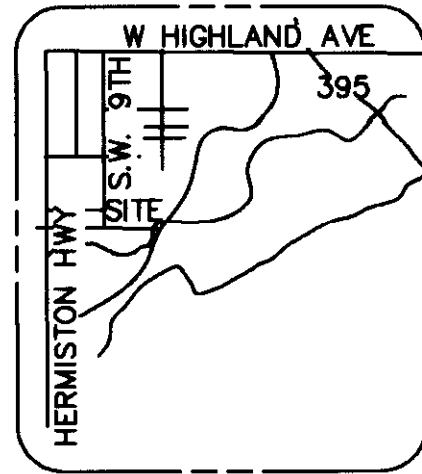
COMMISSIONER

UMATILLA COUNTY ASSESSOR & TAX COLLECTOR
I CERTIFY I HAVE EXAMINED AND APPROVED THIS PLAT ON THIS 13 DAY OF NOVEMBER, 2014

[Signature]
UMATILLA COUNTY ASSESSOR

Bethie Ervick by Kristen Shana d
UMATILLA COUNTY TAX COLLECTOR

STATE OF OREGON, }
COUNTY OF UMATILLA }
I certify that this instrument was received and recorded
ON November 17, 2014
at 4:14 o'clock Pm., in the record of
PLATS of said County.
BOOK PAGE Slide
16 06



VICINITY SKETCH
NOT TO SCALE

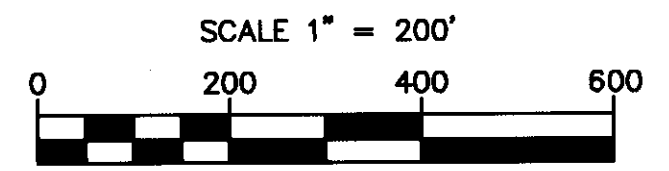
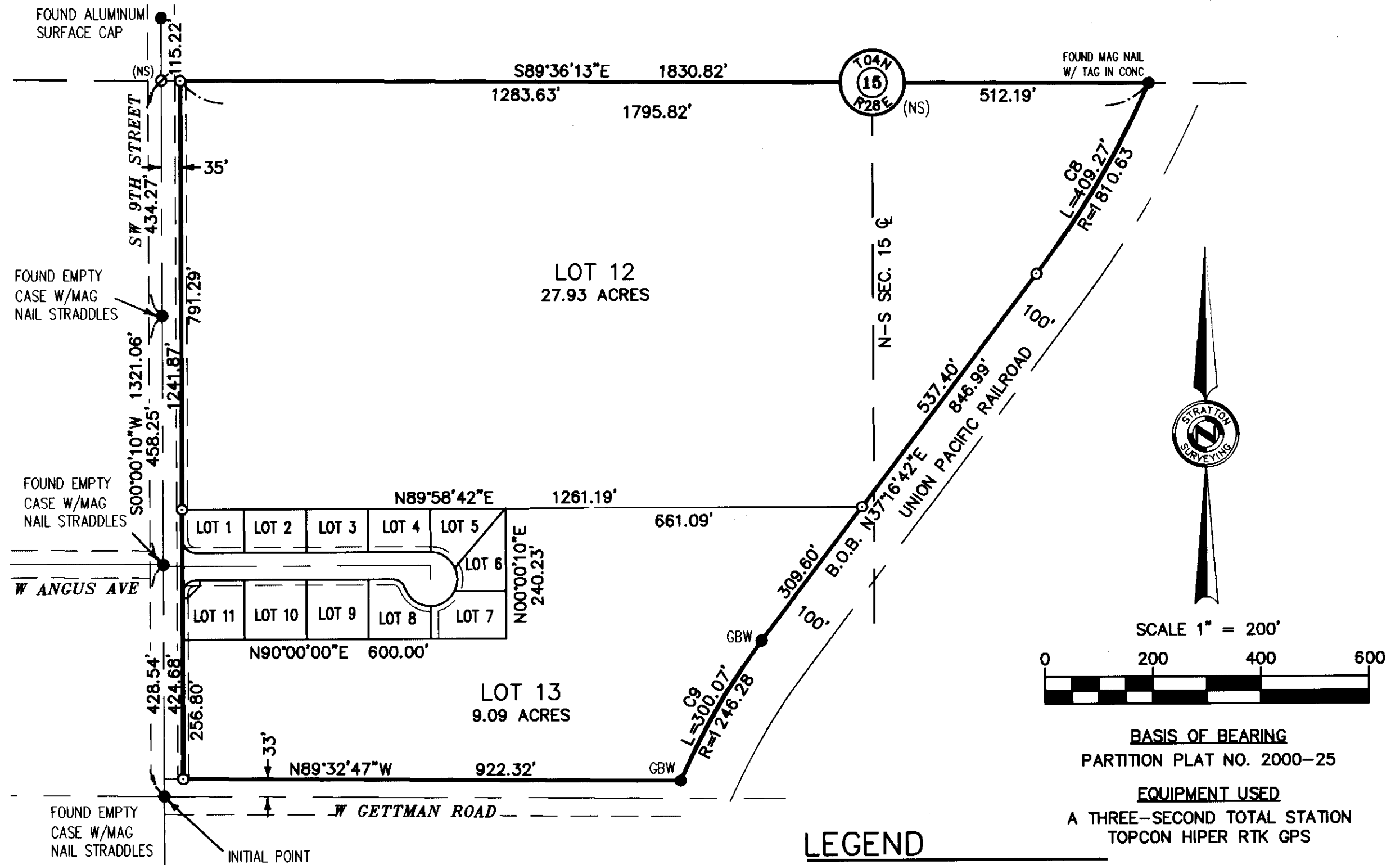
FIELDSTONE CROSSING

A SUBDIVISION OF PARCEL 1 OF PARTITION PLAT NO. 2000-25
N.E. 1/4 OF THE S.W. 1/4 AND THE N.W 1/4 OF THE S.E. 1/4,
OF SEC. 15, T.4N., R.28E., E.M.,
CITY OF HERMISTON, UMATILLA COUNTY, OREGON

DESCRIPTION

PARCEL 1 OF PARTITION PLAT NO. 2000-25, LOCATED IN THE NORTHEAST QUARTER OF THE SOUTHWEST QUARTER AND THE NORTHWEST QUARTER OF THE SOUTHEAST QUARTER OF SECTION 15 OF TOWNSHIP 4 NORTH, RANGE 28, EAST OF THE WILLAMETTE MERIDIAN, UMATILLA COUNTY, OREGON, FILED IN DOCUMENT NO. 2000-3700821 OFFICE OF COUNTY RECORDS.

TOGETHER WITH AND SUBJECT TO EASEMENTS, RESERVATIONS, COVENANTS AND RESTRICTIONS, OF RECORD AND IN VIEW.



SCALE 1" = 200'
BASIS OF BEARING
PARTITION PLAT NO. 2000-25
EQUIPMENT USED
A THREE-SECOND TOTAL STATION
TOPCON HIPER RTK GPS

LEGEND

- = SET 5/8" REBAR W/ ORANGE PLASTIC CAP MARKED "STRATTON AAD 86050"
- NOTE: PLAT CORNERS ARE 30", INTERIOR CORNERS ARE 24"
- = FOUND AS INDICATED
- (NS) ∅ = NOT FOUND OR SET
- GBW ● = FOUND 5/8" REBAR MARKED "GBW" PP#2000-25
- B.O.B. = BASIS OF BEARING
- = PROPERTY BOUNDARY
- - - = CENTERLINE
- - - = EASEMENT

RECEIVED BY
Umatilla County Surveyor
Date: 11/21/14
Recd By: G Hensley
14-144-B

NOTE

I DO CERTIFY THAT THIS IS A TRUE AND EXACT COPY OF THE ORIGINAL.

[Signature]
AARON A DYCK, PLS 86050

NARRATIVE - REFERENCES

THE PURPOSE OF THIS FINAL PLAT IS TO SUBDIVIDE PARCEL 1 OF PARTITION PLAT NUMBER 2000-25.

- PARTITION PLAT 2000-25 DATED MAY 15, 2000
- BY ROGERS SURVEYING INC,
- WARRANTY DEED, DOCUMENT NUMBER 2000-3790289

SURVEYOR'S CERTIFICATE:

I, AARON A DYCK, HEREBY CERTIFY THAT THE PLAT OF "FIELDSTONE CROSSING", AS SHOWN HEREON, IS BASED ON AN ACTUAL FIELD SURVEY OF THE LAND DESCRIBED, AND THAT ALL COURSES AND DISTANCES ARE CORRECTLY SHOWN, AND THAT SAID PLAT IS STAKED WITH PROPER MONUMENTS ON THE GROUND AS INDICATED HEREON.

[Signature]
AARON A. DYCK LS86050

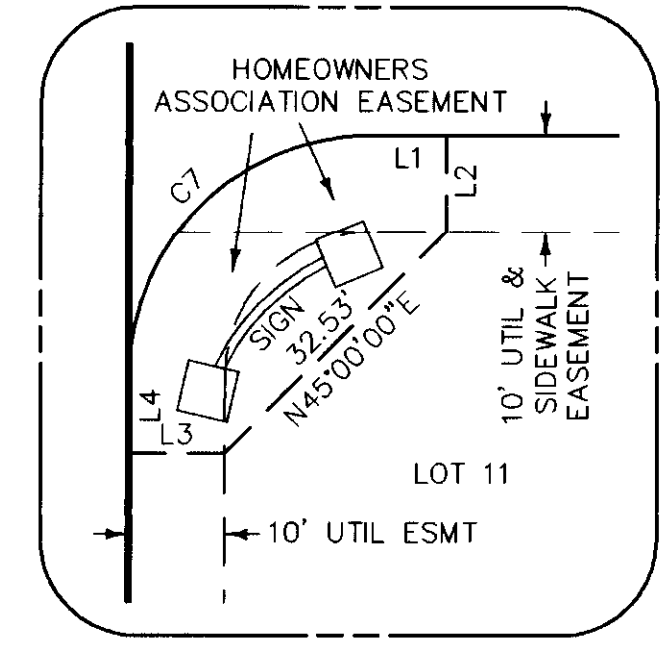
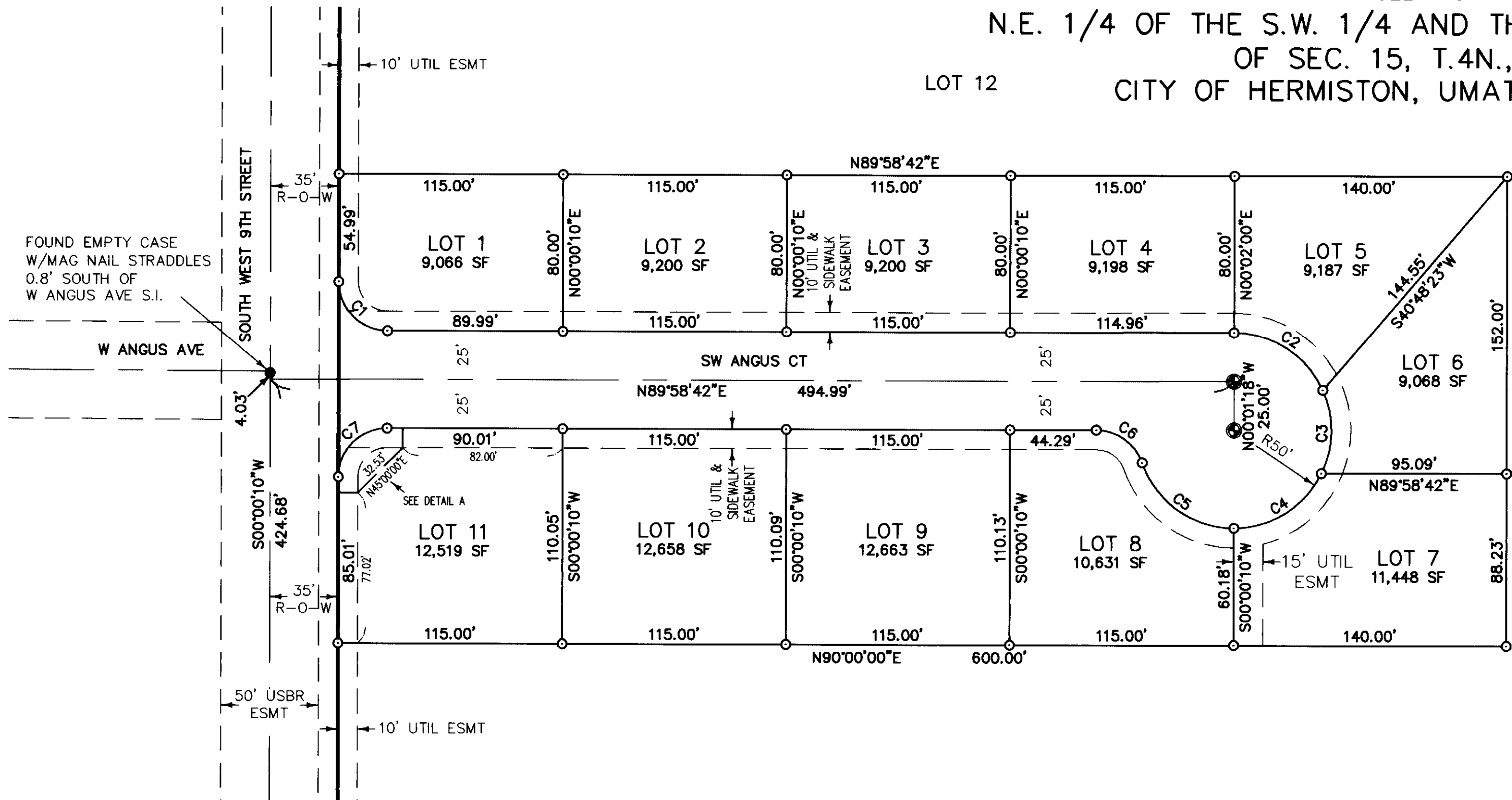
10/13/2014
DATE

REGISTERED PROFESSIONAL LAND SURVEYOR
[Signature]
OREGON
NOVEMBER 13, 2012
AARON A. DYCK
86050
RENEWS: 12/31/2015

| | | | | | | |
|----------|--|-------------------|----|-------------|--|-----|
| PLAT FOR | | INDEX | | | STRATTON SURVEYING & MAPPING, PC 7525 W. DESCHUTES PL. UNIT 1C KENNEWICK, WA 99336 (509) 735-7364 FAX: (509) 735-6560 stratton@strattonsurvey.com | |
| | | 1/4 | 15 | 4 N | | 28E |
| | | DATE: 10/08/14 | | SHT. 1 OF 2 | | |
| | | DRAWN BY: DGM/DCI | | JOB # 4787 | | |

FIELDSTONE CROSSING

A SUBDIVISION OF PARCEL 1 OF PARTITION PLAT NO. 2000-25
 N.E. 1/4 OF THE S.W. 1/4 AND THE N.W 1/4 OF THE S.E. 1/4,
 OF SEC. 15, T.4N., R.28E., E.M.,
 CITY OF HERMISTON, UMATILLA COUNTY, OREGON

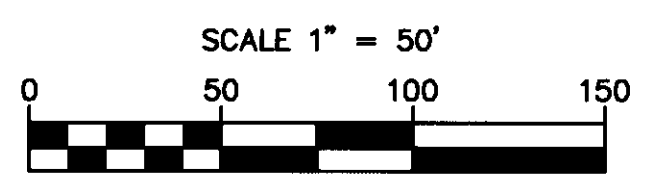


DETAIL A
 SCALE 1"=20'

| LINE TABLE | | |
|------------|--------|-------------|
| LINE | LENGTH | BEARING |
| L1 | 8.01 | N89°58'42"E |
| L2 | 10.00 | N00°01'18"W |
| L3 | 10.00 | N89°59'50"W |
| L4 | 8.00 | S00°00'10"W |

NOTE
 I DO CERTIFY THAT THIS IS A TRUE AND EXACT COPY OF THE ORIGINAL.
 AARON A DYCK, PLS 86050

| CURVE TABLE | | | | | |
|-------------|--------|---------|-----------|---------|-----------------|
| CURVE | LENGTH | RADIUS | DELTA | CHORD | CHORD DIRECTION |
| C1 | 39.28 | 25.00 | 90°01'28" | 35.36' | S45°00'34"E |
| C2 | 57.31 | 50.00 | 65°40'01" | 54.22' | N57°12'45"W |
| C3 | 44.03 | 50.00 | 50°27'25" | 42.62' | N00°50'58"E |
| C4 | 55.79 | 50.00 | 63°55'30" | 52.94' | N58°02'25"E |
| C5 | 61.53 | 50.00 | 70°30'16" | 57.72' | S54°44'42"E |
| C6 | 30.77 | 25.00 | 70°31'44" | 28.87' | N54°45'26"W |
| C7 | 39.26 | 25.00 | 89°58'35" | 35.35' | S44°59'25"W |
| C8 | 409.27 | 1810.63 | 12°57'04" | 408.40' | N30°48'10"E |
| C9 | 300.07 | 1246.28 | 13°47'42" | 299.34' | S30°23'03"W |



SCALE 1" = 50'
 BASIS OF BEARING
 PARTITION PLAT NO. 2000-25
 EQUIPMENT USED
 A THREE-SECOND TOTAL STATION
 TOPCON HIPER RTK GPS

DEDICATION

WE, MEMBERS OF THE HERMISTON SCHOOL DISTRICT 8R, OWNER, OF THE LANDS DESCRIBED HEREON, AND AS SHOWN ON THE ANNEXED MAP, AND HAVE CAUSED THE SAME TO BE SURVEYED AND PLATTED INTO LOTS SHOWN AS SHOWN OR NOTED ON THE PLAT AND TO BE HEREBY DEDICATED AS "FIELDSTONE CROSSING". WE HEREBY DEDICATED ALL STREETS AND EASEMENTS TO THE PUBLIC FOR PUBLIC USE FOREVER.

HERMISTON SCHOOL DISTRICT 8R
 MEMBER: [Signature]
 DATE: 10-20-14

RECEIVED BY
 Umatilla County Surveyor
 Date: 11/21/14
 Rec'd By: G. Nensky
14-144-B

ACKNOWLEDGMENT

STATE OF Oregon
 COUNTY OF Umatilla
 I CERTIFY THAT I KNOW OR HAVE SATISFACTORY EVIDENCE THAT Wade A. Smith, MEMBER OF, HERMISTON SCHOOL DISTRICT, SIGNED THIS FINAL PLAT, ON OATH STATED THAT SHE WAS AUTHORIZED TO EXECUTE THIS AND ACKNOWLEDGED IT AS THE Deputy Superintendent OF Hermiston School District 8R TO BE THE FREE AND VOLUNTARY ACT OF SUCH PARTY FOR THE USES AND PURPOSES MENTIONED ON THIS PARTITION PLAT.

DATE: October 20, 2014
Briana Blithe Cortabertta November 14, 2016
 NOTARY PUBLIC, MY APPOINTMENT EXPIRES
Briana Blithe Cortabertta Commission No. 473427

STATE OF OREGON,
 COUNTY OF UMATILLA }
 I certify that this instrument was received and recorded
 ON November 17, 2014
 at 4:14 o'clock Pm., in the record of
 PLATS of said County.
 BOOK PAGE Slide
 16 06
 OFFICE OF COUNTY RECORDS
 By: ...Steve Churchill...Records Officer
 Fees \$ 78.00 No. 2014-6230216

REGISTERED PROFESSIONAL LAND SURVEYOR
[Signature]
 10/13/2014
 OREGON
 NOVEMBER 13, 2012
 AARON A. DYCK
 86050
 RENEWS: 12/31/2015

PLAT FOR

 4787FP1.DWG © 2014
 DATE: 10/08/14 SHT. 2 OF 2
 DRAWN BY: DGM/DCI JOB # 4787

STRATTON SURVEYING & MAPPING, PC
 7525 W. DESCHUTES PL. UNIT 1C
 KENNEWICK, WA 99336
 (509) 735-7364
 FAX: (509) 735-6560
 stratton@strattonsurvey.com