

McAFEE REPLAT

A REPLAT OF LOTS 39, 40, & 41, "ST JOHN'S ESTATES SUBDIVISION, PHASE 3",
CITY OF HERMISTON, IN SW 1/4, NE 1/4, SEC. 15, T 4 N, R 28 E,
W.M., UMATILLA COUNTY, OREGON

SURVEYOR'S CERTIFICATE & NARRATIVE:

I, G. DENNIS EDWARDS AM A REGISTERED SURVEYOR OF THE STATE OF OREGON, AND HAVE MARKED WITH PROPER MONUMENTS THE LAND SHOWN ON THIS PLAT.
THIS IS A REPLAT OF LOTS 39, 40, AND 41 OF FLOWERS' PLAT OF "ST. JOHN'S ESTATES SUBDIVISION-PHASE III". I FOUND ALL OF HIS MONUMENTS FOR THE BOUNDARY OF THIS PLAT.
I BASED THE BEARINGS AND THIS SURVEY OF SAID FLOWERS' PLAT.
DESCRIPTION: LOTS 39, 40, AND 41 OF ST. JOHN'S ESTATES SUBDIVISION-PHASE III", CITY OF HERMISTON, UMATILLA COUNTY, OREGON.

REGISTERED PROFESSIONAL LAND SURVEYOR
G. Dennis Edwards
OREGON
JULY 16, 1971
G. DENNIS EDWARDS
9 5 1
RENEWS 12/31/2007

LEGEND:

- FOUND 5/8" IRON REBAR FLOWERS, 2004, "ST. JOHN'S ESTATES, PHASE 3"
- FOUND 5/8" IRON REBAR "ST. JOHN'S ESTATES PHASE 1 & PHASE 2"
- SET 5/8"x30" IRON REBAR WITH PLASTIC CAP #951
- (000) OF RECORD, "ST JOHN'S ESTATES, PHASE 3"

12' UTILITY EASEMENT VACATED ON THIS PLAT

OWNER'S DECLARATION:

WE, THE OWNER'S OF THE LAND DESCRIBED ABOVE HEREBY DECLARE THAT WE HAVE CAUSED THIS PLAT TO BE PREPARED.
WE HEREBY ACKNOWLEDGE THE EASEMENTS AS DEDICATED ON THE PLAT OF "ST. JOHN'S ESTATES SUBDIVISION - PHASE III"
WE HAVE NOTIFIED ALL UTILITY COMPANIES AND HAVE PERMISSION TO VACATE THE CROSS HATCHED PORTION OF THE UTILITY EASEMENTS WHICH RUN ALONG THE NORTH AND SOUTH LINES OF LOT 40. WE HEREBY VACATE SAID EASEMENT.
Albert L. McAfee
ALBERT L. McAFEE
PRESIDENT, ALBERT L. McAFEE INVESTMENTS, INC.
Heleen D. McAfee
HELEN D. McAFEE
SECRETARY, ALBERT L. McAFEE INVESTMENTS, INC.

APPROVALS:

UMATILLA COUNTY SURVEYOR
APPROVED THIS 22 DAY OF February, 2006.
David H. Klein
UMATILLA COUNTY SURVEYOR

CITY OF HERMISTON PLANNING COMMISSION
APPROVED THIS 13 DAY OF February, 2006.
Margaret Sawyer
CHAIRMAN

HERMISTON IRRIGATION DISTRICT
APPROVED THIS 17 DAY OF Feb, 2006.
Robert Wilcox
MANAGER

UMATILLA COUNTY COMMISSIONERS
APPROVED THIS 24 DAY OF February, 2006.
Jennifer Schultz
CHAIRMAN
William S. Hamall *Emile M. Holman*
COMMISSIONER COMMISSIONER

HERMISTON CITY COUNCIL
APPROVED THIS 13 DAY OF Feb, 2006.
Rob Swenson
MAYOR

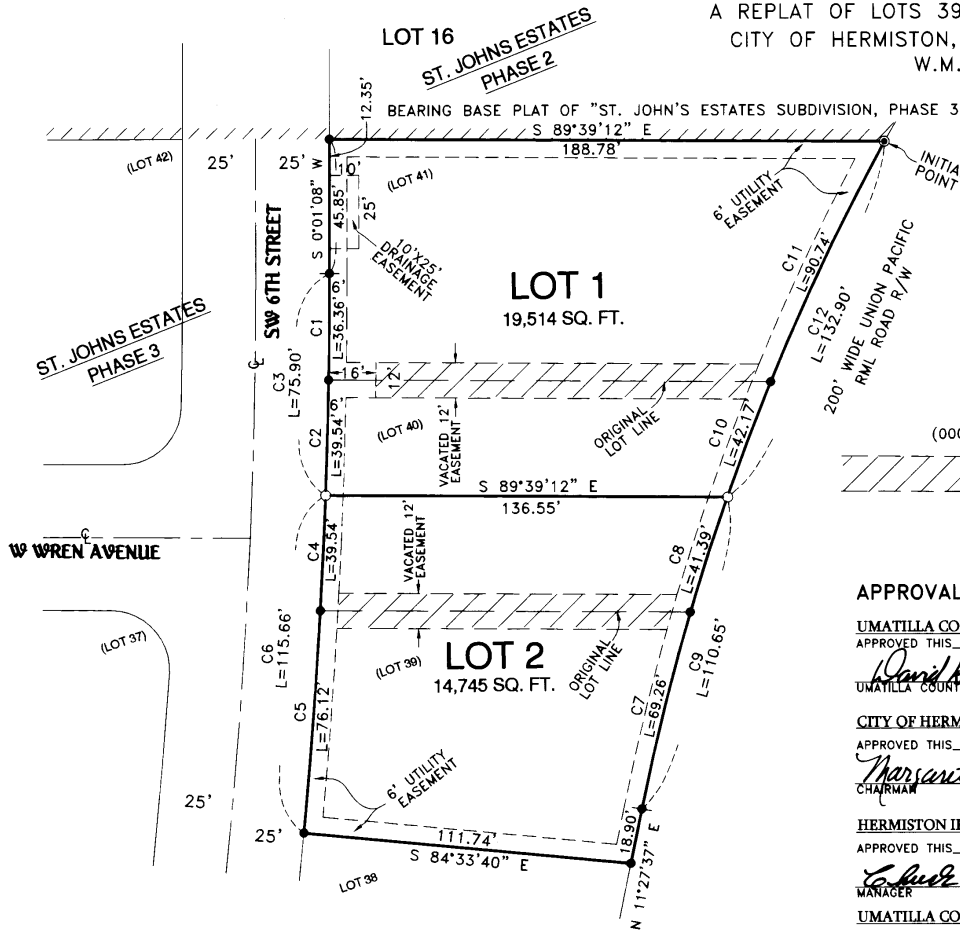
UMATILLA COUNTY ASSESSOR & TAX COLLECTOR

TAXES ARE PAID IN FULL
APPROVED THIS 22 DAY OF Feb, 2006.
Rhonda J. Schultz by Margie Sullivan
UMATILLA COUNTY ASSESSOR UMATILLA COUNTY TAX COLLECTOR

STATE OF OREGON, COUNTY OF UMATILLA }
I certify that this instrument was received and recorded
ON February 27, 2006
at 9:00 o'clock Am, in the record of PLATS of said County.
BOOK PAGE Slide
15 3
OFFICE OF COUNTY RECORDS
By: JEAN HEMPHILL, Records Officer
Fees \$ 50.00 No. 2006-4960629

THIS IS AN EXACT COPY:

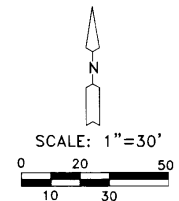
G. Dennis Edwards
G. DENNIS EDWARDS



CURVE TABLE

#	DELTA	RADIUS	ARC	CHORD
C1	1°01'44"	2025.00'	36.36'	S 0°32'00" W 36.36'
C2	1°07'08"	2025.00'	39.54'	S 1°36'08" W 39.54'
C3	2°08'51"	2025.00'	75.90'	S 1°05'25" W 75.90'
C4	1°07'07"	2025.00'	39.54'	S 2°43'50" W 39.53'
C5	2°09'14"	2025.00'	76.12'	S 4°21'43" W 76.12'
C6	3°16'21"	2025.00'	115.66'	S 3°48'16" W 115.64'
C7	4°50'48"	818.73'	69.26'	N 13°52'44" E 69.24'
C8	2°53'47"	818.73'	41.39'	N 17°45'17" E 41.39'
C9	7°44'36"	818.73'	110.65'	N 15°19'43" E 110.56'
C10	2°57'03"	818.73'	42.17'	N 20°40'46" E 42.16'
C11	6°20'59"	818.73'	90.74'	N 25°19'46" E 90.69'
C12	9°18'03"	818.73'	132.90'	N 23°51'15" E 132.76'

STATE OF OREGON }
COUNTY OF UMATILLA }
SUBSCRIBED, AND SWORN BEFORE ME ON THIS 16 DAY OF February, 2006
Debra A. Doyle
NOTARY PUBLIC FOR OREGON
PRINTED NAME Debra A. Doyle
COMMISSION NO. 360049
MY COMMISSION EXPIRES Aug. 5, 2006



JOB# S0507120
EDWARDS SURVEYING P.O. BOX 763
541-567-3336 HERMISTON, OREGON 97838
DRAWN BY NJF/JMC

RECEIVED BY
Umatilla County Surveyor
2-06
KK
06-33-B