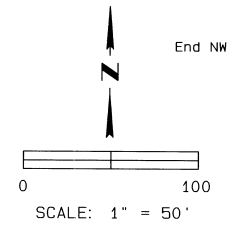


Four Monuments are N0°01'18"E (perpendicular) to line between SW1/16 corner and CS1/16 corner by distance indicated.
 SW 1/16 Cor. Sec. 3 2.87 2.93 2.62 0.79 0.52
 Detail: Location of monuments along 1/16 line. Distances are between perpendicular intersects. 5.92 14.44 pin bent 589°58'42"E, 725.94
 Monuments is S0°01'18"W (perpendicular) to line between SW1/16 corner and CS1/16 corner by distance indicated.
 N89°58'42"E, 611.13
 N0°01'18"E, 8.40
 CS 1/16 Cor. Sec. 3
 N89°35'11"E, 611.35 (R5)
 S89°58'42"E, 611.35
 N1°27'36"W, 8.40
 N01°58'30"W, 8.22 (R4)
 CS 1/16 Cor. Sec. 3

SW 1/16 Cor. Sec. 3 WEST HILLS ADDITION

S89°14'51"W, 202.99
 S89°40'W, 203.37 (R2)
 S89°58'42"E, 222.65'
 3/4" iron pipe, Brown Courts Addition (R2) tied in previous survey. Destroyed by construction in summer 1998.
 S89°39'02"E, 104.40
 N89°39'02"E, 104.40 (R1)
 N89°31'30"W, 86.67 (R4)
 S89°48'02"W, 65.56
 N89°35'11"E, 1337.07 (R5)
 N89°58'42"E, 1337.07
 S89°58'42"W, 503.08
 S89°56'03"W, 370.13
 N89°59'02"E, 370.06 (R1)
 N1°27'36"W, 8.40
 N01°58'30"W, 8.22 (R4)



- LEGEND**
- Found Concrete Monument with Brass Pin - from Brown Courts Addition
 - Found 5/8" Iron Pin - Source Noted
 - Found 3/4" Iron Pipe - Source Noted
 - Found Railroad Spike - City of Pendleton Control Survey - NW Carden R/W
 - Found PK Nail - City of Pendleton Control Survey - NW Carden R/W
 - Computed Point
 - Set 5/8 by 24" iron rebar with red plastic cap stamped ORLS 0852 and WALS 13922.
 - Set 5/8 by 30" iron rebar with red plastic cap stamped ORLS 0852 and WALS 13922.

BASIS OF BEARING
 The bearings shown on this drawing are based on the record bearing for the centerline of NW 12th Street from the 1915 Plat for Irvington Heights Addition to the City of Pendleton, Oregon (R1). The bearing was taken as the line between the railroad spike at the intersection of 12th and Horn and the easterly PK nail at the intersection of 12th and Despain.

EILEEN MARSHALL
 REPLAT

REPLAT OF LOTS 19 THROUGH 26 OF IRVINGTON HEIGHTS ADDITION TO THE CITY OF PENDLETON, OR. SE1/4 OF SW1/4, Section 3, T. 2 N., R. 32 E., W. M.

RECORD SURVEYS

- R1 Irvington Heights Plat - Rutherford - 1915
 - R2 Brown Courts Plat - ? - 1948
 - R3 Q-186-B - Hayes - 1955
 - R4 R-112-B - Krumbein - 1980
 - R5 Control Survey NW Carden RW - Bordenkircher - 1985
 - R6 94-40-B - Wells - 1994
- Field survey was completed April 18, 2000. Lot closure calculations were made on City of Pendleton Coordinate System and closure reports submitted to the County Surveyor with this plat.
 Monuments were set December 20, 2000.

OFFICE OF COUNTY RECORDS

David L. Haddock
 This is a true and exact copy.

REGISTERED PROFESSIONAL LAND SURVEYOR

David L. Haddock

OREGON
 JULY 12, 1968
 DAVID L. HADDOCK
 582
 RENEWS 6.30.01

Monuments Set:
 February 28, 2001.

STATE OF OREGON,)
 COUNTY OF UMATILLA)
 I certify that this instrument was received and recorded
 ON April 18, 2001
 at 9:45 o'clock Am., in the record of
 PLATS of said County.
 BOOK PAGE Slide
 14 24

OFFICE OF COUNTY RECORDS

By: GEORGIA DUNAWAY Records Officer
 Fees \$ 50.00 No. 2001-3870057

SURVEY FOR
 Mr. GALE MARSHALL
 3540 N. E. King Place
 Pendleton, OR 97801

David L. Haddock, Surveyor and Engineer
 P. O. Box 1574
 Pendleton, Oregon 97801
 (541) 276-2174

HADDOCK SURVEYING
 GPS
 AND
 TOTAL STATION

CURVE TABLE FOR LOT LINES

CURVE No.	ARC	DELTA	RADIUS	CHORD	BEARING
C1	50.15	7°45'59"	370.00	50.11	N87°34'36"W
C2	50.32	11°08'27"	258.77	50.24	N85°53'22"W
C3	59.85	9°16'04"	370.00	59.78	N79°03'35"W
C4	35.35	7°49'38"	258.77	35.32	N76°24'20"W
C5	66.99	10°22'23"	370.00	66.89	N69°14'21"W
C6	42.17	9°20'14"	258.77	42.12	N67°49'24"W
C7	60.04	9°17'35"	370.00	59.74	N50°12'24"W
C8	47.32	10°28'39"	258.77	45.81	N47°36'58"W
C9	58.80	9°05'21"	258.77	47.25	N57°54'58"W
C10	45.87	10°09'22"	258.77	45.81	N47°36'58"W
C11	57.70	8°56'07"	370.00	57.64	N41°11'10"W
C12	40.89	9°03'15"	258.77	40.85	N37°59'38"W
C13	21.00	3°15'07"	370.00	21.00	N35°05'33"W

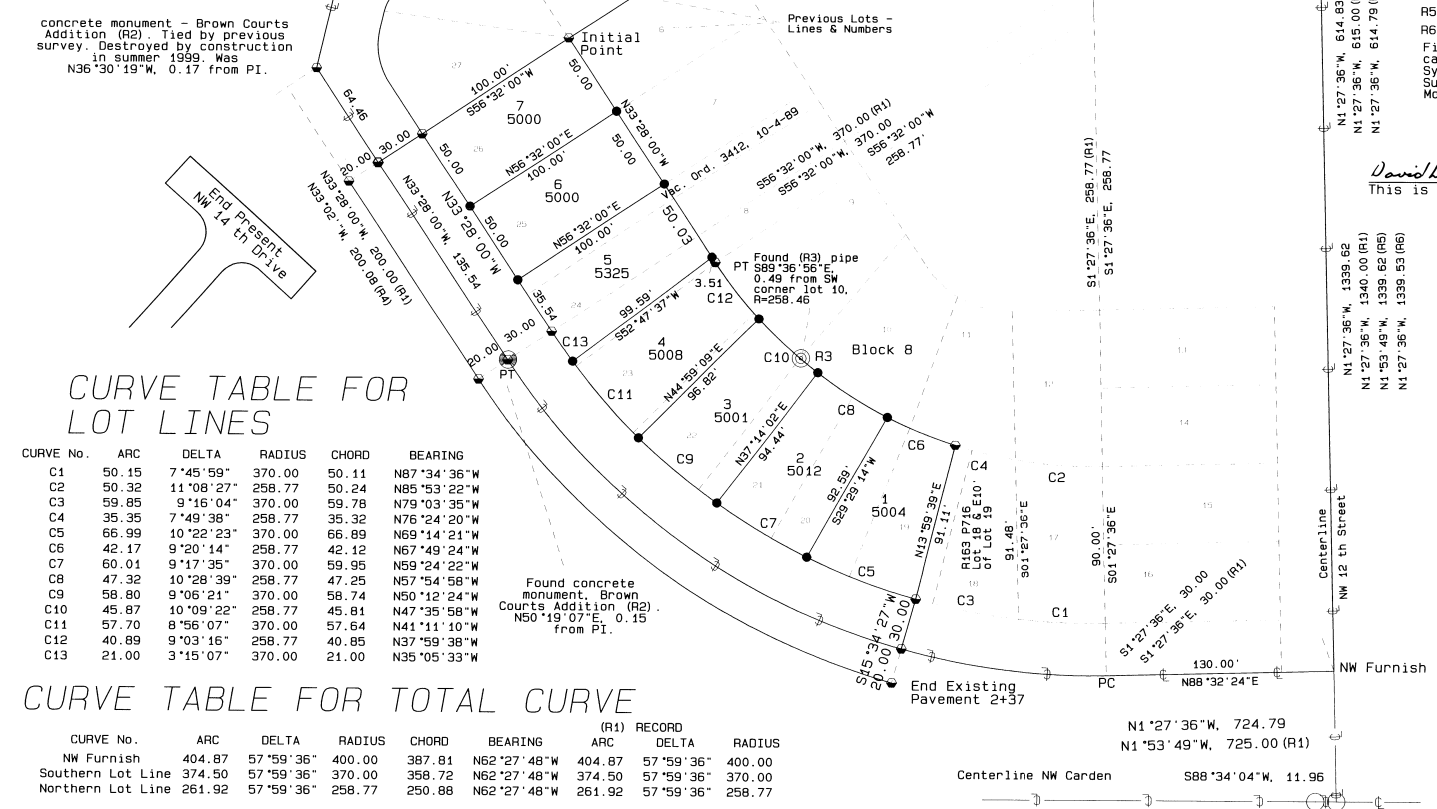
CURVE TABLE FOR TOTAL CURVE

CURVE No.	ARC	DELTA	RADIUS	CHORD	BEARING	(R1) RECORD ARC	DELTA	RADIUS
NW Furnish	404.87	57°59'36"	400.00	387.81	N62°27'48"W	404.87	57°59'36"	400.00
Southern Lot Line	374.50	57°59'36"	370.00	358.72	N62°27'48"W	374.50	57°59'36"	370.00
Northern Lot Line	261.92	57°59'36"	258.77	250.88	N62°27'48"W	261.92	57°59'36"	258.77

Found concrete monument, Brown Courts Addition (R2). N50°19'07"E, 0.15 from PI.

concrete monument - Brown Courts Addition (R2). Tied by previous survey. Destroyed by construction in summer 1999. Was N36°30'19"W, 0.17 from PI.

Found (R3) pipe PT S89°36'56"E, 0.49 from SW corner lot 10, R=258.46



EILEEN MARSHALL REPLAT

SHEET 2 OF 2

OWNERS DECLARATION

KNOW ALL MEN BY THESE PRESENTS:

That the undersigned owner of the land shown on the accompanying plat does hereby establish and acknowledge that accompanying plat as the official map and replat of Lots 20 through 28 and a portion of Lot 19, all in Block 8 of Irvington Heights Addition to the City of Pendleton, Oregon in Umatilla County.

H. Gale Marshall
H. Gale Marshall

Anita E. Marshall
Anita E. Marshall

REPLAT OF LOTS 19 THROUGH 26, IRVINGTON HEIGHTS
ADDITION to THE CITY OF PENDLETON, OREGON.
SE 1/4 OF SW 1/4, Sec. 3, T1N, R32E, W.M.

APPROVALS CITY OF PENDLETON

The accompanying Plat is hereby approved
this 9th day of April, 2001.

Reimund Aladin
CITY OF PENDLETON PLANNING DIRECTOR

Dated this 9th day of April, 2001.

Samuel L. Cole
City of Pendleton Surveyor

UMATILLA COUNTY

The accompanying plat is hereby approved
Dated this 16th day of April, 2001.

David H. Klein
Umatilla County Surveyor

Approved for recording in the "Record of Town Plats"

This 18th day of April, 2001.

Annis S. Robertson
CHAIRMAN
Emile M. Holman
COMMISSIONER
William S. Hamall
COMMISSIONER

We, the Assessor and the Tax Collector of Umatilla County, Oregon, do hereby certify that we have examined the tax records relative to the land covered by the accompanying replat and that all monies due for the State and County taxes and assessments that could constitute a lien on said land have been paid and we hereby approve said replat.

Dated this 16th day of April, 2001.

Samuel L. Cole
UMATILLA COUNTY ASSESSOR
Randa J. Schult
UMATILLA COUNTY TAX COLLECTOR

On this 6th Day of April, 2001, the above named individuals appeared personally before me and are known to me to be the identical individuals who executed the plat dedication and acknowledged that they did so freely and voluntarily.

Before me: Randa M. Anderson
Notary Public for Oregon



My commission expires: 4/12/02

NARRATIVE

This survey was performed at the request of Mr. Gale Marshall. The purpose of the survey was to replat Lots 19 through 26 of Block 8 of the IRVINGTON HEIGHTS ADDITION to the City of Pendleton in Umatilla County, Oregon. The replat increases lot sizes to 5000 square feet or larger. The boundaries were established based on found City of Pendleton monuments at the SW 1/16 and CS 1/16 of Section 3, at the intersection of NW 12th Street with NW Despain Street, and NW Horn Street. The distance along NW 12th Street was proportioned to produce coordinates for its intersection with NW Furnish Street. Two concrete monuments with brass rod markers from the Brown Courts Addition to the City of Pendleton were found and surveyed. These monuments were at the intersection of NW 14th and NW Furnish Streets and the end of NW 14th. NW 14th and NW Furnish Street.

The lot and street locations for Irvington Heights Addition were computed starting at the intersection of NW 12th Street and NW Furnish Street based on the record from the original plat.

The computed locations were found to be in reasonable agreement with the found City and BROWN COURTS ADDITION monuments. Deed Reel 163, Page 716 was used to establish the boundary between Lot 18 and Lots 19 through 26. The replatting resulted in one less lot than the original plat.

The record plats for Irvington Heights Addition to the City of Pendleton (1915) and Brown Courts Addition to the City of Pendleton were used along with Umatilla County Record Surveys Q-186-B, R-112-B and 94-40-B. An unrecorded 1985 survey by the City of Pendleton Engineering Department was also used. This survey set control monuments for NW Carden based on the monuments used for my survey.

DESCRIPTION

A part of the Irvington Heights Addition to the City of Pendleton in Umatilla County, Oregon, located int the SE 1/4 of the SW 1/4, Sec. 3, T1N, R32E, W.M.: further described as the following part of Block 8 of said Addition; Lots 20 through 26 and Lot 19 except the easterly 10 feet of said Lot 19 which was separated by a deed on file in the Umatilla County records on Page 716 of Reel 163.

REGISTERED
PROFESSIONAL
LAND SURVEYOR

David L. Haddock

OREGON
JULY 12, 1886
DAVID L. HADDOCK
882

RENEWS 6.30.01

David L. Haddock
This is a true and exact copy.

SURVEY FOR
Mr. GALE MARSHALL
3540 N. E. King Place
Pendleton, OR 97801

OFFICE OF COUNTY RECORDS

STATE OF OREGON, }
COUNTY OF UMATILLA }
I certify that this instrument was received and recorded

ON April 18, 2001
at 9:45 o'clock Am., in the record of
PLATS of said County.
BOOK PAGE Slide
14 24

OFFICE OF COUNTY RECORDS

By: GEORGIA DUNAWAY Records Officer

Fees \$ 50.00 No. 2001-3870057

David L. Haddock, Surveyor and Engineer
P.O. Box 1574
Pendleton, Oregon 97801
(541) 276-2174

HADDOCK SURVEYING

GPS

AND

TOTAL STATION