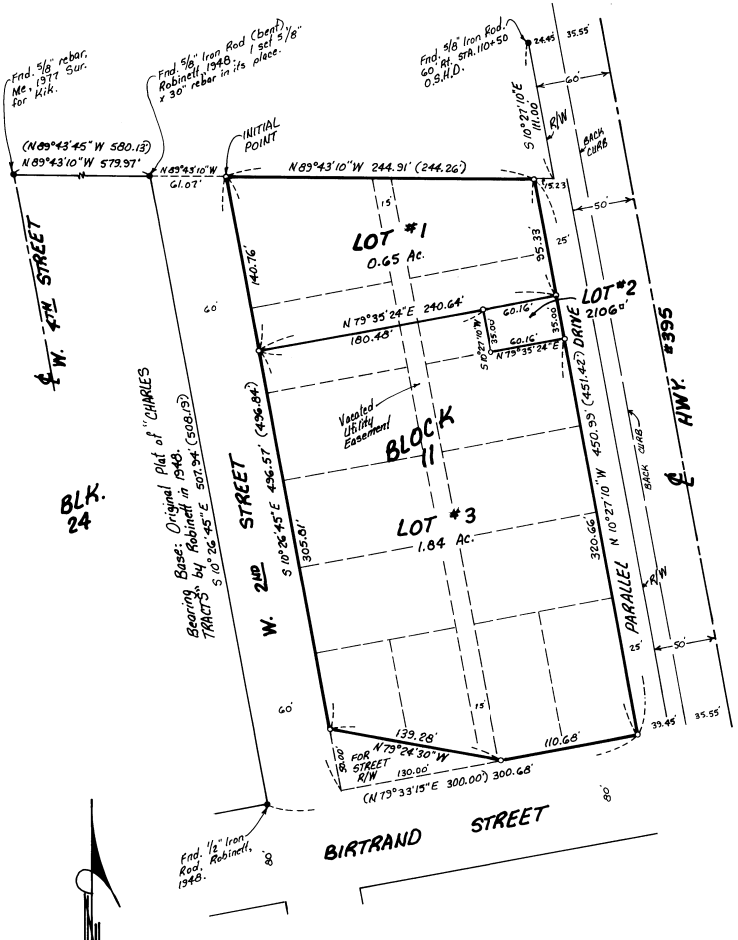


Prepared By:
 Edwards Surveying P.O. Box 763
 541-567-3336 Hermiston, OR. 97838
 Drawn By: S.H.B.

REPLAT OF BLOCK II, FIRST AMENDED AND SUPPLEMENTAL PLAT OF "CHARLES TRACTS,"

In the NW 1/4 of Section 27, T5N, R28E, W.M.,
 Umatilla County, Oregon



BLK. 24

Original Plat of "CHARLES TRACTS" by Robinnett in 1948. S 10 26' 45" E 507.94' (508.13)

End 5/8" rebar. ME. 1977 Sur. for Kirk.
 End 5/8" Iron Rod 1 set 5/8" rebar in its place.
 End 5/8" Iron Rod. 60" at STA. 110+50 O.S.H.D.

SURVEYOR'S CERTIFICATE:

I, G. Dennis Edwards, am a registered surveyor of the State of Oregon and have marked with legal monuments of the land shown on this Plat. I retraced Robinnett's 1948 Plat of "CHARLES TRACTS" from his monuments to the West to establish the corners of Block II. I used a R/W pin and the concrete curb to establish the East line of Block II. I set a 5/8" rebar with a plastic cap as the initial Point of the Northwest corner of said Block II.
DESCRIPTION: Block II of the FIRST AMENDED AND SUPPLEMENTAL PLAT OF "CHARLES TRACTS" lying in the Northwest Quarter of Section 27, Township 5 North, Range 28 East, Willamette Meridian, Umatilla County, Oregon.

G. Dennis Edwards
 G. Dennis Edwards, PLS 951

REGISTERED PROFESSIONAL LAND SURVEYOR

G. Dennis Edwards

OREGON JULY 16, 1971 G. DENNIS EDWARDS 951 RENEWS 12/31/97

OWNER'S DECLARATION:

I, the owner of the land shown hereon, hereby establish this Plat as the official Map and Plat of the "REPLAT OF BLOCK II OF THE FIRST AMENDED AND SUPPLEMENTAL PLAT OF "CHARLES TRACTS." I have notified all utility companies that operate in this area and none are using or intend to use the utility easement, as shown, so it is hereby vacated on this Plat.
 I also dedicate to the public forever the triangular shaped parcel for additional Birtrand Street right of way.

Charles Kirk, Trustee
 Charles Kirk, Trustee of the Charles Kirk Trust, Dated April 13, 1998.

State of Oregon 7 55
 County of Umatilla 3 55
 Subscribed and sworn before me on this 2nd day of August, 1996.

Debra L. Lane
 Notary Public for Oregon
 My commission expires 2-7-98.



This is an exact copy.
G. Dennis Edwards

APPROVALS:

UMATILLA COUNTY SURVEYOR:
 I, Umatilla County Surveyor, do hereby certify that I have examined the accompanying Plat, that it complies with the laws of the State of Oregon with reference to the filing and recording of such Plats and I therefore approve said Plat for the approval of the County Commissioners of Umatilla County, Oregon.
 Dated this 13 day of July, 1996.
David H. Kline
 Umatilla County Surveyor

UMATILLA COUNTY PLANNING COMMISSION:
 The accompanying Plat is hereby approved on this 19 day of AUGUST, 1996.
K.E. Thompson
 Chairman

UMATILLA COUNTY COMMISSIONERS:
 This is to certify that the accompanying Plat is approved for filing and recording in the "Record of Town Plats" of Umatilla County, Oregon, by the undersigned by its order.
 Dated this 20 day of August, 1996.
Emile M. Johnson Chairman
William S. Hamill Commissioner
Ellen Young Commissioner

UMATILLA COUNTY ASSESSOR & TAX COLLECTOR:
 We the Assessor and the Tax Collector of Umatilla County, Oregon, do hereby certify that we have examined the records relative to the land covered by the accompanying Plat and that all monies for the State and County taxes and assessments that could constitute a lien on said land have been paid.
 Dated this 5th day of August, 1996.
Paul Chalmers Assessor
Shirley Weinburn Tax Collector
 Assessment Mfg.

STATE OF OREGON,)
 COUNTY OF UMATILLA)
 I certify that this instrument was received and recorded
 ON August 21, 1996
 at 1:55 o'clock pm., in the record of
 PLATS of said County.
 BOOK PAGE Side
 13 88
OFFICE OF COUNTY RECORDS
 By: Georgia McNaught Records Officer
 Fees \$ 25.00 No. 1996-222178

- LEGEND:**
- Found monuments, as noted.
 - o Set 5/8" x 30" rebar with plastic cap #951.
 - (ooo) of Record, Plat of "CHARLES TRACTS," by Elmo Robinnett in 1948.

