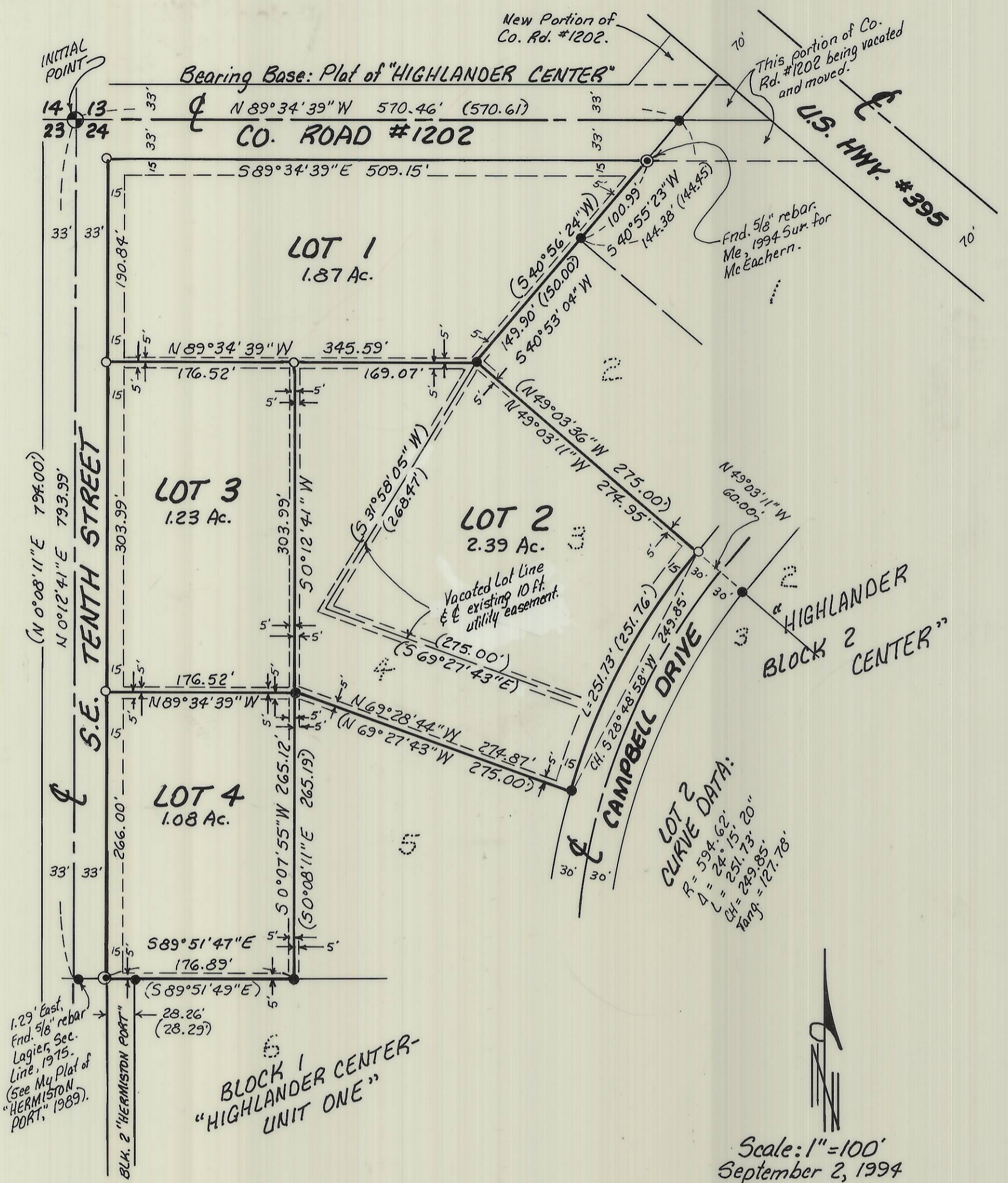


# SPUDNIK ADDITION

To the City of Hermiston. A Replat of Lots 3 and 4, Block 1 of "HIGHLANDER CENTER-UNIT ONE."  
In NW 1/4 Section 24, T4N, R28E, W.M., Umatilla County, Oregon.



Scale: 1" = 100'  
September 2, 1994

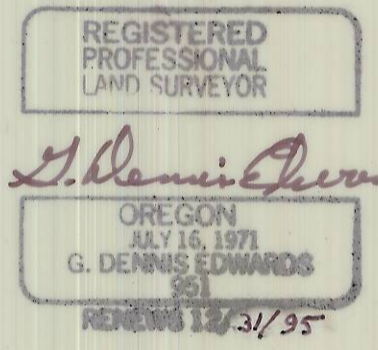
- LEGEND:**
- Found 5/8" rebar. My 1989 Plat of "HERMISTON PORT."
  - Found 5/8" rebar. Lagier, 1975, original Plat of "HIGHLANDER CENTER SUBDIVISION-UNIT ONE."
  - Set 5/8" x 30" rebar. with plastic cap #951.
  - (ooo) of Record. 1975 Plat of "HIGHLANDER CENTER" by Lagier or 1989 Plat of "HERMISTON PORT" by Me.

STATE OF OREGON, } ss  
COUNTY OF UMATILLA, }  
I, Thomas L. Groat, County Clerk, certify that this instrument was received and recorded  
ON DEC 28 1994  
at 9:19 o'clock A.M. in the record of Town Plats of said County in Book 13 Page 56  
THOMAS L. GROAT  
County Clerk  
By s/GEORGIA MCNAUGHT, Deputy  
Fees \$ 15.00 No 94-202081

**SURVEYOR'S CERTIFICATE:**

I, G. Dennis Edwards, am a registered Surveyor of the State of Oregon and have correctly surveyed and marked with legal monuments the land represented on this Plat.  
The Initial Point is the same as shown on the Plat of "HIGHLANDER CENTER-UNIT ONE" and is a 2 1/2" Brass Cap on a 1 1/2" iron pipe, which was set by Krumbein in 1973 at the Northwest corner of Section 24.  
Tom Lagier surveyed "HIGHLANDER CENTER-UNIT ONE" in 1975 and did not show County Road #1241 which runs along the West line of Section 24 nor did he show County Road #1202 which runs along the North line of Section 24.  
In my 1989 survey for the City of Hermiston (Co. #89-86-B) I reset the West Quarter corner of Section 24 at a different location than what Lagier used. That is why my Section line lies 1.29 feet West of Lagier's at the Southwest corner of this subdivision.

G. Dennis Edwards, PLS 951



**LEGAL DESCRIPTION:**

Lots 3 and 4, Block 1, "HIGHLANDER CENTER SUBDIVISION-UNIT ONE," a planned unit development to the City of Hermiston, Umatilla County, Oregon, lying in the Northwest Quarter of Section 24, T4N, R28E, W.M., Umatilla County, Oregon.

**OWNER'S DECLARATION:**

We, Spudnik Equipment Co. Inc., the owners of the land shown hereon, hereby establish this Plat as the official Map and Plat of "SPUDNIK ADDITION." We hereby acknowledge the 5 foot utility easement along the existing lot lines of "HIGHLANDER CENTER-UNIT ONE" and dedicate easements for private and/or public utilities 5 feet in width along the interior lot lines and 15 feet in width along public street rights of way.

Kent Banner, Secretary Treasurer  
Spudnik Equipment Co. Inc.

State of Idaho } ss  
County of Bingham }  
Subscribed and sworn before me on this 15<sup>th</sup> day of September, 1994.

Kent L. Fife  
Notary Public of Idaho  
My commission expires 2/18/00.



NOTE: We could find no record of water rights on this property.

**APPROVALS:**

**UMATILLA COUNTY SURVEYOR:**

I, Umatilla County Surveyor, do hereby certify that I have examined the accompanying Plat, that it complies with the laws of the State of Oregon with reference to the filing and recording of such Plats, and I therefore approve said Plat for the approval of the County Commissioners of Umatilla County, Oregon.  
Dated this 22 day of September, 1994.

David H. Klein  
Umatilla County Surveyor

**CITY OF HERMISTON PLANNING COMMISSION:**

The accompanying Plat is hereby approved and adopted on this 2 day of November, 1994

Bernard W. Cooper  
Chairman

**HERMISTON CITY COUNCIL:**

The accompanying Plat is hereby approved and adopted on this 24 day of OCTOBER, 1994.

Tom Harker  
Mayor

**UMATILLA COUNTY COMMISSIONERS:**

This is to certify that the accompanying Plat is approved for filing and recording in the "Record of Town Plats" of Umatilla County, Oregon, by the undersigned by its order.  
Dated this 21 day of December, 1994.

William S. Howell  
Chairman Commissioner

Smile M. Holman  
Commissioner

**ASSESSOR & TAX COLLECTOR:**

We, the Assessor and the Tax Collector of Umatilla County, Oregon, do hereby certify that we have examined the tax records relative to the land covered by the accompanying Plat and that all monies due for State and County taxes and assessments that could constitute a lien on said land have been paid and we hereby approve said Plat.  
Dated this 19<sup>th</sup> day of December, 1994.

Paul W. Papay  
County Assessor

Shonda Schultz  
County Tax Collector Deputy

RECEIVED BY  
Umatilla County Surveyor  
Date 1-95  
Rec'd By KK  
No. 95-125B

This is an exact copy.  
G. Dennis Edwards

Prepared By:  
Edwards Surveying, P.O. Box 763  
503-567-3336 Hermiston, OR. 97133  
Drawn By: S.K.B.