

ANDERSON MINI ESTATES

A Planned Unit Development to the city of Hermiston, Umatilla County, Oregon
 A replat of "PENDER SECOND ADDITION" which was a Replat of part of
 BLOCK 14 "NEWPORT ADDITION" Lying in the SE 1/4, SW/4 of Section 11,
 T 4 N., R 28 E., W.M.

UMATILLA COUNTY SURVEYOR:

I, Umatilla County Surveyor, do hereby certify that I have examined the accompanying Plat, that it complies with the laws of the State of Oregon with reference to the filing and recording of such Plats, and I, therefore approve said Plat for the approval of the County Commissioners of Umatilla County, Oregon.
 Dated this 7 day of July, 1994.

David H. Klein
 Umatilla County Surveyor

HERMISTON IRRIGATION DISTRICT:

The accompanying Plat is hereby approved.
 This 7 day of July, 1994.

John P. Fulk Manager
Jan McElhatton Secretary

HERMISTON CITY COUNCIL:

The accompanying Plat is hereby approved and adopted on this 25 day of July, 1994.

Tom J. Halverson
 Mayor

CITY OF HERMISTON PLANNING COMMISSION:

The accompanying Plat is hereby approved and adopted on this 13th day of July, 1994.

Bernard W. Cooper CHAIRMAN
Kevin J. McCullough Secretary

UMATILLA COUNTY COMMISSIONERS:

This is to certify that the accompanying Plat is approved for filing and recording in the "Record of Town Plats" of Umatilla County, Oregon, by the undersigned by it's order.
 Dated this ___ day of ___ 1994.

William S. Harrell Chairman
Glenn Young Commissioner
Emile M. Holman Commissioner

STATE OF OREGON, }
 COUNTY OF UMATILLA, }
 I, Thomas L. Groat, County Clerk, certify that this instrument was received and recorded

ON AUG 15, 1994

at 2:07 o'clock P.M. in the record of TOWN PLATS of said County in Book 13 Page 49

THOMAS L. GROAT
 County Clerk
 GEORGIA MCNAUGHT

LEGAL DESCRIPTION:

Vacated "PENDER SECOND ADDITION" a replat of part of BLOCK 14, "NEWPORT ADDITION". Also described as Beginning at the Southeast corner of LOT 14 of said Block 14 of "NEWPORT ADDITION" and running Thence N 0°07'23" E along the East line of said BLOCK 14 a distance of 501.79 feet; Thence N 89°18'45" W 187.27 feet; Thence S 0°03'50" W 183.95 feet to a 5/8" rebar; Thence S 0°06'38" W 317.87 feet to the Southwest corner of LOT 14, BLOCK 14 "NEWPORT ADDITION"; Thence S 89°19'17" E along the South line of said LOT 14 a distance of 187.01 feet to the Initial Point.

SURVEYOR'S CERTIFICATE AND NARRATIVE:

The purpose of this survey is to stake 18 Lots for the construction of 9 Duplexes with common wall construction and shared driveways. See Agreement and Covenants for maintenance of common areas to be filed separately.

Krumbein surveyed this parcel in a 1980 survey for Pender. I retraced that one and one done by me in May for Anderson to set the Boundary of this parcel.

The Initial Point is a 5/8" X 30" rebar driven flush with the ground at the SE corner of Lot 14, Blk. 14 "NEWPORT ADD".

G. Dennis Edwards
 G. Dennis Edwards PLS 951

OWNER'S DECLARATION:

We the owners of the land shown hereon hereby establish this Plat as the official Map and Plat of "ANDERSON MINI ESTATES". We hereby dedicate the 10 foot utility easements along the South and East sides for private and or public utilities. We also Dedicate the three driveway and utility easements as shown. Each one to be shared by the 6 adjoining lots for use and maintenance. See Agreement and Covenants to be filed separately. We also dedicate the 6 foot easement, as shown, for private utilities.

Clarence G. Anderson
 Clarence G. Anderson
Janelle M. Anderson
 Janelle M. Anderson

State of Oregon }
 County of Umatilla } SS

Subscribed and sworn before me on this 1st day of August, 1994.

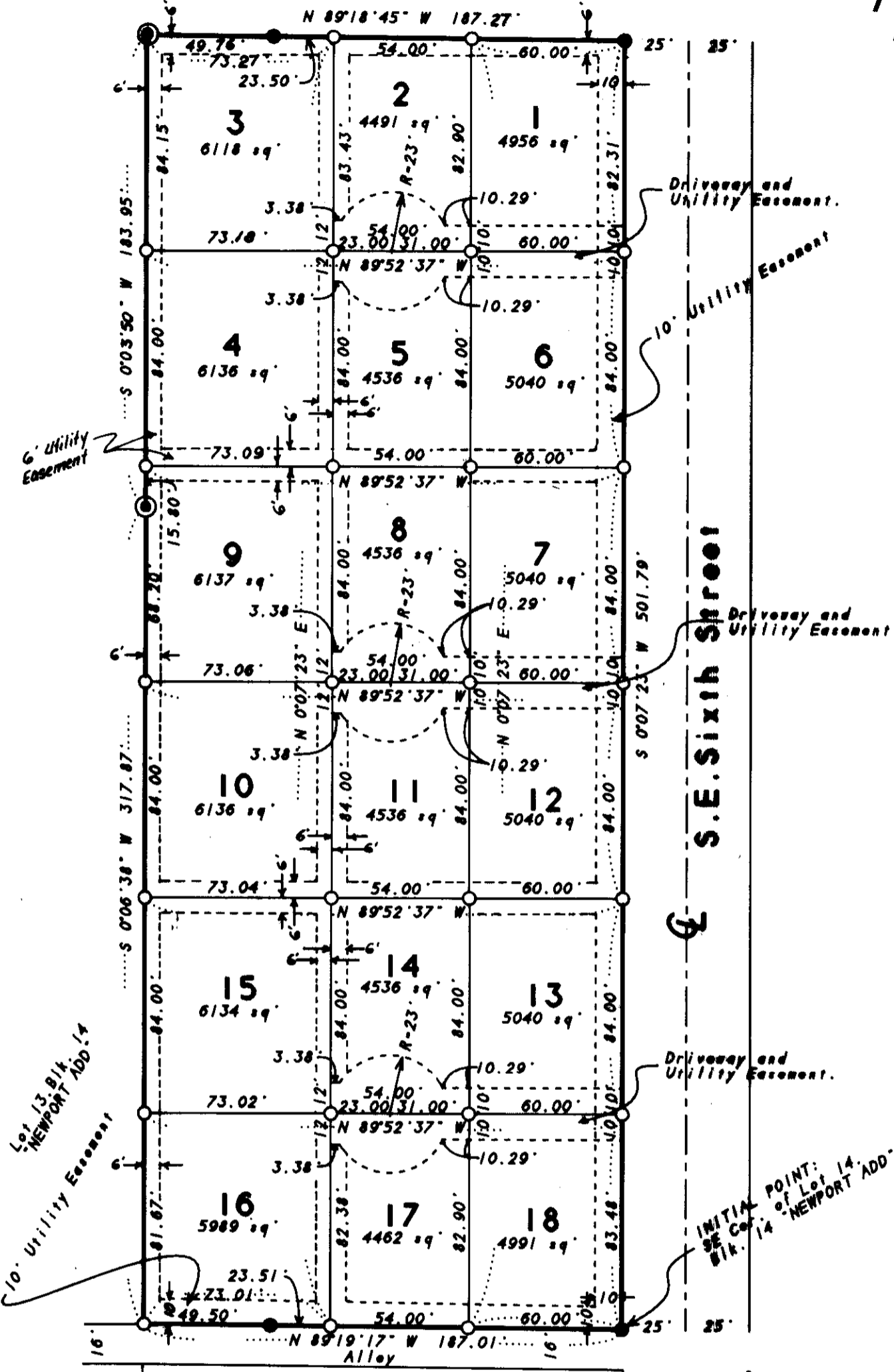
Jim Early
 Notary Public for Oregon
 My commission expires 6-20-97



ASSESSOR AND TAX COLLECTOR:

We, the Assessor and the Tax Collector of Umatilla County, Oregon, do hereby certify that we have examined the tax records relative to the land covered by the accompanying Plat and that all monies due for the State and County taxes and assessments that could constitute a lien on said land have been paid and we hereby approve said Plat.
 Dated this 15th day of August, 1994.

Paul M. Deary County Assessor
Phoneda Schultz County Tax Collector



- Fed. 5/8" X 30" Rebar with Plastic Cap Stamped 951 Edwards May 1994 survey for Gus Anderson.
- Set 5/8" X 30" Rebar with Plastic Cap Stamped 951.
- ⊙ Fed. 5/8" Rebar with Alum Cap. Krumbein, 1980 Co. # R-141-B

REGISTERED PROFESSIONAL LAND SURVEYOR
G. Dennis Edwards
 OREGON JULY 18, 1974
 G. DENNIS EDWARDS 951

This is an exact copy
G. Dennis Edwards

Scale: 1"=50'