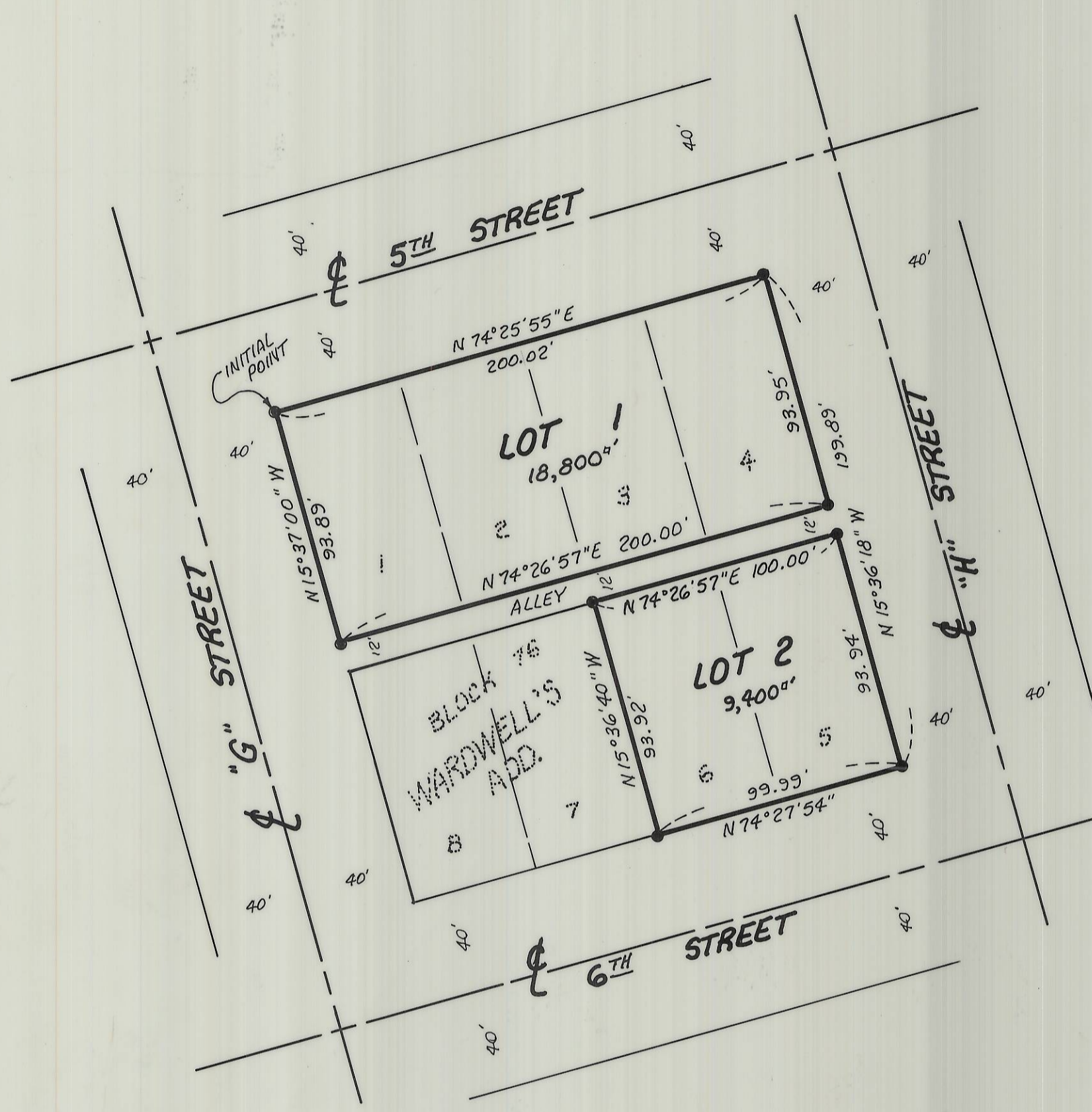


# REPLAT OF LOTS 1, 2, 3, 4, 5 & 6, BLOCK 76, "WARDWELL'S ADDITION"

To the City of Umatilla, Umatilla County, Oregon  
In NW 1/4 Section 17, T5N, R28E, W.M.

Prepared By:  
Edwards Surveying, P.O. Box 763  
503-567-3336 Hermiston, OR 97838  
Drwn. By: S.H.B.



### SURVEYOR'S CERTIFICATE:

I, G. Dennis Edwards, do depose and say that I have surveyed this parcel in a survey dated 6/2/94 for BURK and MATTISON. The Initial Point of this subdivision is a 5/8" x 30" rebar with a plastic cap stamped Edwards, LS 951, driven flush with the ground at the Northwest corner of Block 76, "WARDWELL'S ADDITION" to the City of Umatilla. The description of this parcel is Lots 1, 2, 3, 4, 5 and 6, Block 76, "WARDWELL'S ADDITION" to the City of Umatilla, Umatilla County, Oregon.

*G. Dennis Edwards*  
G. Dennis Edwards, PLS 951



### APPROVALS:

#### UMATILLA COUNTY SURVEYOR:

I, Umatilla County Surveyor, do hereby certify that I have examined the accompanying Replat, that it complies with the laws of the State of Oregon with reference to the filing and recording of such Replats and I, therefore approve said Replat for the approval of the County Commissioners of Umatilla County, Oregon. Dated this 17 day of June, 1994.

*David H. Kline*  
Umatilla County Surveyor

#### CITY OF UMATILLA:

The City Planning Commission hereby approves and adopts this Replat. Dated this 23 day of June, 1994.

*James L. Galt*  
Planning Commission, Chairman

#### UMATILLA COUNTY COMMISSIONERS:

This is to certify that the accompanying Replat is approved for filing and recording by the undersigned by its order dated this 13 day of July, 1994.

*Emile M. Holman*  
Chairman  
*Alvin Young*  
Commissioner

#### ASSESSOR & TAX COLLECTOR:

We, the Assessor and the Tax Collector of Umatilla County, Oregon, do hereby certify that we have examined the tax records relative to the land covered by the accompanying Replat and that the monies due for the State and County taxes and assessments that could constitute a lien on said land have been paid and we hereby approve said Replat. Dated this 13 day of July, 1994.

*Norma Mulligan* Assessor  
*Rhonda Schultz* Tax Collector  
*Blanche Doree* Deputy

### OWNER'S DECLARATION:

Be it hereby known by these presents: that the undersigned owners do hereby establish and acknowledge the accompanying Replat as the official Map and Plat of the "REPLAT OF LOTS 1, 2, 3, 4, 5 & 6, BLOCK 76, WARDWELL'S ADDITION," to the City of Umatilla, Umatilla County, Oregon, and we hereby acknowledge the existing streets and alley, as shown on the Plat of "WARDWELL'S ADDITION."

*Alan Burke*  
Alan Burke  
*Lonnie Mattison*  
Lonnie Mattison

State of Oregon } ss  
County of Umatilla }  
Subscribed and sworn before me on this 29<sup>th</sup> day of June, 1994.

*Linda Gettmann*  
Notary Public for Oregon  
My commission expires 11/4/97



### LEGEND:

- Found 5/8" rebar with plastic cap #951. Set by me in 6/2/94 Survey for Burk and Mattison.

Scale: 1" = 50'  
June 13, 1994

This is an exact copy.  
*G. Dennis Edwards*

STATE OF OREGON, } ss  
COUNTY OF UMATILLA, }  
I, Thomas L. Groat, County Clerk, certify that this instrument was received and recorded  
ON JULY 14, 1994  
at 8:45 o'clock A.M. in the record of TOWN PLATS of said County in Book Page  
13 48  
THOMAS L. GROAT  
County Clerk  
By S. GEORGIA MCNAUGHT Deputy  
Fees \$ 15.00 No 95-196564

RECEIVED BY  
Umatilla County Surveyor  
Date 7-94  
Rec'd By  
No. 94-102-B