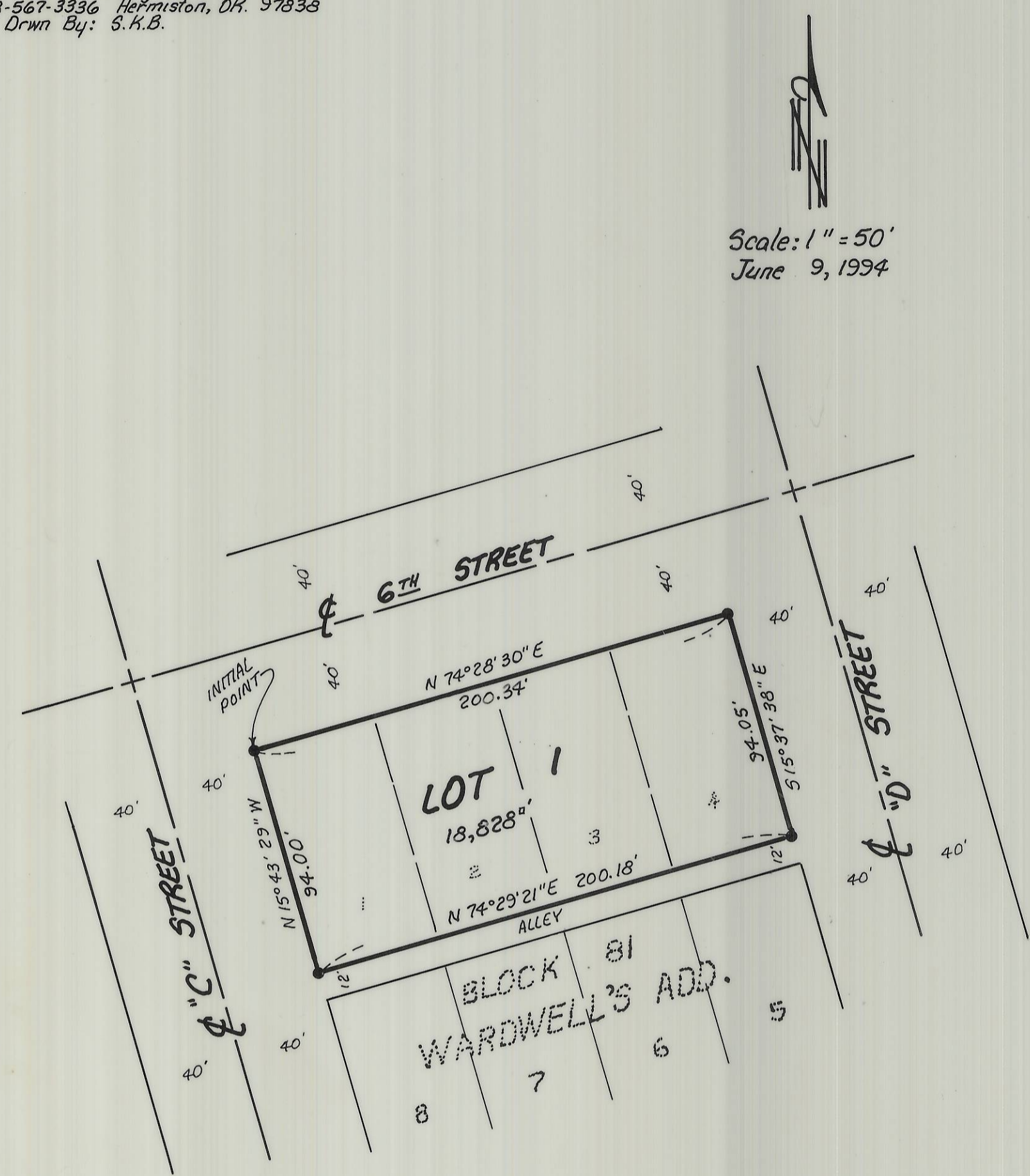


REPLAT OF LOTS 1, 2, 3 & 4, BLOCK 81, "WARDWELL'S ADDITION"

To the City of Umatilla, Umatilla County, Oregon
In NW 1/4 Section 17, T5N, R28E, W.M.

Prepared By:
Edwards Surveying P.O. Box 763
503-567-3336 Hermiston, OR 97838
Drawn By: S.K.B.

Scale: 1" = 50'
June 9, 1994



SURVEYOR'S CERTIFICATE:

I, G. Dennis Edwards, do depose and say that I have surveyed this parcel in a survey dated 6/1/94 for the City of Umatilla. The Initial Point of this subdivision is a 5/8" x 30" rebar with a plastic cap stamped Edwards, LS 951, driven flush with the pavement at the Northwest corner of Block 81, "WARDWELL'S ADDITION" to the City of Umatilla.

The description of this parcel is Lots 1, 2, 3 and 4, Block 81, "WARDWELL'S ADDITION" to the City of Umatilla, Umatilla County, Oregon.

G. Dennis Edwards
G. Dennis Edwards, PLS 951



APPROVALS:

UMATILLA COUNTY SURVEYOR:

I, Umatilla County Surveyor, do hereby certify that I have examined the accompanying Replat, that it complies with the laws of the State of Oregon with reference to the filing and recording of such Replats and I, therefore approve said Replat for the approval of the County Commissioners of Umatilla County, Oregon.
Dated this 17 day of June, 1994.

David H. Kline
Umatilla County Surveyor

CITY OF UMATILLA:

The City Planning Commission hereby approves and adopts this Replat.
Dated this 23 day of June, 1994.

Jane L. Pitt
Planning Commission, Chairman

UMATILLA COUNTY COMMISSIONERS:

This is to certify that the accompanying Replat is approved for filing and recording by the undersigned by its order dated this 13 day of July, 1994.

Emile M. Holmuen Commissioner
John Young Chairman
Commissioner

ASSESSOR & TAX COLLECTOR:

We, the Assessor and the Tax Collector of Umatilla County, Oregon, do hereby certify that we have examined the tax records relative to the land covered by the accompanying Replat and that the monies due for the State and County taxes and assessments that could constitute a lien on said land have been paid and we hereby approve said Replat.
Dated this 13 day of July, 1994.

Norma Mulligan Rhoads Assessor
Blanche Dumas Duplity Tax Collector

UMATILLA COUNTY CLERK:

Attest: I, the County Clerk of Umatilla County, Oregon, do hereby certify that the above named were on the date of said order above specified and now are the duly qualified, elected, sworn and acting Chairman and Commissioners of said County; and that the seal hereto affixed is the seal of my office. Dated this day of June, 1994.

RECEIVED BY
Umatilla County Surveyor
Date 7-94
Rec'd By KR
No. 94-101-B
County Clerk

OWNER'S DECLARATION:

Be it hereby known by these presents: that the undersigned owners do hereby establish and acknowledge the accompanying Plat as the official Map and Plat of the "REPLAT OF LOTS 1, 2, 3 & 4, BLOCK 81, WARDWELL'S ADDITION" to the City of Umatilla, Umatilla County, Oregon, and we hereby acknowledge the existing streets and alley, as shown on the Plat of "WARDWELL'S ADDITION."

Allen Burk
City of Umatilla, Allen Burk,
President of the City Council

State of Oregon } ss
County of Umatilla }

Subscribed and sworn before me on this 29th day of June, 1994.

Linda Lettmann
Notary Public for Oregon
My commission expires 11/4/97



LEGEND:

- Found 5/8" rebar with plastic cap #951. Mq June 1, 1994 Survey for the City of Umatilla.

This is an exact copy.
G. Dennis Edwards

STATE OF OREGON, } ss
COUNTY OF UMATILLA, }
I, Thomas L. Groat, County Clerk, certify that this instrument was received and recorded
ON JULY 14 1994
at 8:30 o'clock A.M. in the record of TOWN PLATS of said County in Book 13 Page 47
THOMAS L. GROAT
County Clerk
By S. GEORGIA MCNAUGHT, Deputy
Fees \$ 15.00 No. 94-196563