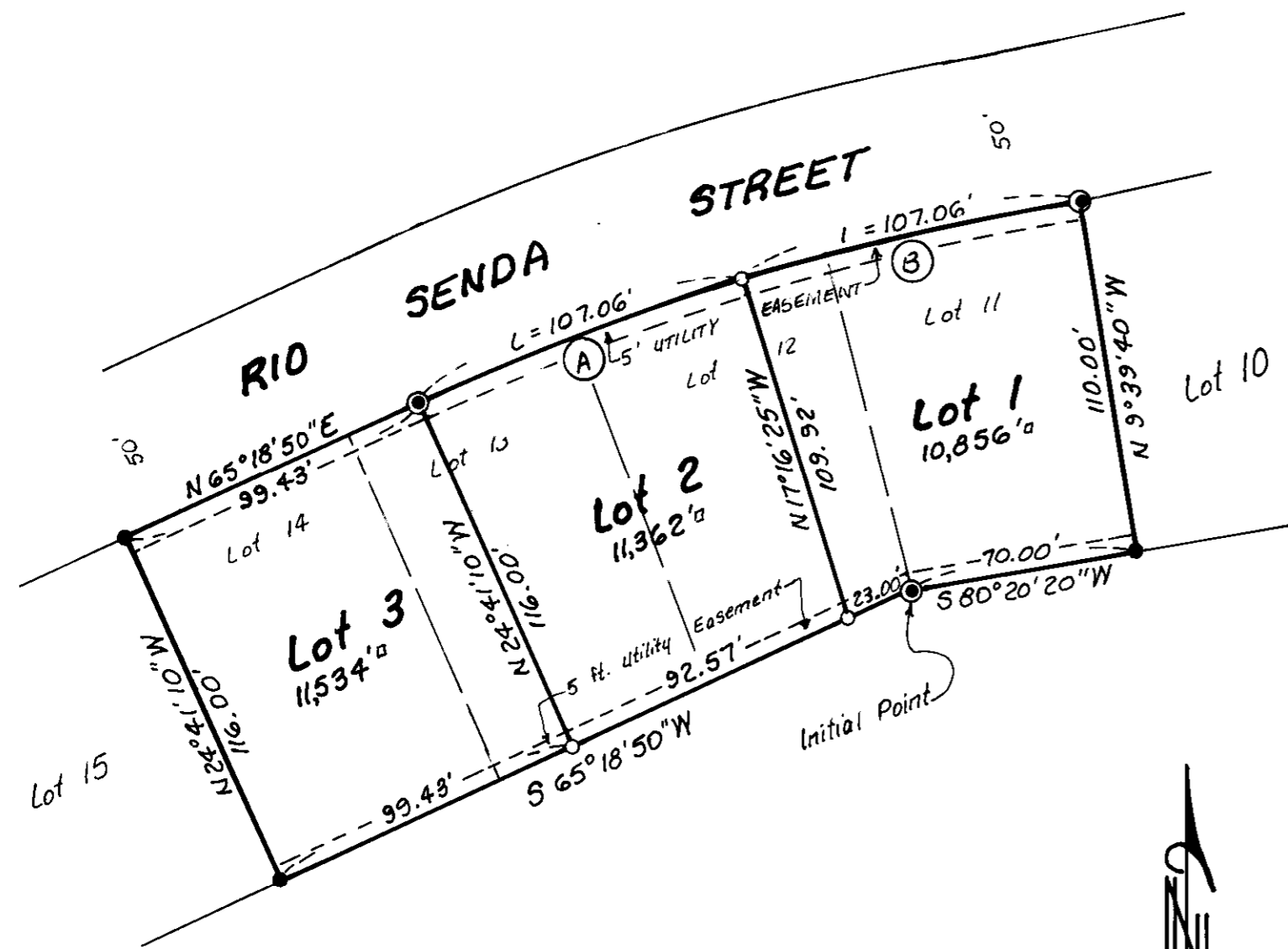


# REPLAT OF LOTS 11, 12, 13 & 14, BLOCK 2, OF "McNary Townsite, Division No. 2"

An Addition to the City of Umatilla, Umatilla County, Oregon  
In NW 1/4, NE 1/4 Section 15, T5N, R28E, W. M.

CURVE DATA					
No.	Radius	Δ	Arc	Chord	Bearing
A	816.57	7°30'43"	107.06	106.98	S76°34'56"W
B	816.57	7°30'43"	107.06	106.98	S69°03'53"W



Scale: 1" = 50'  
Dec. 6, 1993

### LEGEND:

- Found 5/8" rebar. Original 1974 Plat by W. Harris.
- Found 1/2" rebar. Original 1974 Plat by W. Harris.
- Set 5/8" x 30" rebar with plastic cap #951.

Prepared By:  
Edwards Surveying P.O. Box 763  
567-3336 Hermiston, OR. 97838

This is an exact copy.

*G. Dennis Edwards*

### SURVEYOR'S CERTIFICATE:

I, G. Dennis Edwards, do depose and say that I have correctly surveyed and marked with legal monuments, the land represented on the accompanying Plat of the Replat of Lots 11, 12, 13 & 14, Block 2, of McNary Townsite, Division No. 2." The Initial Point is a 5/8" rebar at an angle point in the South line of Lot 1 which was the South corner common to Lots 11 & 12, of Block 2, of McNary Townsite, Division No. 2.

*G. Dennis Edwards*  
G. Dennis Edwards, PLS 951

REGISTERED  
PROFESSIONAL  
LAND SURVEYOR

*G. Dennis Edwards*  
OREGON  
JULY 16, 1971  
G. DENNIS EDWARDS  
951

### LEGAL DESCRIPTION:

Lots 11, 12, 13 & 14, of Block 2, "McNary Townsite, Division No. 2" to the City of Umatilla, Umatilla County, Oregon, as recorded in Book 10, Page 12, Umatilla County Records of Town Plats.

### DEDICATION:

Know all men by these presents: that the undersigned owners of the land shown on the accompanying Plat do hereby establish and declare the accompanying Plat as the official Map and Plat of "REPLAT OF LOTS 11, 12, 13 & 14, BLOCK 2, OF McNARY TOWNSITE, DIVISION NO. 2 and do hereby dedicate to the public forever the streets and utility easements designated on on said Plat.

*Norman H. Schroth*  
Norman H. Schroth

*Melvin C. Ray*  
Melvin C. Ray

*Jesse G. Foster, Jr.*  
Jesse G. Foster, Jr.

State of Oregon } SS  
County of Umatilla }

Subscribed and sworn before me on this 29 day of APRIL, 1994.

*Notary Public of Oregon*  
My commission expires 12/31/94

Source One Mortgage Service Corp. for the purpose of consenting to this dedication, hereby joins in the above dedication.

State of Michigan } SS  
County of } SS

Subscribed and sworn before me on this 12 day of DECEMBER, 1994.

*Notary Public for Michigan*  
My commission expires

### APPROVALS UMATILLA COUNTY SURVEYOR:

I, Umatilla County Surveyor, do hereby certify that I have examined the accompanying Replat, that it complies with the laws of the State of Oregon with reference to the filing and recording of such Replats and I, therefore approve said Replat for the approval of the County Commissioners of Umatilla County, Oregon. Dated this 7 day of January, 1994.

*David W. ...*  
Umatilla County Surveyor

### CITY OF UMATILLA:

The City Planning Commission hereby approves and adopts this Replat. Dated this 29 day of APRIL, 1994.

*Betty J. Stevens*  
Planning Commission

### UMATILLA COUNTY COMMISSIONERS:

This is to certify that the accompanying Replat is approved for filing and recording by the undersigned by its order dated this 29 day of APRIL, 1994.

*William B. ...* Chairman  
*Emile M. ...* Commissioner  
*Alan ...* Commissioner

### ASSESSOR & TAX COLLECTOR:

We, the Assessor and the Tax Collector of Umatilla County, Oregon, do hereby certify that we have examined the tax records relative to the land covered by the accompanying Replat and that the monies due for the State and County taxes and assessments that could constitute a lien on said land have been paid and we hereby approve said Replat. Dated this 20 day of May, 1994.

*Paul ...* Assessor  
*Randy ...* Tax Collector

### UMATILLA COUNTY CLERK:

Attest: I, the County Clerk of Umatilla County, Oregon, do hereby certify that the above named were on the date of said order above specified and now are duly qualified, elected, sworn and acting Chairman and Commissioners of said County; and that the seal hereto affixed is the seal of my office. Dated this 3 day of MAY, 1994.

County Clerk

RECEIVED BY  
Umatilla County Surveyor  
Date 7-94  
Rec'd by  
No. 94-94-B

STATE OF OREGON, }  
COUNTY OF UMATILLA. }  
I, Thomas L. Groat, County Clerk, certify that this instrument was received and recorded  
ON MAY 3 1994  
at 9:00 o'clock A.M. in the record  
of TOWN PLATS of said County in  
Book 13 Page 38

THOMAS L. GROAT  
County Clerk  
S/GEORGIA MCNAUGHT  
By 15:00 No. 94-19953  
Fees \$ No.