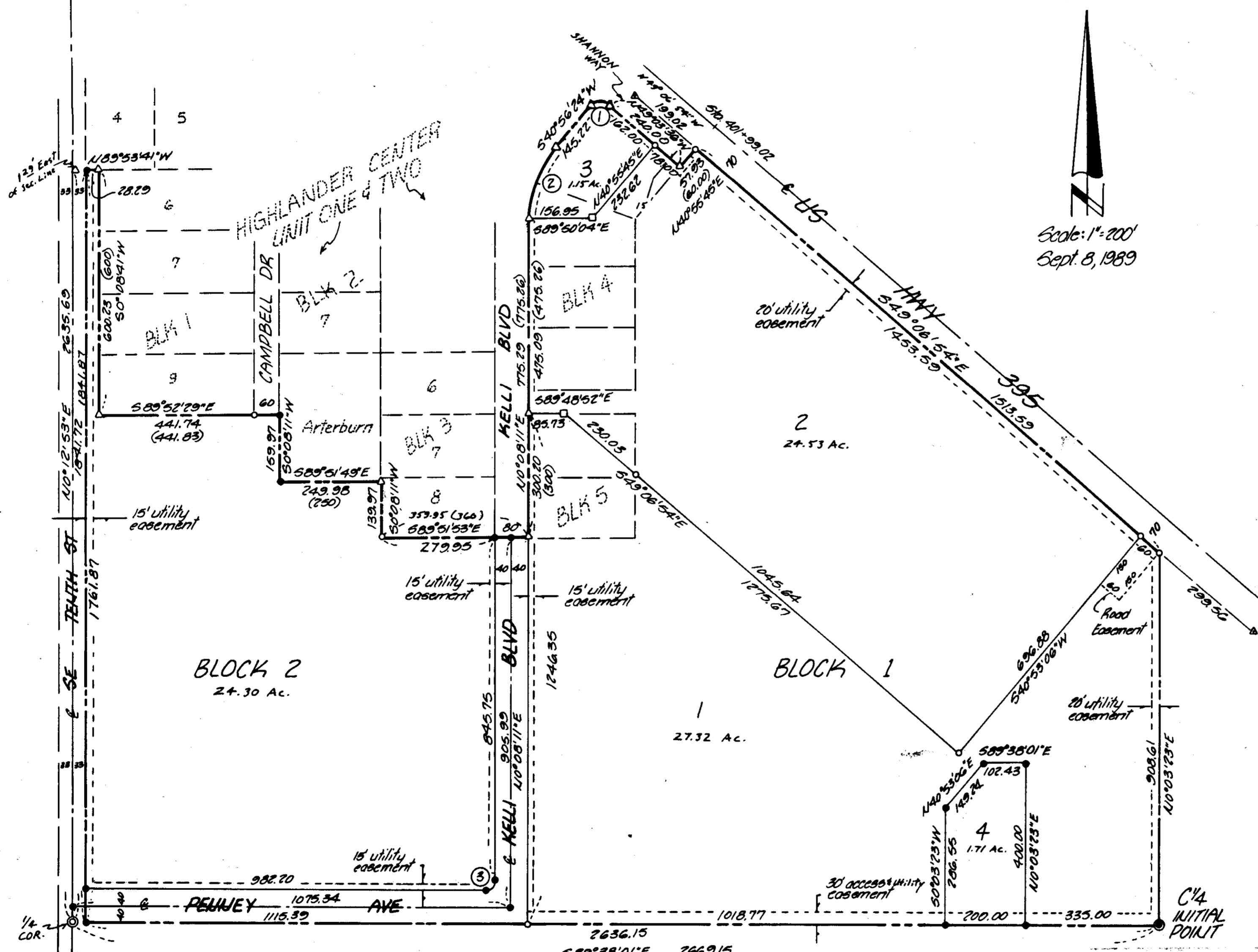


# HERMISTON PORT - UNIT ONE

INCLUDING THE REPLAT OF BLOCKS 4 & 5 OF HIGHLANDER CENTER-UNIT TWO  
in the NW 1/4 of Section 24, T4N, R28E, W.M., Umatilla County



## DEDICATION

Know all men by these presents that the undersigned owners of said tract of land designated in the Surveyors Certificate do hereby establish and acknowledge the accompanying Plat as the official map of "PORT OF UMATILLA-UNIT ONE", including the "REPLAT OF BLOCKS 4 & 5 OF HIGHLANDER CENTER-UNIT TWO", and do hereby dedicate to the Public forever the road and utility easements and roadways designated thereon.

PORT OF UMATILLA  
A Public Municipality  
Dale Chapman  
Dale Chapman  
President

Stephen W. Green  
Stephen W. Green  
Secretary

State of Oregon } 55  
County of Umatilla }

On this 10<sup>th</sup> day of October, 1989, appeared personally the above signed, who are known to me to be the identical individuals who executed the Plat dedication and acknowledged to me that they executed the same free and voluntarily.

Jessie A. Wimer  
Notary Public for the  
State of Oregon

My Commission  
Expires: 11-16-92

INLAND EMPIRE BANK INC.  
Joan Foster  
Joan Foster  
President

Ernie Loomis  
Ernie Loomis  
Secretary

State of Oregon } 55  
County of Umatilla }

On this 5<sup>th</sup> day of OCTOBER, 1989, appeared personally the above signed, who are known to me to be the identical individuals who executed the Plat dedication and acknowledged to me that they executed the same free and voluntarily.

Dubois Hedrick  
Notary Public for the  
State of Oregon

My Commission  
Expires: 5-8-90

Prepared By:

Edwards Surveying  
P.O. Box 763  
Hermiston, Oregon 97838  
Phone: 567-3336

No.	Radius	Tang.	Arc	Chord	Bearing
1.	20.00	20.00	31.42	28.28	S85°56'25"W
2.	260.00	96.70	185.16	181.27	S20°32'18"W
3.	20.00	20.08	31.50	28.34	S45°15'05"W

- denotes set 3/8" x 36" rebar stamped PLS 951 on Alum. Tag
- denotes find 1/2" rebar, Co. Surveyor No. 89-86-8
- denotes find 1 1/4" i. pipe, Co. Surveyor No. "
- ⊙ denotes find Brass Cap, Co. Surveyor No. "
- △ denotes find 3/8" rebar, set by Logler for HIGHLANDER CENTER
- △ Highway Div. R/W 3/8" Rebar
- ( ) denotes of record
- ⊙ denotes find Brass Cap on 1" x 30" galv. i. pipe in a pile of stones as the Initial Point

STATE OF OREGON, }  
COUNTY OF UMATILLA, } ss  
I, J. Dean Fouquette, Sr., County Clerk,  
certify that this instrument was received and  
recorded  
ON Dec. 6, 1989  
at 8:34 o'clock A.M. in the record  
of Town Plats of said County in  
Book 13 Page 11  
J. DEAN FOUQUETTE, SR.  
County Clerk  
By Rettie Jo Browning Deputy  
Fee \$15.00 No. 150976

I, G. Dennis Edwards, certify that this is an exact copy of "HERMISTON PORT-UNIT ONE INCLUDING THE REPLAT OF BLKS. 4 & 5 OF HIGHLANDER CENTER-UNIT TWO".  
G. Dennis Edwards

RECEIVED BY  
1-90  
24  
90-01-B

# HERMISTON PORT - UNIT ONE

INCLUDING THE REPLAT OF BLOCKS 4 & 5 OF HIGHLANDER CENTER-UNIT TWO  
in the NW 1/4 of Section 24, T44N, R28E, W.M., Umatilla County

## SURVEYOR'S CERTIFICATE

I, G. Dennis Edwards, being first duly sworn depose and say that I have surveyed and marked with proper monuments as indicated on the accompanying Plat of "HERMISTON PORT-UNIT ONE", including the REPLAT OF BLOCKS 4 & 5 of HIGHLANDER CENTER-UNIT TWO, in addition in the County of Umatilla, Oregon, and the exterior boundaries being described as:

A parcel of land located in the NW 1/4 of Section 24, T44N, R28E, W.M., in the County of Umatilla, Oregon and being more particularly described as:  
Beginning at the SE corner of the NW 1/4 of Section 24, T44N, R28E, W.M., Umatilla County, Oregon; thence N0°03'23"E along the East line of said NW 1/4 a distance of 908.61 feet to a point on the Southerly right-of-way line of U.S. Highway 395; thence N49°06'54"W along said Southerly right-of-way line a distance of 1513.59 feet; thence S40°55'45"W a distance of 51.93 feet to the NE corner of Lot 1, Block 4, of HIGHLANDER CENTER-UNIT TWO; thence N49°03'36"W along the Southerly right-of-way line of Shannon Way a distance of 240.00 feet; thence along a 20 foot radius curve to the left a distance of 31.42 feet, the chord which bears S86°56'25"W a distance of 28.23 feet to a point on the Easterly right-of-way line of Kelli Boulevard; thence S40°56'24"W along said Easterly right-of-way line a distance of 145.22 feet, thence continuing along said Easterly right-of-way line along a 260 foot radius curve to the left a distance of 165.16 feet, the chord which bears S20°32'13"W a distance of 181.87 feet; thence continuing along said Easterly right-of-way line S0°08'11"W a distance of 775.29 feet to the SW corner of Lot 2, Block 5 of HIGHLANDER CENTER-UNIT TWO; thence N89°51'53"W along the South line of said UNIT TWO a distance of 359.95 feet to the Southwest corner thereof; thence N0°08'11"E along the West line of said UNIT TWO a distance of 153.97 feet to the Southwest corner of that tract of land deceded to E. Arterburn recorded on Roll 63, Page 536 and on Roll 63, Page 1475, Umatilla County Deed Records; thence N89°51'49"W along the South line of said Arterburn tract a distance of 249.93 feet to the Southwest corner thereof; thence N0°08'11"E along the West line of said Arterburn tract a distance of 153.97 feet to the Southwest corner of Campbell Drive as shown on HIGHLANDER CENTER-UNIT ONE; thence N89°52'23"W along the South line of said UNIT ONE a distance of 441.74 feet to the Southwest corner of Block 1 of said UNIT ONE; thence N0°08'41"E along the West line of said Block 1 a distance of 600.23 feet to the Northwest corner of Lot 6 of said Block 1; thence N89°53'41"W along the South line of Lot 4 of said Block 1 a distance of 25.29 feet to a point on the East right-of-way line of SE Tenth Street, (County Road No. 1241); thence S0°12'53"W along said East right-of-way line a distance of 1941.87 feet to a point on the South line of the NW 1/4 of said Section 24; thence S89°38'01"E along said South line a distance of 2636.15 feet to the point of Beginning.

All being in the County of Umatilla, Oregon.  
Containing 82.67 acres.

G. Dennis Edwards  
G. Dennis Edwards  
P.O. 951

I, G. Dennis Edwards, certify that this is an exact copy of "HERMISTON PORT-UNIT ONE, INCLUDING THE REPLAT OF BLOCKS 4 & 5, HIGHLANDER CENTER-UNIT TWO."

G. Dennis Edwards

Subscribed and sworn to before me this 3rd day of October, 1989.

Robert D. Udey  
Notary Public for the State of Oregon

My Commission Expires: 3-7-91



## APPROVALS

### CITY OF HERMISTON PLANNING COMMISSION

The accompanying plat is hereby approved by resolution and adopted on this 3rd day of September, 1989 and approval duly filed.

Arnold W. Carper  
Chairman

Abigail J. Hurlbouse  
Secretary

### HERMISTON CITY COUNCIL

The accompanying is hereby approved by resolution and adopted on this 25th day of September, 1989 and approval duly filed.

William E. Hauffer  
Mayor

### HERMISTON IRRIGATION DISTRICT

The accompanying plat is hereby approved by resolution and adopted on this 5th day of September, 1989 and approval duly filed.

Ray B. Oney  
Chairman

### CITY ENGINEER

Approved this 25th day of September, 1989.

Pat D. Mather  
City Engineer

### UMATILLA COUNTY ASSESSOR AND TAX COLLECTOR

We, the Assessor and the Tax Collector of Umatilla County, Oregon, each hereby certify that we have examined the tax records relative to the land covered by the accompanying plat, and that all monies due for state and county taxes and assessments that could now constitute a lien on said land have been paid and we hereby approve said plat, dated this 5 day of December, 1989.

E. Sam  
Assessor Deputy

Shirley Hudson  
Tax Collector

### UMATILLA COUNTY COMMISSIONERS

This is to certify the accompanying Plat is approved for filing and recording in the "Record of Town Plats of Umatilla County, by the undersigned by its order" dated this 5 day of December, 1989.

William E. Hauffer  
Commissioner

Commissioner

Commissioner

### UMATILLA COUNTY CLERK

Attest: I, the County Clerk of Umatilla County, Oregon, do hereby certify that the above named were on the date of said order above specified and are now the duly qualified, elected, sworn and acting chairmen and commissioners of said county; that the signatures are the genuine signatures thereof and the seal hereat affixed is the seal of my office, dated this 5 day of D.E.C., 1989.

Clara J. Tappan  
County Clerk

### UMATILLA COUNTY SURVEYOR

I, Umatilla County Surveyor, do hereby certify that I have examined the accompanying Plat, that it complies with the laws of the State of Oregon with reference to the filing and recording of such Plats, and I, therefore approve said Plat for the approval of the County Commissioners of Umatilla County, Oregon, dated this 5 day of December, 1989.

David H. Kline  
Umatilla County Surveyor