

# ALORA HEIGHTS SUBDIVISION

## TO THE CITY OF HERMISTON, UMATILLA COUNTY, OREGON

**LEGEND**  
SCALE 1" = 100'  
Set 5/8" x 30" iron rods.  
Found monuments of record.

- Initial point, a 2" brass cap set in 1 1/2" x 30" pipe encased in 6" x 6" x 24" concrete monument.
- Building setback lines. (Regular and oversize lots have 20 foot front yard, 25 foot back yard and 7 foot side yard setback. Corner lots have 20 foot side yard requirement.)

**BASIS OF BEARINGS**  
Bearing between west 1/4 corner and east 1/4 corner defined as N 89° 35' 27" E.

**CENTERLINE CURVE DATA**

CURVE NO.	RADIUS	△	TANGENT DISTANCE	ARC LENGTH	LONG CHORD
1	263.32'	49° 00' 00"	120.00'	225.19'	218.39'
2	310.02'	49° 00' 23"	141.30'	265.17'	257.16'
3	100.01'	89° 59' 37"	100.00'	157.09'	141.43'
4	100.11'	89° 56' 16"	100.00'	157.14'	141.50'
5	167.49'	51° 03' 44"	80.00'	149.27'	144.38'

**ENGINEERS CERTIFICATE**

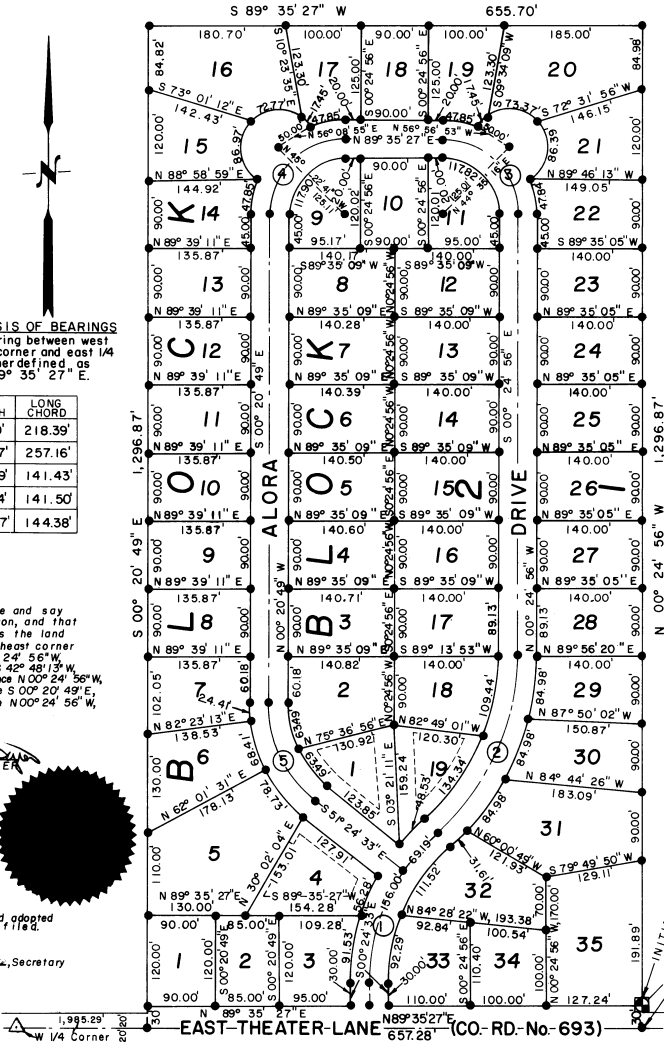
STATE OF OREGON  
COUNTY OF UMATILLA  
I, Thomas F. Lagier, being first duly sworn, do depose and say that I am a duly registered engineer of the State of Oregon, and that I have correctly surveyed and marked with legal monuments the land represented on the above plat: Commencing at the Southeast corner of the NW 1/4 of Section 2, T4N, R28E, W.M.; Thence N 00° 24' 56" W, 3,000 feet to the INITIAL POINT, said point being located S 42° 48' 13" W, 3,263.95 feet of the Northeast corner of said Section 2; Thence N 00° 24' 56" W, 1,296.87 feet; Thence S 89° 35' 27" W, 655.70 feet; Thence S 00° 20' 49" E, 1,326.87 feet; Thence N 89° 35' 27" E, 657.28 feet; Thence N 00° 24' 56" W, 3,000 feet to the INITIAL POINT.



Subscribed and sworn before me this 27th day of July, 1976.  
*Notary Public for Oregon*  
My commission expires 4/9/79

**APPROVALS**

**CITY OF HERMISTON PLANNING COMMISSION**  
The accompanying plat is hereby approved by resolution and adopted on this 17th day of August, 1976 and approval duly filed.  
*Chairman* \_\_\_\_\_ *Secretary* \_\_\_\_\_  
**CITY ENGINEER** 12th day of AUGUST, 1976.  
*Patrick D. Magallon*, City Engineer



**DEDICATION**

STATE OF OREGON  
COUNTY OF UMATILLA

Be it hereby known by these presents that the undersigned does hereby establish and acknowledge the accompanying plat as the official map and plat of ALORA HEIGHTS SUBDIVISION to the City of Hermiston, Umatilla County, Oregon, and that the undersigned owners of the land on the accompanying plat does hereby dedicate to the use of the public forever the streets and avenues designated on said plat, together with a 5.00 foot utility easement adjacent to said street and avenue rights of way.

*Robert M. Milbrandt*  
ROBERT M. MILBRANDT

*Yvonne L. Milbrandt*  
YVONNE L. MILBRANDT

STATE OF OREGON  
COUNTY OF UMATILLA

Be it remembered that on this 30th day of July, 1976, personally appeared before me ROBERT M. MILBRANDT, husband and wife, who are known to me to be the identical persons described in and who executed the above instrument and who acknowledged to me that they executed the same freely and voluntarily.

*Notary Public for Oregon*

My commission expires 4/9/79

**APPROVALS**

**HERMISTON CITY COUNCIL**  
The accompanying plat is hereby approved by resolution and adopted on this 27th day of July, 1976 and approval duly filed.

**HERMISTON IRRIGATION DISTRICT**  
The accompanying plat is hereby approved by resolution and adopted on this 10th day of AUGUST, 1976 and approval duly filed.

**UMATILLA COUNTY ASSESSOR AND TAX COLLECTOR**  
I, Rodney W. Esselstyn and I, D. L. Bratt, respectively Assessor and Tax Collector of Umatilla County, Oregon, each hereby certify that we have examined the tax records relative to the land covered by the accompanying plat, and that all monies due for state and county taxes and assessments that could now constitute a lien on said land have been paid and we hereby approve said plat, dated this 27th day of July, 1976.

**UMATILLA COUNTY COMMISSION**  
This is to certify that the accompanying plat is approved for filing and placed in the record of town plats of Umatilla County, Oregon, by the undersigned by its order dated the 27th day of AUGUST, 1976, and recorded in the County Journal \_\_\_\_\_, page \_\_\_\_\_.

*Chairman* \_\_\_\_\_ *County Assessor* \_\_\_\_\_ *County Tax Collector* \_\_\_\_\_

*Chairman* \_\_\_\_\_ *Commissioner* \_\_\_\_\_ *Commissioner* \_\_\_\_\_

**UMATILLA COUNTY CLERK**  
ATTEST: I, Jesse M. Bell, County Clerk of Umatilla County, Oregon, do hereby certify that the above named were on the date of said order above specified and are now the duly qualified, elected, sworn and acting chairman and commissioners of said county; that the signatures are the genuine signatures thereof and the seal hereto affixed is the seal of my office.

*County Clerk* \_\_\_\_\_



STATE OF OREGON, }  
COUNTY OF UMATILLA, }  
ON Sep. 27, 1976  
at \_\_\_\_\_ o'clock \_\_\_\_\_ M. in the room of \_\_\_\_\_ of said County  
Book \_\_\_\_\_ Page \_\_\_\_\_  
JESSE M. BELL  
County Clerk  
By \_\_\_\_\_  
Fees \$ \_\_\_\_\_