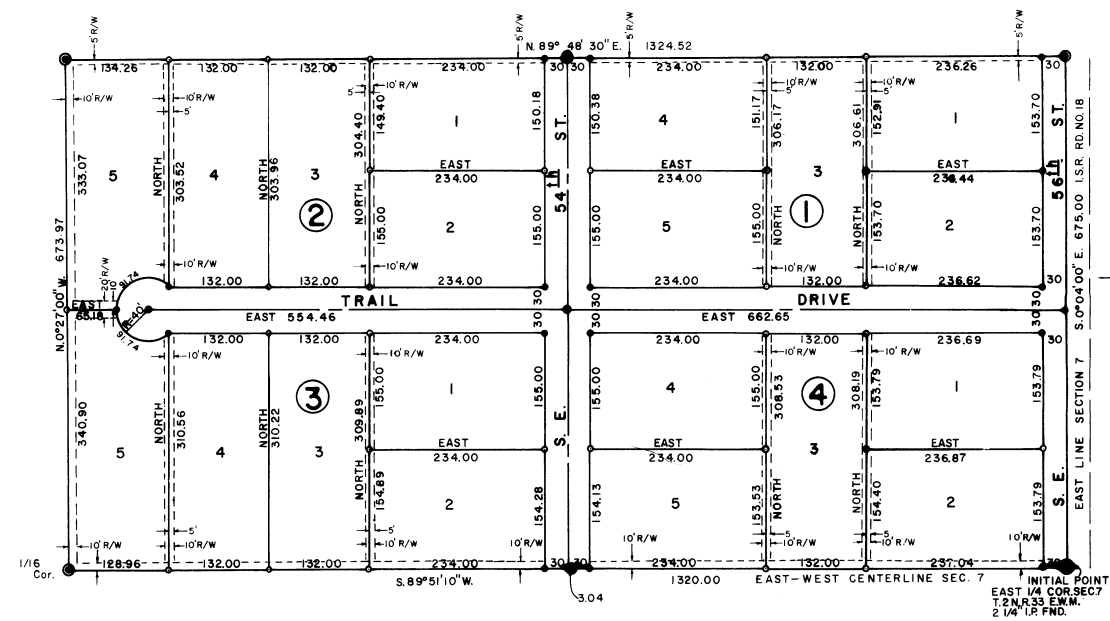


# OREGON TRAIL HOMESITES

A TRACT OF LAND LOCATED IN THE SOUTH 1/2 OF THE S.E. 1/4 OF THE N.E. 1/4 OF SECTION 7, T.2.N.R.33 E.W.M.  
 SCALE: 1"=100' DATE: FEBRUARY 1967  
 SURVEYOR: RALPH THOMPSON, PENDLETON, OREGON  
 OWNER: E.W. BARNUM, PENDLETON, OREGON

## LEGEND

- Found 2 1/4" I.P.
- ⊙ Found Brass capped monuments on 1 1/4"x30" I.P.
- ⊙ Set 5/8"x30" I.P.
- ⊙ Set 1/2"x24" I.P.
- R/W Utility Easement



## CITY PLANNING COMMISSION

THE accompanying plat is hereby approved by resolution of the undersigned and adopted on this 18 day of May, 1967, and approval duly filed.  
 CITY PLANNING COMMISSION Alice H. Johnson Chairman  
 of the City of Barbara S. Joddy Secretary  
 PENDLETON, OREGON

## CITY ENGINEER

APPROVED this 13 day of April, 1967  
John J. Parvito  
 City Engineer

## COUNTY ASSESSOR AND SHERIFF

I, Lloyd E. Stafford, and I, Roy Johnson, Respectfully Assessor and Sheriff of Umatilla County, Oregon, do hereby certify that we have examined the tax records relative to the land covered by the accompanying plat and that all moneys due for state and county taxes and assessments that could now constitute a lien on said land have been paid, and we hereby approve of said plat.  
 APPROVED this 27 day of March, 1967.

Lloyd E. Stafford  
 Assessor  
Roy Johnson  
 Sheriff

## COUNTY COURT

THIS is to certify that the accompanying is approved for filing and record in "RECORD OF TOWN PLATS" of Umatilla County, Oregon, by the undersigned by its order dated May 23, 1967, and recorded in the County Court Journal \_\_\_\_\_ page \_\_\_\_\_

COUNTY COURT OF  
 UMATILLA COUNTY,  
 STATE OF OREGON  
 BY D.P. Cook County Judge  
 BY R. Bees County Commissioner  
 BY Dale A. Hays County Commissioner

STATE OF OREGON  
 COUNTY OF UMATILLA: S.S.  
 I, RALPH P. THOMPSON, BEING FIRST DULY SWORN, DEPOSE AND SAY: THAT I CORRECTLY SURVEYED AND MARKED WITH PROPER MONUMENTS, AS INDICATED ON THE ACCOMPANYING PLAT OF "OREGON TRAIL HOMESITES" IN UMATILLA COUNTY OREGON. FOR THE INITIAL POINT I USED THE EAST 1/4 CORNER OF SECTION 7 MARKED BY A 2 1/4" IRON PIPE; THENCE S.89°51'10"W ALONG THE EAST-WEST CENTERLINE OF SAID SECTION A DISTANCE OF 1320.00 FEET TO THE S.W. CORNER OF THE SOUTH 1/2 OF THE S.E. 1/4 OF THE N.E. 1/4 OF SAID SECTION; THENCE N.0°27'00"W ALONG THE WEST LINE OF THE SO. 1/2 S.E. 1/4 N.E. 1/4 A DISTANCE OF 673.97 FEET TO THE N.W. CORNER OF THE SO. 1/2 S.E. 1/4 N.E. 1/4; THENCE N.89°48'30"E ALONG THE NORTH LINE OF THE SO. 1/2 S.E. 1/4 N.E. 1/4 A DISTANCE OF 1324.52 FEET TO THE N.E. CORNER OF THE SO. 1/2 S.E. 1/4 N.E. 1/4; THENCE S.0°04'00"E ALONG THE EAST LINE OF SAID SECTION A DISTANCE OF 675.00 FEET TO THE POINT OF BEGINNING.

DEDICATION:  
 KNOW ALL MEN BY THESE PRESENTS, that the undersigned persons, being the owners of the land shown on the accompanying plat, do hereby dedicate to the use of the public forever the streets, driveways, avenues, roads and utility easements designated on said plat, and do hereby establish and acknowledge the accompanying Plat as the official Map and Plat of "OREGON TRAIL HOMESITES", Umatilla County, Oregon.

DATED March 27 1967 E.W. Barnum  
 E.W. BARNUM  
Clare E. Barnum  
 CLAIRE E. BARNUM

REGISTERED OREGON LAND SURVEYOR  
Ralph P. Thompson  
 MAY 13, 1960  
 RALPH P. THOMPSON  
 506

Ralph P. Thompson  
 REGISTERED LAND SURVEYOR  
 STATE OF OREGON REG. NO. 506  
 I, Ralph P. Thompson, hereby certify that this tracing is a true and exact copy of the plat of OREGON TRAIL HOMESITES.

STATE OF OREGON ) S.S.  
 COUNTY OF UMATILLA )  
 ON March 27 1967 A.D., BEFORE ME PERSONALLY APPEARED THE ABOVE NAMED PERSONS AND ACKNOWLEDGED THE FOREGOING INSTRUMENT TO BE THEIR VOLUNTARY ACT AND DEED.  
Mary C. Blaine  
 NOTARY PUBLIC FOR OREGON  
 MY COMMISSION EXPIRES 5/1 1968

SUBSCRIBED AND SWORN TO BEFORE ME THIS 27th DAY OF March 1967  
Mary C. Blaine  
 NOTARY PUBLIC FOR OREGON  
 MY COMMISSION EXPIRES 5/1 1968

## COUNTY CLERK

I, Jessie M. Bell, County Clerk of Umatilla County, Oregon, do hereby certify that the above named were on the date of said order above specified and are now the duly qualified, elected, sworn, and acting officers and that the signatures are genuine and that the seal hereto affixed is the seal of my office.

Jessie M. Bell  
 County Clerk

FILED FOR RECORD  
 COUNTY OF UMATILLA  
 CLERK OF COUNTY CLERK  
 ON May 24 1967  
1:30 P.M.  
John P. [Signature]  
 9 24  
Jack Nelson  
 294915