

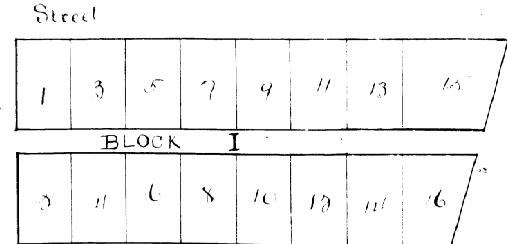
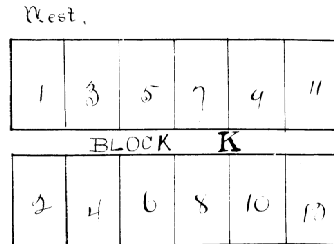
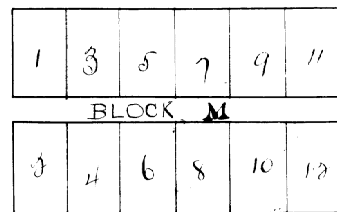
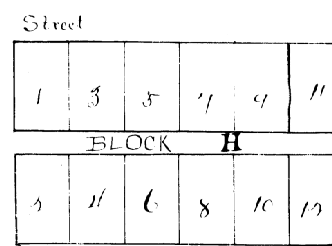
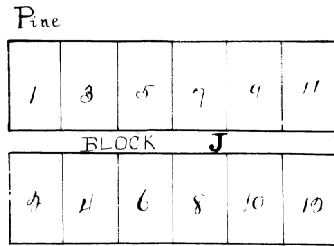
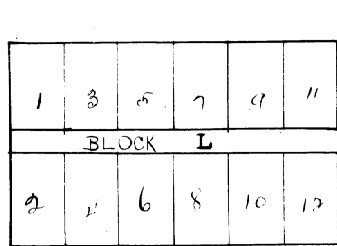
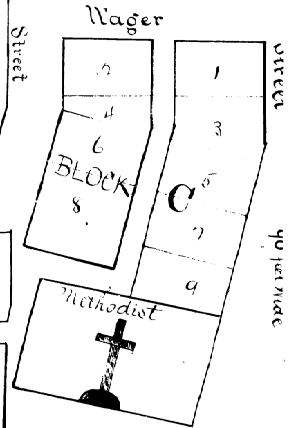
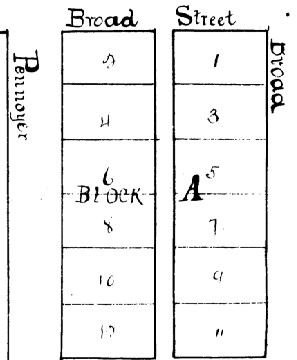
Town Plot of Olba Umatilla County Oregon

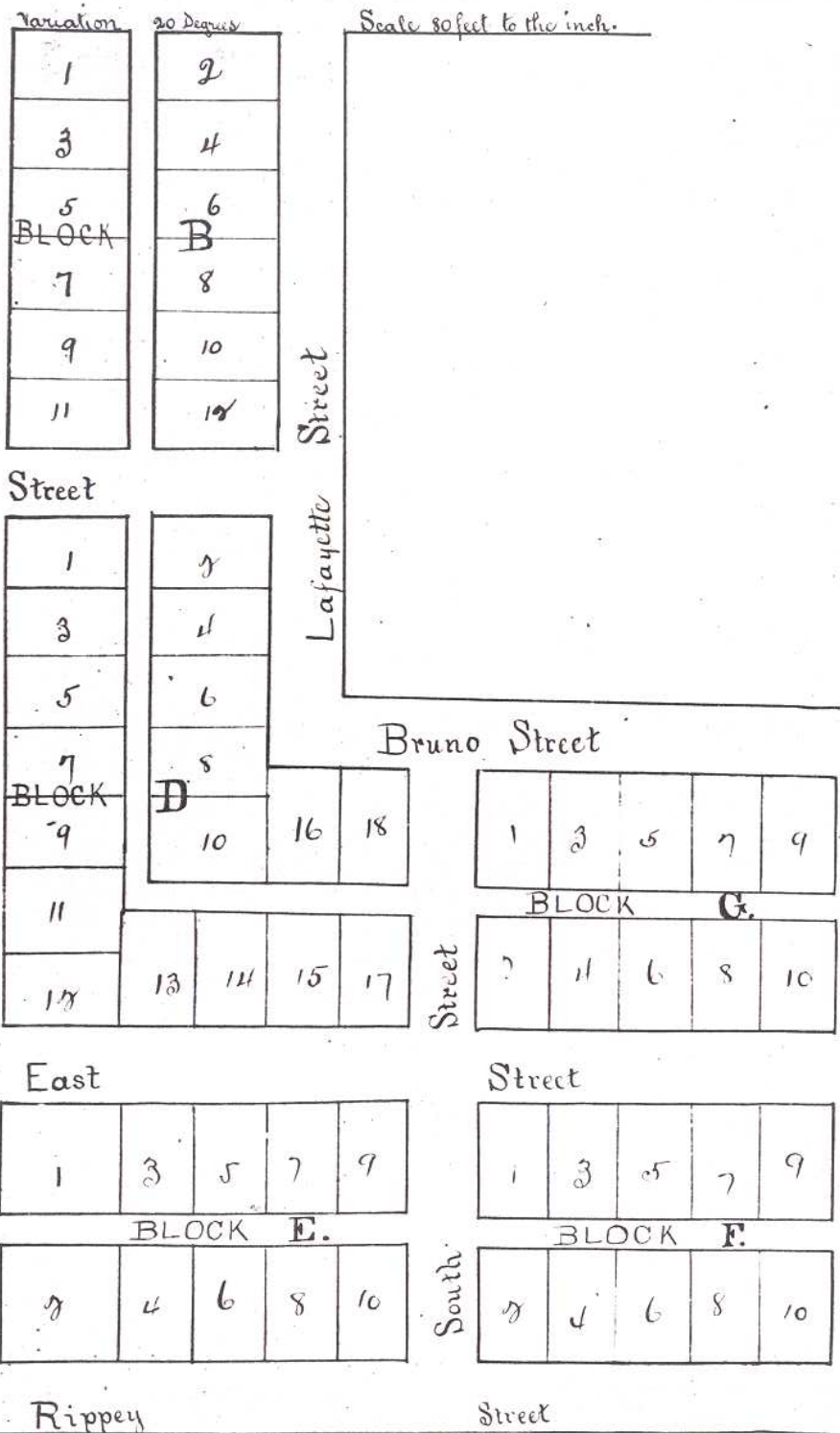
Quarter Post

North side of Section 211
Town 4 South, Range 3 East 10th M.

John H. Clifford, Proprietor.

La. F. Knight, Surveyor
Olba, February 25th 1877





State of Oregon } ss.
 County of Imatilla

Thereby certify that the within
 instrument was received for record
 on the 2nd day of March 1887 at
 8 o'clock a.m.

G.A. Hartman, clerk.

See Plat No 3.