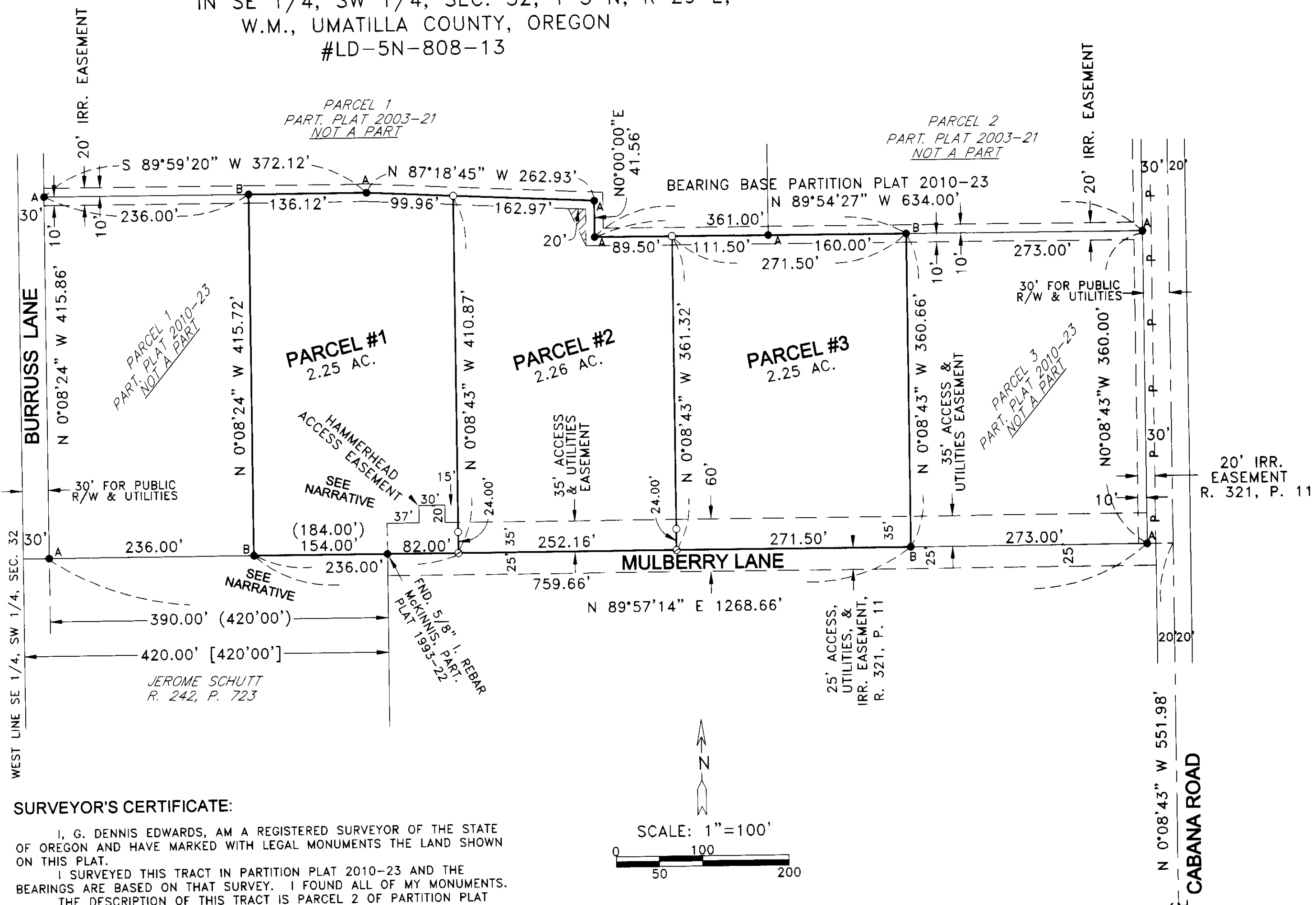


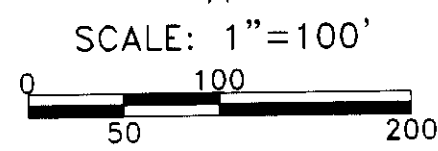
PARTITION PLAT 2013-10

A REPLAT OF PARCEL 2 OF PARTITION PLAT 2010-23
 IN SE 1/4, SW 1/4, SEC. 32, T 5 N, R 29 E,
 W.M., UMATILLA COUNTY, OREGON
 #LD-5N-808-13



SURVEYOR'S CERTIFICATE:

I, G. DENNIS EDWARDS, AM A REGISTERED SURVEYOR OF THE STATE OF OREGON AND HAVE MARKED WITH LEGAL MONUMENTS THE LAND SHOWN ON THIS PLAT.
 I SURVEYED THIS TRACT IN PARTITION PLAT 2010-23 AND THE BEARINGS ARE BASED ON THAT SURVEY. I FOUND ALL OF MY MONUMENTS. THE DESCRIPTION OF THIS TRACT IS PARCEL 2 OF PARTITION PLAT 2010-23 IN THE SE 1/4 OF SW 1/4 OF SECTION 32, T 5 N, R 29 E, WILLAMETTE MERIDIAN, UMATILLA COUNTY, OREGON.
 I DISCOVERED AN ERROR ON PARTITION PLAT 2010-23. I SHOWED TWO WRONG DISTANCES TO MCKINNIS' MONUMENT AT THE NE CORNER OF SCHUTT. THE DISTANCE FROM SCHUTT'S NE CORNER TO THE SE CORNER OF PARCEL 1, 2010-23, IS 154 FEET NOT 184 FEET AND FROM SAID NE CORNER TO THE SW CORNER OF SAID PARCEL 1 SHOULD BE 390 FEET NOT 420 FEET. SCHUTT'S NE CORNER AND THE HAMMERHEAD TURNAROUND ARE BOTH DRAWN 30 EAST OF THEIR TRUE LOCATION ON PARTITION PLAT 2010-23. THE LOCATION AND DISTANCES TO SCHUTT'S NE CORNER ARE CORRECT ON MY PARTITION PLAT 2003-21.
 I USED A TOPCON HIPER+ G.P.S. TO CONDUCT THIS SURVEY.



- LEGEND:**
- FOUND MONUMENTS AS NOTED OR AS BELOW
 - FOUND 5/8" IRON REBAR WITH PLASTIC CAP #951, SET BY ME IN PART. PLAT #2003-21
 - FOUND 5/8" IRON REBAR WITH PLASTIC CAP #951, SET BY ME IN PART. PLAT #2010-23
 - SET 5/8"X30" IRON REBAR WITH PLASTIC CAP #951
 - ⊙ COMPUTED LOCATION
 - ▨ NEW IRRIGATION EASEMENT
 - (000) OF RECORD, MY ERRONEOUS, ON PARTITION PLAT 2010-23
 - [000] OF RECORD, MY PARTITION PLAT 2003-21 & SCHUTT DEED

APPROVALS:
UMATILLA COUNTY SURVEYOR
 APPROVED THIS 12 DAY OF June, 2013
David H. Klein
 UMATILLA COUNTY SURVEYOR

HERMISTON IRRIGATION DISTRICT
 APPROVED THIS 11th DAY OF June, 2013
Jeremy Bole
 MANAGER

UMATILLA COUNTY PLANNING DEPARTMENT
 APPROVED THIS 21st DAY OF June, 2013
Jeff Maller
 UMATILLA COUNTY PLANNING DIRECTOR

UMATILLA COUNTY TAX COLLECTOR
 TAXES ARE PAID IN FULL
 APPROVED THIS 14th DAY OF June, 2013
Bethline Enright by Kristen Shanard
 UMATILLA COUNTY TAX COLLECTOR

STATE OF OREGON,
 COUNTY OF UMATILLA }
 I certify that this instrument was received and recorded
 ON June 25, 2013
 at 11:25 o'clock Am., in the record of
 PLATS of said County.
 YEAR NUMBER Slide
 2013 10

OFFICE OF COUNTY RECORDS
 By: ...Steve Churchill... Records Officer
 Fees \$ 73.00 No. 2013-6060742

OWNER'S DECLARATION & DEDICATION::

WE, THE OWNERS OF THE HEREON DESCRIBED LAND, HEREBY DECLARE THAT WE HAVE CAUSED THIS PLAT TO BE PREPARED. WE HEREBY ACKNOWLEDGE THE EASEMENTS AND RIGHTS OF WAY AS SHOWN ON PARTITION PLATS 2003-21 AND 2010-23 AND AS CORRECTED ON THIS PLAT. WE HEREBY DEDICATE A 20 FOOT BY 41.56 FOOT TRIANGLE FOR ADDITIONAL WIDTH FOR AN IRRIGATION EASEMENT. IT IS SHOWN AS CROSS HATCHED ON THE NORTH LINE OF PARCEL 2.

H. Eugene Smith
 H. EUGENE SMITH (OWNER)
Jacquelyn R. Smith
 JACQUELYN R. SMITH (OWNER)

STATE OF OREGON }
 COUNTY OF UMATILLA }
 BEFORE ME THIS 14TH DAY OF JUNE, 2013
 APPEARED H. EUGENE SMITH AND JACQUELYN R. SMITH, OWNERS, AND ACKNOWLEDGED THE FOREGOING DEDICATION.

Steve Churchill
 NOTARY PUBLIC FOR OREGON
STEVE CHURCHILL
 PRINTED NAME
 COMMISSION NO. A451169
 MY COMMISSION EXPIRES 08-14-2014

RECEIVED BY
 Umatilla County Surveyor
 Date: 6/28/2013
 Rec'd By: S. Dea
 No.: 13-201-B

THIS IS AN EXACT COPY: *G. Dennis Edwards*
 G. DENNIS EDWARDS

REGISTERED PROFESSIONAL LAND SURVEYOR

G. Dennis Edwards

OREGON
 JULY 16, 1971
 G. DENNIS EDWARDS
 9 5 1
 RENEWS 12/31/2013

JOB# S0301021C
 EDWARDS SURVEYING P.O. BOX 763
 541-567-3336 HERMISTON, OREGON 97838
 DRAWN BY JMC