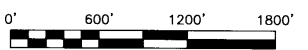
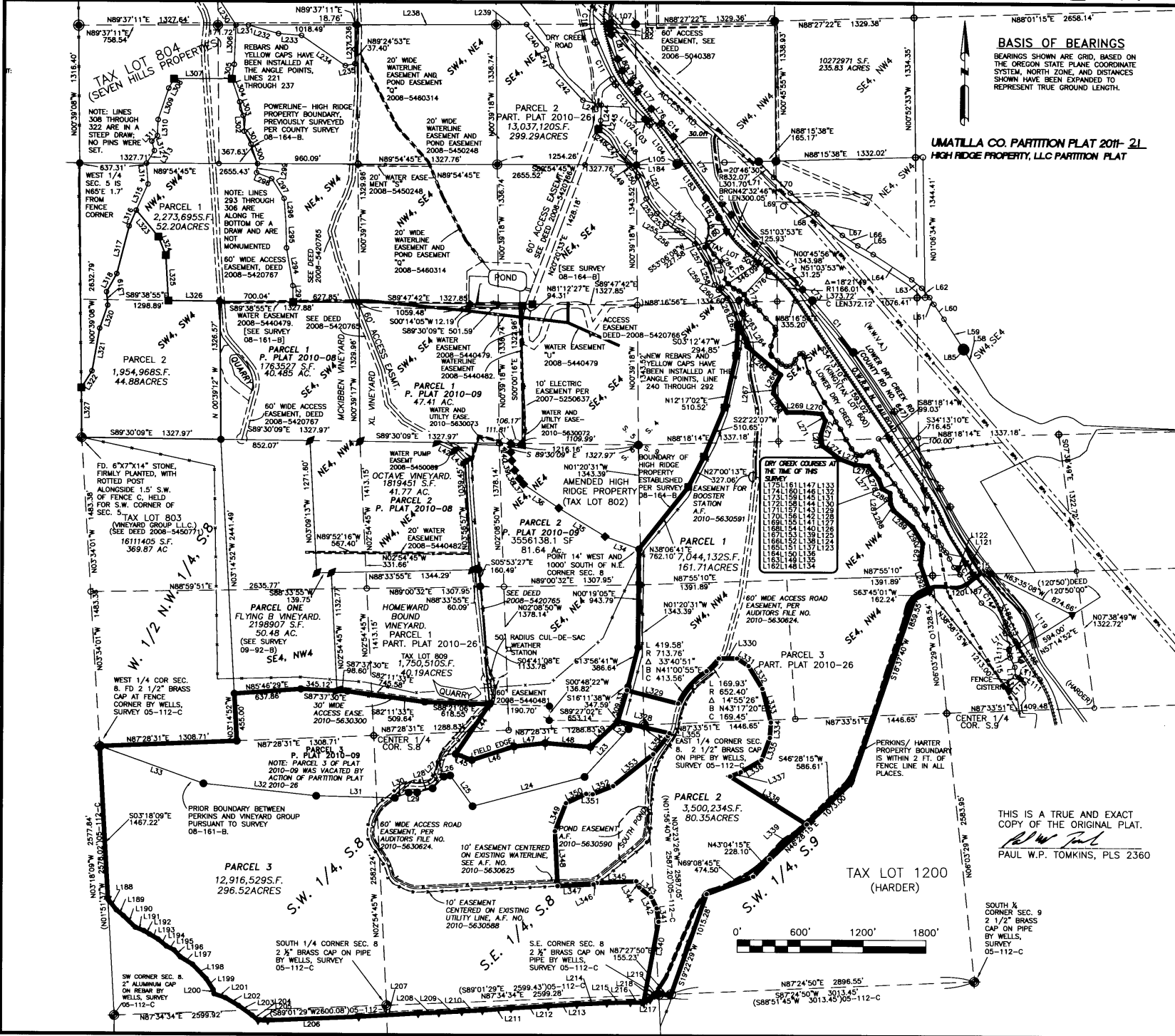


STATE OF OREGON, COUNTY OF UMATILLA } I certify that this instrument was received and recorded ON September 29, 2011 at 3:45 o'clock P.m. in the record of PLATS of said County. YEAR NUMBER Slide 2011 21 OFFICE OF COUNTY RECORDS By: JEAN HEMPHILL, Records Officer Fees \$ 65.00 No. 2011-5830274

BASIS OF BEARINGS

BEARINGS SHOWN ARE GRID, BASED ON THE OREGON STATE PLANE COORDINATE SYSTEM, NORTH ZONE, AND DISTANCES SHOWN HAVE BEEN EXPANDED TO REPRESENT TRUE GROUND LENGTH.

UMATILLA CO. PARTITION PLAT 2011-21 HIGH RIDGE PROPERTY, LLC PARTITION PLAT



THIS IS A TRUE AND EXACT COPY OF THE ORIGINAL PLAT. PAUL W.P. TOMKINS, PLS 2360



5 North Oakville, Walla Walla, WA 99382 (509) 522-4843

REGISTERED PROFESSIONAL LAND SURVEYOR

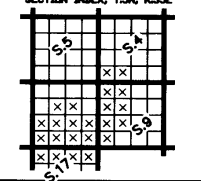
OREGON JULY 26, 1988 PAUL W.P. TOMKINS 2360

REVISION 6/30/12

Date Stamped: 9/15/11

Project: A REPLAT OF PARCEL 3, PART. PLAT 2010-26 OF MAP 5N 35, BEING LOCATED IN THE NE 1/4, THE NW 1/4, THE SE 1/4 AND THE SW 1/4 OF SEC. 8, AND IN THE SOUTH 1/2 OF THE SW 1/4 OF SEC. 4, THE NW 1/4 AND SW 1/4 OF SEC. 9, AND THE NW 1/4 AND THE NE 1/4 OF SEC. 17, T5N, R35E, W.M., UMATILLA CO. OR

Client: NORM MCKIBBEN SEVEIN VINEYARDS 83501 LOWER DRY, CR. RD. MILTON FREETWATER, OR



Project Mgr. PWPT

Drawn PWPT

Checked GEF

Date 07-25-2011

Scale 1" = 600'

CAD File HIGH RIDGE PART PLAT 2011.DWG

Sheet Contents: HIGH RIDGE PART PLAT 2011.DWG

Sheet No.: 1 OF 2

US.K.H. W.O. 133270

RECEIVED BY

Handwritten notes and signatures at the bottom right of the sheet.

FILE: H:\13327000\SURVEY\DWGS\HIGH RIDGE PART PLAT 2011.DWG PLOTTED: Sep 15, 2011 - 9:54:31 AM (Paul Tomkins)

UMATILLA CO. PARTITION PLAT 2011-21
HIGH RIDGE PROPERTY, LLC PARTITION PLAT

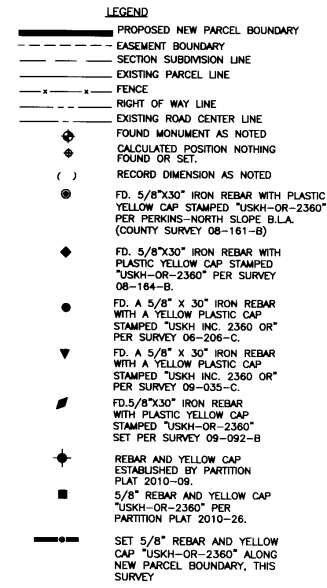
STATE OF OREGON, COUNTY OF UMATILLA }
I certify that this instrument was received and recorded
ON September 29, 2011
at 3:45 o'clock P.m., in the record of PLATS of said County.
YEAR 2011 NUMBER 21 Slide
OFFICE OF COUNTY RECORDS
By: JEAN HEMPHILL, Records Officer
Fees \$ 65.00 No. 2011-5830274

Table with columns: LINE, BEARING, DISTANCE. Contains survey data for lines L1 through L327.

Table with columns: CURVE, RADIUS, ARC LENGTH, CHORD LENGTH, CHORD BEARING, DELTA ANGLE. Contains curve data for curves C1 through C14.

LEGAL DESCRIPTION:
PARCEL 3 OF UMATILLA COUNTY PARTITION PLAT 2010-26, SAID PARTITION PLAT HAVING BEEN FILED IN THE RECORDS OF THE UMATILLA COUNTY RECORDER ON DECEMBER 6, 2010 UNDER RECORDING NO. 2010-5730072.

NARRATIVE:
THIS SURVEY WAS PERFORMED AT THE REQUEST OF NORM MCKIBBEN TO PARTITION LANDS CREATED BY A PARTITION IN 2010. THIS SURVEY WAS PERFORMED AS A REAL TIME KINEMATIC SURVEY USING TOPCON HIPER PLUS DUAL FREQUENCY GPS RECEIVERS WITH A PRECISION OF ONE CENTIMETER ± 1 PPM.



APPROVALS
APPROVED THIS 29th DAY OF September 2011, IN ACCORDANCE WITH UMATILLA COUNTY DEVELOPMENT CODE,
[Signature] UMATILLA COUNTY PLANNING DIRECTOR
APPROVED THIS 26th DAY OF Sept 2011, IN ACCORDANCE WITH THE UMATILLA COUNTY DEVELOPMENT CODE.
[Signature] UMATILLA COUNTY SURVEYOR

OWNERS' DECLARATION
KNOW ALL MEN BY THESE PRESENTS THAT I, NORM MCKIBBEN, MANAGING PARTNER FOR HIGH RIDGE PROPERTY, LLC, OWNER, HAVE CAUSED THESE LANDS TO BE SURVEYED AND SUBDIVIDED AS SHOWN, AND DO HEREBY DEICATE THE PARTITION PLAT TO UMATILLA COUNTY, OREGON.
[Signature] NORM MCKIBBEN, MANAGING PARTNER FOR HIGH RIDGE PROPERTY, LLC
DATE 9/15/2011

TAX COLLECTOR'S CERTIFICATE
I HEREBY CERTIFY THAT ALL TAXES FOR THE YEAR 2011 AGAINST THE PROPERTY SHOWN HEREIN HAVE BEEN PAID.
[Signature] UMATILLA COUNTY TAX COLLECTOR
DATE

This is a true and exact copy of Page 2 of the original plat.
[Signature]

ACKNOWLEDGEMENT
STATE OF WASHINGTON COUNTY OF WALLA WALLA
BEFORE ME THIS 15th DAY OF September 2011 APPEARED NORM MCKIBBEN, MANAGING PARTNER FOR HIGH RIDGE PROPERTY, LLC, TO ME PERSONALLY KNOWN, WHO ACKNOWLEDGED THE FOREGOING PARTITIONING OF LAND TO BE A FREE AND VOLUNTARY ACT AND DEED.
WITNESS MY HAND AND OFFICIAL SEAL THIS 15th DAY OF September 2011.
[Signature] Notary Public for the State of Washington, Residing in Walla Walla, WA



USKH SHARED VISION. UNIFIED APPROACH. Architecture • Engineering Land Surveying • Planning Environmental Services
5 North Cobble Walla Walla, WA 99362 (509) 522-4843
REGISTERED PROFESSIONAL LAND SURVEYOR
OREGON JULY 26, 1988 PAUL W.F. TOMKINS 2360
Date Stamped: 9/15/11

Project: A REPEAT OF PARCEL 3, PART. PLAT 2010-26 OF MAP 5N 35, BEING LOCATED IN THE NE 1/4, AND THE NW 1/4, THE SE 1/4 AND THE SW 1/4 OF SEC. 8, AND IN THE SOUTH 1/2 OF THE SW 1/4 OF SEC. 4, THE NW 1/4 AND SW 1/4 OF SEC. 9, AND THE NW 1/4 OF THE NE 1/4 OF SEC. 17, T5N, R35E, W.M., UMATILLA CO. OR
Client: NORM MCKIBBEN SEVIM VINEYARDS 83501 LOWER DRY, CR. RD. MILTON FRESHWATER, OR.

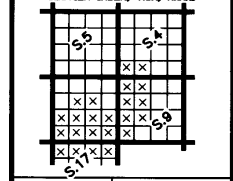


Table with columns: Project Mgr., PWPT, Drawn, PWPT, Checked, GEF, Date, 07-25-11, Scale, 1"= 600', CAD File: HIGH RIDGE PART PLAT 2011.DWG, Sheet Contents: HIGH RIDGE PART PLAT 2011.DWG, Sheet No.: 2 OF 2

FILE: I:\1332700\SURVEY\DWGS\HIGH RIDGE PART PLAT 2011.DWG PLOTTED: Sep 15, 2011 - 9:40:01 AM (Paul Tomkins)

RECEIVED Umatilla County Surveys: Date 10-11 Rec'd By: KA 11-15-R