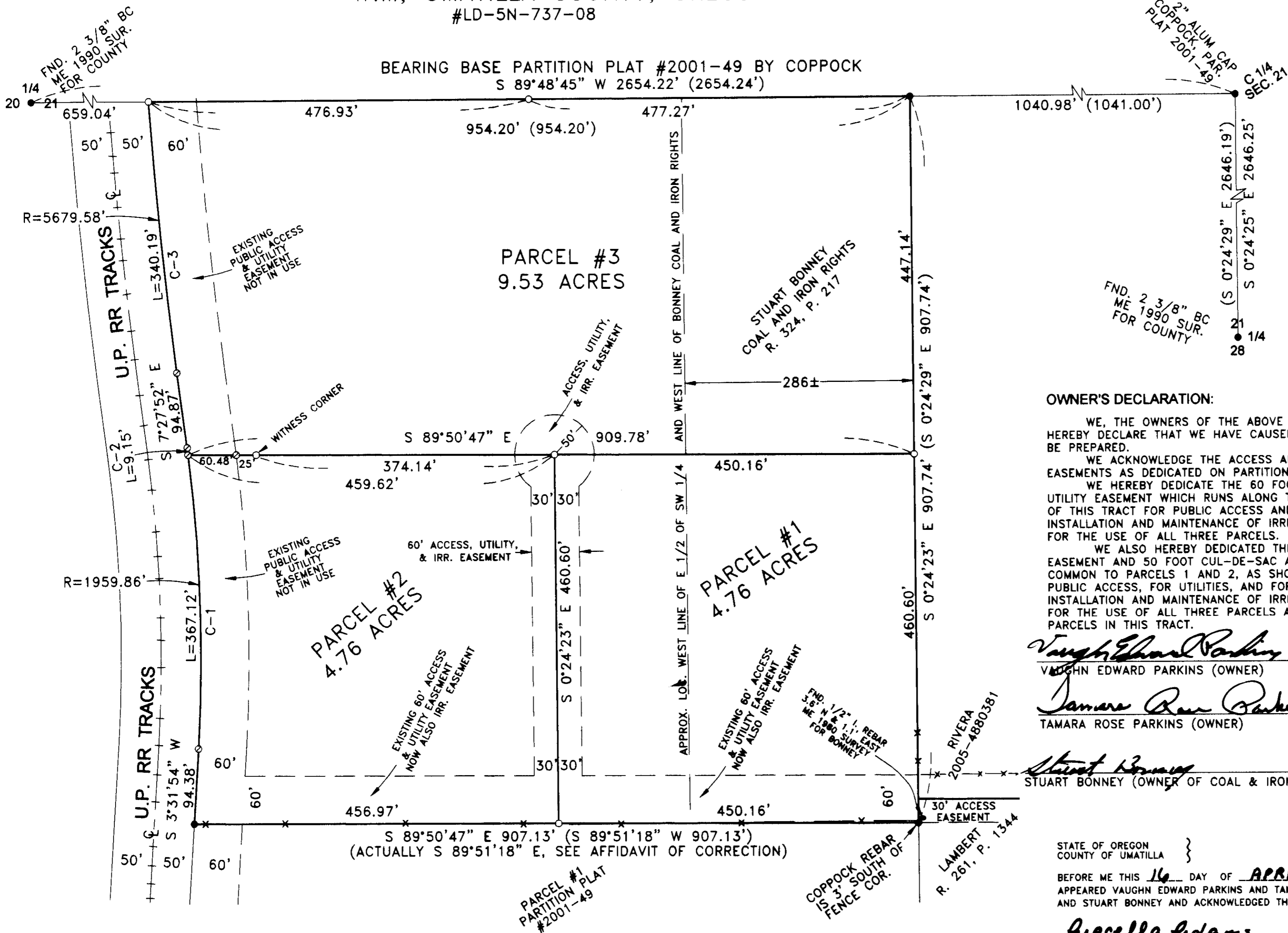


PARTITION PLAT 2009-16

A REPLAT OF PARCEL #2, PARTITION PLAT #2001-49
 IN SW 1/4, SEC. 21, T 5 N, R 28 E,
 W.M., UMATILLA COUNTY, OREGON
 #LD-5N-737-08

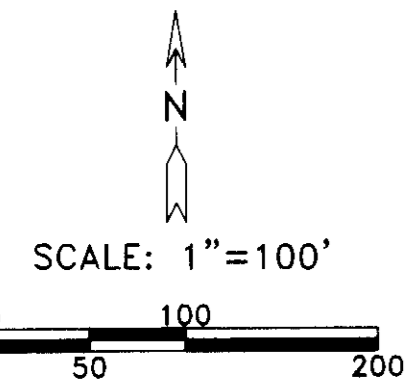
BEARING BASE PARTITION PLAT #2001-49 BY COPPOCK
 S 89°48'45" W 2654.22' (2654.24')



LEGEND:
 ● FOUND 5/8" IRON REBAR SET BY COPPOCK IN PARTITION PLAT #2001-49, UNLESS NOTED OTHERWISE
 ○ SET 5/8"X30" IRON REBAR WITH PLASTIC CAP #951
 ⊙ COMPUTED FROM PARTITION PLAT 2001-49.
 (000) OF RECORD, PART. PLAT #2001-49 BY COPPOCK

CURVE TABLE:

#	RADIUS	ARC.	DELTA	CHORD
C-1	1959.86'	367.12'	10°43'57"	N 1°50'05" W 366.58'
C-2	1959.86'	9.15'	0°16'03"	N 7°20'05" W 9.15'
C-3	5679.58'	340.19'	3°25'55"	N 5°45'09" W 340.14'



OWNER'S DECLARATION:

WE, THE OWNERS OF THE ABOVE DESCRIBED LAND, HEREBY DECLARE THAT WE HAVE CAUSED THIS PLAT TO BE PREPARED.
 WE ACKNOWLEDGE THE ACCESS AND UTILITY EASEMENTS AS DEDICATED ON PARTITION PLAT 2001-49.
 WE HEREBY DEDICATE THE 60 FOOT ACCESS AND UTILITY EASEMENT WHICH RUNS ALONG THE SOUTH LINE OF THIS TRACT FOR PUBLIC ACCESS AND FOR THE INSTALLATION AND MAINTENANCE OF IRRIGATION PIPE LINES FOR THE USE OF ALL THREE PARCELS.
 WE ALSO HEREBY DEDICATED THE 60 FOOT WIDE EASEMENT AND 50 FOOT CUL-DE-SAC ALONG THE LINE COMMON TO PARCELS 1 AND 2, AS SHOWN, FOR A PUBLIC ACCESS, FOR UTILITIES, AND FOR THE INSTALLATION AND MAINTENANCE OF IRRIGATION PIPE LINES FOR THE USE OF ALL THREE PARCELS AND ANY FUTURE PARCELS IN THIS TRACT.

Vaughn Edward Parkins
 VAUGHN EDWARD PARKINS (OWNER)
Tamara Rose Parkins
 TAMARA ROSE PARKINS (OWNER)

Stuart Bonney
 STUART BONNEY (OWNER OF COAL & IRON RIGHTS AS SHOWN)

STATE OF OREGON }
 COUNTY OF UMATILLA }

BEFORE ME THIS 16 DAY OF APRIL, 2009
 APPEARED VAUGHN EDWARD PARKINS AND TAMARA ROSE PARKINS AND STUART BONNEY AND ACKNOWLEDGED THE FOREGOING DEDICATION.

Gracella Adams
 NOTARY PUBLIC FOR OREGON
 PRINTED NAME Gracella Adams
 COMMISSION NO. 406170
 MY COMMISSION EXPIRES 07-15-10

THIS IS AN EXACT COPY: *G. Dennis Edwards*
 G. DENNIS EDWARDS

APPROVALS:

UMATILLA COUNTY SURVEYOR
 APPROVED THIS 20 DAY OF May, 2009.
David H. Kline
 UMATILLA COUNTY SURVEYOR

HERMISTON IRRIGATION DISTRICT
 APPROVED THIS 20th DAY OF JAN, 2009.
Charles W. Slope
 MANAGER

UMATILLA COUNTY PLANNING DEPARTMENT
 APPROVED THIS 21st DAY OF May, 2009.
Lucy J. Malhotra
 UMATILLA COUNTY PLANNING DIRECTOR

UMATILLA COUNTY TAX COLLECTOR
 TAXES ARE PAID IN FULL
 APPROVED THIS 20th DAY OF May, 2009.
Bettina Enright by Kristin Chanard
 UMATILLA COUNTY TAX COLLECTOR

STATE OF OREGON, }
 COUNTY OF UMATILLA }
 I certify that this instrument was received and recorded
 ON May 26, 2009
 at 11:30 o'clock Am., in the record of
 PLATS of said County.
 YEAR NUMBER Slide
 2009 16

OFFICE OF COUNTY RECORDS
 By: JEAN HEMPHILL Records Officer
 Fees \$ 50.00 No. 2009-5510510

SURVEYOR'S CERTIFICATE:

I, G. DENNIS EDWARDS, AM A REGISTERED SURVEYOR OF THE STATE OF OREGON AND HAVE MARKED WITH LEGAL MONUMENTS THE LAND SHOWN ON THIS PLAT.
 THIS TRACT WAS SURVEYED BY JUDD COPPOCK IN PARTITION PLAT 2001-49 AND THE BEARING ARE BASED ON THAT PARTITION PLAT. I FOUND ALL OF COPPOCK'S MONUMENTS EXCEPT THE NW CORNER. I SET A WITNESS CORNER 85.48 FEET EAST OF THE SW CORNER OF PARCEL 1 BECAUSE OF VERY THICK BRUSH AND TREES.
 THIS SURVEY WAS CONDUCTED WITH A TOPCON HIPER + G.P.S. IN REAL TIME KINEMATIC. DESCRIPTION: PARCEL 2, PARTITION PLAT 2001-49 IN THE SW 1/4 OF SECTION 21, TOWNSHIP 5 NORTH, RANGE 28 EAST, WILLAMETTE MERIDIAN, UMATILLA COUNTY, OREGON. DESCRIBED IN INSTRUMENT # 2008-5370003 UMATILLA COUNTY DEED RECORDS.

REGISTERED PROFESSIONAL LAND SURVEYOR

G. Dennis Edwards
 OREGON
 JULY 16, 1971
 G. DENNIS EDWARDS
 9 5 1
 RENEWS 12/31/2009

JOB# S0808111
 EDWARDS SURVEYING P.O. BOX 763
 541-567-3336 HERMISTON, OREGON 97838
 DRAWN BY JMC
 RECEIVED BY

Umatilla County Surveyor
 Date 6-09
 Rec'd by KK
 No. 09-85-B