

PARTITION PLAT NO. 2008-05

A PARTITION OF PARCEL 1 OF UMATILLA COUNTY PARTITION PLAT NO. 2007-48, LOCATED IN THE NORTHWEST QUARTER OF SECTION 16, TOWNSHIP 2 NORTH, RANGE 32 EAST, W.M., CITY OF PENDELTON, UMATILLA COUNTY, OREGON. FEBRUARY, 2008

APPROVALS

EXAMINED AND APPROVED THIS 20 DAY OF March 2008.

LAND PARTITION APPROVAL NO. MP08-01
Michael H. Muller
CITY OF PENDELTON PLANNER

EXAMINED AND APPROVED THIS 20 DAY OF March 2008.

[Signature]
CITY OF PENDELTON SURVEYOR

EXAMINED AND APPROVED THIS 21 DAY OF March 2008.

David H. Hill
UMATILLA COUNTY SURVEYOR

TAXES ARE PAID IN FULL, THIS 21 DAY OF March 2008.

Patricia Annand
UMATILLA COUNTY TAX COLLECTOR

RECORDING INFORMATION:
UMATILLA COUNTY OFFICE OF RECORDS:

STATE OF OREGON,
COUNTY OF UMATILLA }
I certify that this instrument was received and recorded

ON March 24, 2008
at 10:05 o'clock Am., in the record of
PLATS of said County.
YEAR NUMBER Slide
2008 05

OFFICE OF COUNTY RECORDS
By: JEAN HEMPHILL, Records Officer

Fees \$ 50.00 No. 2008-5340354

OWNERS DECLARATION & DEDICATION

DUSTY R. PACE, BUYER, AND UPPER COLUMBIA MISSION SOCIETY OF SEVENTH-DAY ADVENTISTS, A WASHINGTON CORPORATION, SELLER, DO HEREBY ACKNOWLEDGE THIS PARTITION PLAT WAS PREPARED WITH OUR KNOWLEDGE AND CONSENT, IN ACCORDANCE WITH ORS CHAPTER 92, AS REVISED, AND THE CITY OF PENDELTON AND UMATILLA COUNTY DEVELOPMENT ORDINANCES.

BUYER AND SELLER HEREBY DEDICATE THE NEW PUBLIC UTILITY EASEMENT IDENTIFIED IN NOTE "B". BUYER AND SELLER HEREBY ACKNOWLEDGE AND AGREE THAT NO PARKING, STRUCTURES, TREES, SHRUBS OR FENCES ARE ALLOWED IN THE NEW EASEMENT DEDICATED, AS WELL AS IN THE EXISTING EASEMENTS.

Dusty R. Pace
DUSTY R. PACE, BUYER

STATE OF OREGON
COUNTY OF UMATILLA

THIS INSTRUMENT WAS ACKNOWLEDGED BEFORE ME ON THIS 13 DAY OF March 2008 BY DUSTY R. PACE

Dawn M. Jubbs
NOTARY PUBLIC FOR THE STATE OF OREGON

MY COMMISSION NUMBER: 385199

MY COMMISSION EXPIRES: 10-14-2008

UPPER COLUMBIA MISSION SOCIETY OF SEVENTH-DAY ADVENTISTS, SELLER, BY:
Doug Johnson Vice-President
Vivonne M. House Asst. Secretary

STATE OF WASHINGTON
COUNTY OF Spokane

THIS INSTRUMENT WAS ACKNOWLEDGED BEFORE ME ON THIS 17th DAY OF March 2008

UPPER COLUMBIA MISSION SOCIETY OF SEVENTH-DAY ADVENTISTS,
BY: Doug Johnson Vice-President
Vivonne M. House Asst. Secretary

BY: Vivonne E. Blankenship
NOTARY PUBLIC FOR THE STATE OF WASHINGTON

MY COMMISSION NUMBER: 116900

MY COMMISSION EXPIRES: 2-22-2010



LEGEND

- SET 5/8" BY 30" IRON REBAR WITH 1 1/4" RED PLASTIC CAP MARKED "OR PLS 1106 WA PLS 17372".
- ⊙ FOUND 5/8" IRON REBAR WITH 1 1/4" RED PLASTIC CAP MARKED "OR PLS 1106 WA PLS 17372" FROM PARTITION PLAT NO. 2007-48.
- x CALCULATED POINT ONLY, NOT SET OR FOUND.
- L1 LINE NUMBER OF LINE TOO SHORT TO ANNOTATE--SEE LINE TABLE.

NOTES: FOR ADDITIONAL BOUNDARY AND CONTROL INFORMATION, SEE SURVEYS NO. 95-065-C, 98-203-C, PARTITION PLATS NO. 2003-05 AND 2004-25 AND SURVEY NO. 06-482-B. COMMON DIMENSIONS SHOWN ON THIS PARTITION PLAT SURVEY ARE IDENTICAL WITH THOSE OF PARTITION PLAT NO. 2004-25 AND PARTITION PLAT NO. 2007-48.

SURVEYORS CERTIFICATE AND NARRATIVE:

I HEREBY CERTIFY THAT I HAVE CORRECTLY SHOWN AND MONUMENTED PARCELS 1 AND 2 OF THIS PARTITION PLAT IN ACCORDANCE WITH ORS CHAPTER 92, AS REVISED, AND THE CITY OF PENDELTON AND UMATILLA COUNTY DEVELOPMENT ORDINANCES.

PARCEL BOUNDARIES ARE MONUMENTED AS SHOWN.
FOR ADDITIONAL BOUNDARY CONTROL REFERENCE, SEE SURVEYS NO. 95-065-C, 98-203-C, AND PARTITION PLATS NO. 2003-05, 2004-25, AND 2007-48.

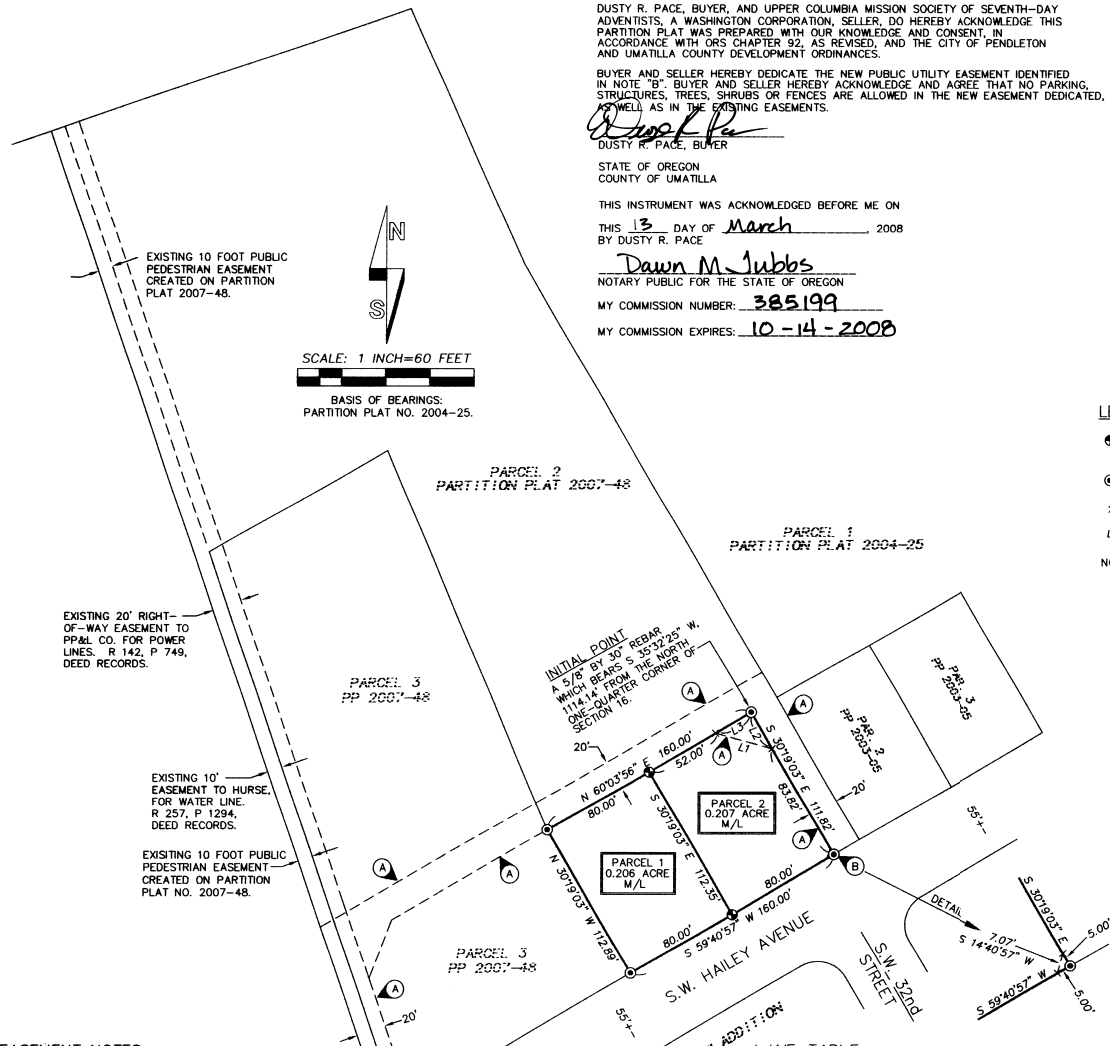
THE SURVEY WAS MADE WITH A 2 PERSON CREW USING TRIMBLE GEODETIC GPS RECEIVERS OPERATED IN REAL TIME KINEMATIC MODE. CORNER TIES AND NEW MONUMENT SETS WERE VERIFIED BY REDUNDANT OBSERVATIONS.

REAL PROPERTY DESCRIPTION

A TRACT OF LAND LOCATED IN THE NORTHWEST QUARTER OF SECTION 16, TOWNSHIP 2 NORTH, RANGE 32 EAST, W.M., CITY OF PENDELTON, UMATILLA COUNTY, OREGON, DESCRIBED AS:
PARCEL 1 OF UMATILLA COUNTY PARTITION PLAT 2007-48, RECORDED DECEMBER 27, 2007 AS INSTRUMENT NO. 2007-5300258, UMATILLA COUNTY OFFICE OF RECORDS.

William R. Wells
WILLIAM R. WELLS, PLS

I CERTIFY THIS IS AN EXACT COPY OF
PARTITION PLAT NO. 2008-05
William R. Wells
WILLIAM R. WELLS, PLS



LINE NO.	BEARING	DISTANCE
L1	S 75°07'34" E	39.73'
L2	S 30°19'03" E	28.00'
L3	N 60°03'56" E	28.00'

NOTE:
ALL PARCELS CREATED BY THIS PARTITION PLAT ARE BOUND BY MINOR PARTITION AGREEMENT AS RECORDED ON MARCH 21, 2008, AS INSTRUMENT NO. 2006-4970681, OFFICE OF COUNTY RECORDS, FOR PARTICIPATION IN A FUTURE LOCAL IMPROVEMENT DISTRICT FOR CONSTRUCTION OF S.W. HAILEY AVENUE TO A CITY COLLECTOR STANDARD.

EASEMENT NOTES:

- Ⓐ INDICATES EXISTING EASEMENT FOR PUBLIC UTILITIES, INGRESS-EGRESS AND FIRE APPARATUS AND PRIVATE INGRESS-EGRESS AND UTILITIES APPURTENANT TO NEW PARCELS 1 AND 2 AND EXISTING PARCELS 2 AND 3 OF PARTITION PLAT NO. 2007-48. THIS EASEMENT WAS CREATED ON PARTITION PLAT NO. 2007-48.
- Ⓑ INDICATES NEW PUBLIC UTILITY EASEMENT.

REGISTERED PROFESSIONAL LAND SURVEYOR

William R. Wells

OREGON
JULY 22, 1977
WILLIAM R. WELLS
1106
RENEWS 6/30/08

WILLIAM R. WELLS, PLS
2602 N.E. RIVERSIDE PLACE
P.O. BOX 1696
PENDLETON, OR 97801
PHONE: (541) 276-6362

DATE: 01/08 DR. BY: DMT
CK BY: WRW NO. 07-1143

PROJECT: \PAGEPP2008P1

PARTITION PLAT FOR:
DUSTY R. PACE

LOCATED IN THE NW 1/4 OF SECTION 16, T2N., R32E., W.M., CITY OF PENDELTON, UMATILLA COUNTY, OREGON.

4-08
kk