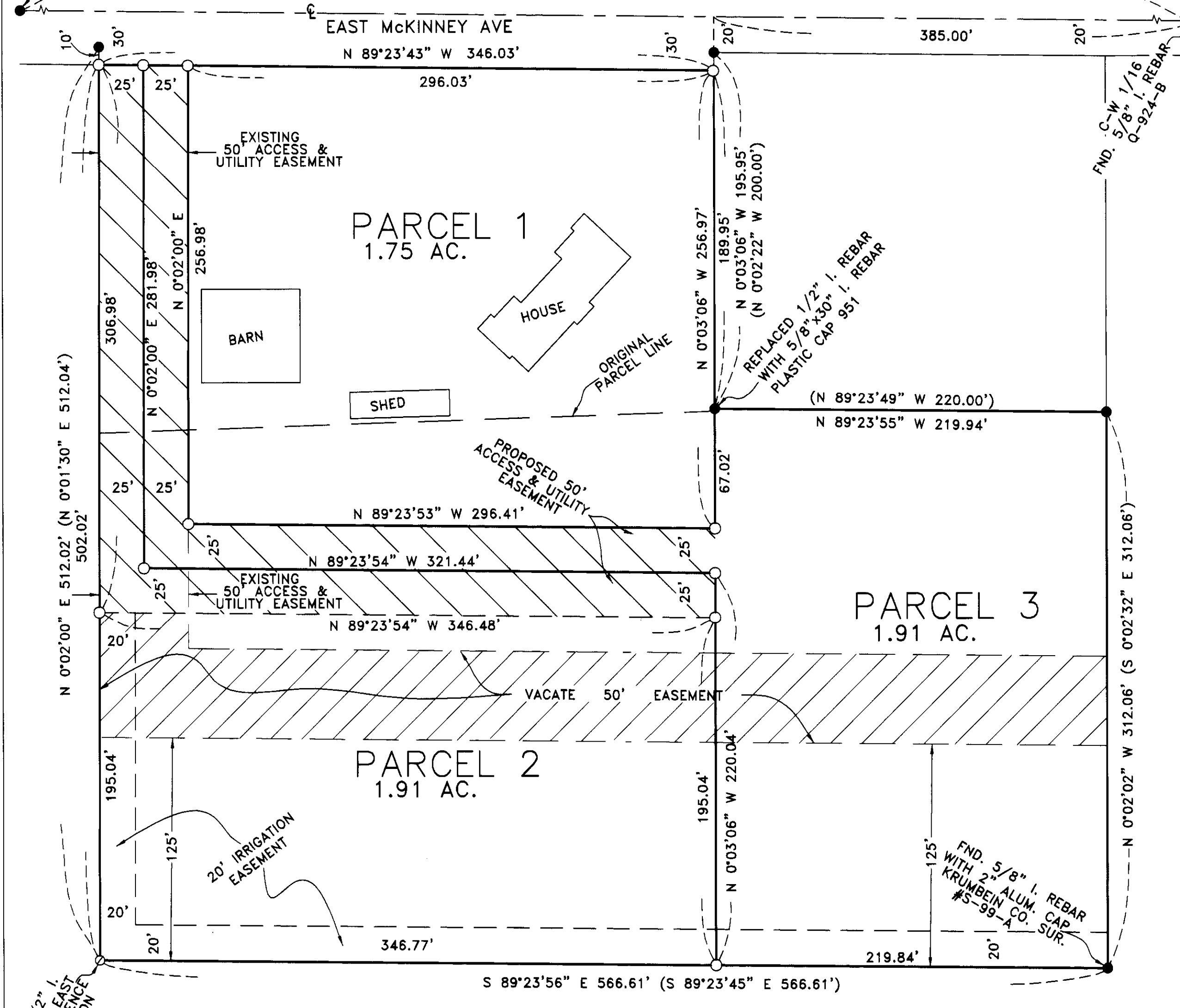


2006-32

PARTITION PLAT 2006-32

A REPLAT OF PARCELS 1 & 2, PARTITION PLAT 1990-7,
IN NW 1/4, SW 1/4, SEC. 14, T 4 N, R 28 E, W.M.,
UMATILLA COUNTY, OREGON

BEARING BASE PARTITION PLAT 1990-7

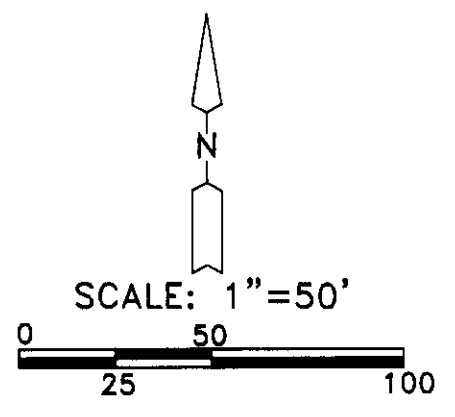


1/4
15
14
FND. 2 1/2" BRASS CAP KRUMBEIN 1980

FND. 1/2" I. REBAR 0.4' EAST MOVED BY FENCE CONSTRUCTION

LEGEND:

- FOUND 1/2" IRON REBAR SET BY ME IN PARTITION PLAT 1990-7, UNLESS NOTED OTHERWISE
- SET 5/8"X30" IRON REBAR WITH PLASTIC CAP #951
- (000) OF RECORD. PARTITION PLAT 1990-7
- 50' ACCESS & UTILITY EASEMENT VACATED ON THIS PLAT
- 50' ACCESS & UTILITY EASEMENT, EXISTING & DEDICATED ALSO DEDICATED FOR IRRIGATION PURPOSES ON THIS PLAT



SURVEYOR'S NARRATIVE & CERTIFICATE:

I, G. DENNIS EDWARDS, AM A REGISTERED SURVEYOR OF THE STATE OF OREGON AND HAVE MARKED WITH PROPER MONUMENTS THE LAND SHOWN ON THIS PLAT. I SURVEYED THIS PROPERTY IN PARTITION PLAT 1990-7. THIS SURVEY AND THE BEARINGS ARE BASED ON THAT PARTITION.

DESCRIPTION: PARCELS 1 AND 2 OF PARTITION PLAT 1990-7 IN THE NW 1/4 OF THE SW 1/4 OF SECTION 14, TOWNSHIP 4 NORTH, RANGE 28 EAST, WILLAMETTE MERIDIAN, UMATILLA COUNTY, OREGON. CONTAINING 5.57 ACRES.

REGISTERED PROFESSIONAL LAND SURVEYOR

G. Dennis Edwards

OREGON
JULY 16, 1971
G. DENNIS EDWARDS
9 5 1
RENEWS 12/31/2007

OWNER'S DECLARATION:

WE, THE OWNERS OF THE ABOVE DESCRIBED LAND, HEREBY DECLARE THAT WE HAVE CAUSED THIS PLAT TO BE PREPARED.

WE ACKNOWLEDGE THE 50 FOOT ACCESS AND UTILITY EASEMENT WHICH RUNS FROM 25 FEET EAST OF THE NW CORNER OF PARCEL 1 SOUTH TO A POINT WHICH LIES 150 FEET NORTH OF THE SW CORNER OF PARCEL 2 THENCE EAST TO THE EAST LINE OF WHAT IS NOW PARCEL 3.

WE, AFTER NOTIFYING ALL UTILITY COMPANIES, HEREBY VACATE THAT PORTION OF THE ABOVE DESCRIBED 50 FOOT EASEMENT WHICH RUNS WEST THROUGH PARCELS 3 AND 2 AND NORTH TO A POINT WHICH LIES 50 FEET SOUTH OF THE SOUTH LINE OF PARCEL 1.

WE HEREBY DEDICATE AN ACCESS AND UTILITY EASEMENT FOR THE USE OF ALL THREE PARCELS THE NORTH LINE OF WHICH IS COINCIDENTAL WITH THE SOUTH LINE OF PARCEL 1. SEE LEGEND FOR CROSS HATCHING OF VACATED AREA.

WE HEREBY DEDICATE A 20 FOOT EASEMENT FOR IRRIGATION PURPOSES OVER THE SOUTH 20 FEET OF PARCELS 2 AND 3 AND OVER THE WEST 20 FEET OF THE SOUTH 195.04 FEET OF SAID PARCEL 2 FOR THE USE OF ALL THREE PARCELS. WE ALSO DESIGNATE THE ABOVE DESCRIBED 50 FOOT ACCESS AND UTILITY EASEMENTS FOR IRRIGATION PURPOSES.

Gregory S. Cook
GREGORY S. COOK

Jeanette G. Cook
JEANETTE G. COOK

STATE OF OREGON }
COUNTY OF UMATILLA }
SUBSCRIBED, AND SWORN BEFORE ME ON THIS
27 DAY OF July, 2006
Aracella Adams
NOTARY PUBLIC FOR OREGON
PRINTED NAME Aracella Adams
COMMISSION NO. 406170
MY COMMISSION EXPIRES 07-15-10

APPROVALS

UMATILLA COUNTY SURVEYOR
APPROVED THIS 28 DAY OF July, 2006
David H. Kline
UMATILLA COUNTY SURVEYOR

CITY OF HERMISTON PLANNING COMMISSION
APPROVED THIS 19 DAY OF July, 2006
Margaret Siegel
CHAIRMAN

HERMISTON IRRIGATION DISTRICT
APPROVED THIS 27 DAY OF July, 2006
Edward Wilcox
MANAGER

UMATILLA COUNTY TAX COLLECTOR
PROPERTY TAXES ARE PAID IN FULL.
APPROVED THIS 6th DAY OF Dec., 2006
Shonda Schultz
UMATILLA COUNTY TAX COLLECTOR

STATE OF OREGON }
COUNTY OF UMATILLA }
I certify that this instrument was received and recorded
ON December 6, 2006
at 11:55 o'clock Am., in the record of
PLATS of said County.
YEAR NUMBER Slide
2006 32

OFFICE OF COUNTY RECORDS
By: JEAN HEMPHILL...Records Officer
Fees \$ 50.00 No. 2006-5110753

THIS IS AN EXACT COPY: *G. Dennis Edwards*
G. DENNIS EDWARDS

JOB# S0503036
EDWARDS SURVEYING P.O. BOX 763
541-567-3336 HERMISTON, OREGON 97838
DRAWN BY NJF/JMC

12-06
KR
06-620-B