

2001-48

PARTITION PLAT 2001-48

IN NE 1/4, SECTION 16, T 5 N, R 28 E, W.M.,
UMATILLA COUNTY, OREGON

BEARING BASE MY 1989 SURVEY FOR UMATILLA COUNTY
N 88°47'53" E 2636.93' [2636.89']

SURVEYOR'S NARRATIVE:

I, G. DENNIS EDWARDS, AM A REGISTERED SURVEYOR OF THE STATE OF OREGON AND HAVE MARKED WITH LEGAL MONUMENTS THE LAND DESCRIBED BELOW.
THE BEARINGS AND THE SECTION SUBDIVISION ARE BASED ON MY 1989 AREA ONE COUNTY MONUMENTATION SURVEY.
DESCRIPTION: BEGINNING AT THE S.W. CORNER OF THE E 1/2 OF THE NE 1/4 OF THE NE 1/4 OF SECTION 16, T 5 N R 28 E, WILLAMETTE MERIDIAN, UMATILLA COUNTY, OREGON, AND RUNNING; THENCE N 0° 06' 43" E ALONG THE WEST LINE OF SAID E 1/2 OF THE NE 1/4 OF THE NE 1/4 OF SAID SECTION 16, A DISTANCE OF 322.58 FEET TO A POINT ON THE SOUTH RIGHT OF WAY LINE OF COUNTY ROAD #1286; THENCE N 66° 10' 00" E ALONG SAID RIGHT OF WAY LINE 229.09 FEET; THENCE CONTINUING ALONG SAID RIGHT OF WAY LINE N 61° 41' 37" E 511.54 FEET TO A POINT ON THE EAST LINE OF SAID EAST HALF; THENCE S 0° 05' 41" W ALONG SAID EAST LINE 410.91 FEET TO A POINT ON THE CENTER LINE OF VACATED COUNTY ROAD #709; THENCE S 55° 15' 39" W ALONG SAID CENTER LINE 367.84 FEET; THENCE CONTINUING ALONG SAID CENTER LINE S 45° 59' 18" W 45.23 FEET TO A POINT ON THE SOUTH LINE OF SAID EAST HALF; THENCE S 88° 59' 00" W ALONG SAID SOUTH LINE 325.13 FEET TO THE POINT OF BEGINNING. CONTAINING 6.29 ACRES.

REGISTERED PROFESSIONAL LAND SURVEYOR
G. Dennis Edwards
OREGON
JULY 16, 1971
G. DENNIS EDWARDS
RENEWS 12/31/2001

OWNER'S DECLARATION:

WE, THE OWNERS OF THE LAND DESCRIBED ABOVE, HEREBY DECLARE THAT WE HAVE CAUSED THIS PLAT TO BE PREPARED.
WE ACKNOWLEDGE THE 20 FOOT CITY SEWER LINE EASEMENT WHICH RUNS ACROSS THIS TRACT.
WE HEREBY DEDICATE A 30 FOOT EASEMENT FOR INGRESS AND EGRESS AND UTILITIES ALONG THE LINE COMMON TO PARCELS 1 AND 3 AND PART OF PARCEL 2 AS SHOWN. THIS IS FOR THE BENEFIT OF ALL THREE PARCELS.
WE ALSO DEDICATE A 10 FOOT UTILITY EASEMENT ALONG THE EAST SIDE OF PARCEL 1 AS SHOWN.
Scott Rada
SCOTT RADA
Staci Rada
STACI RADA

OFFICIAL SEAL
LUCAS A WAGNER
NOTARY PUBLIC - OREGON
COMMISSION NO. 324998
MY COMMISSION EXPIRES JULY 6, 2003

LEGEND:

- MONUMENTS FOUND AS NOTED
- SET 5/8"X30" IRON REBAR WITH PLASTIC CAP #951
- (000) OF RECORD, COPPOCK 1999 SURVEY FOR U.E.C.
- [000] OF RECORD, MY 1989 AREA #1 COUNTY MON. SURVEY

STATE OF OREGON, }
COUNTY OF UMATILLA }
I certify that this instrument was received and recorded

APPROVALS:

ON October 22, 2001
at 9:10 o'clock Am., in the record of
PLATS of said County.
YEAR NUMBER Slide
2001 48

APPROVED THIS 16 DAY OF October, 2001.
David Hille
UMATILLA COUNTY SURVEYOR

OFFICE OF COUNTY RECORDS

By: GEORGIA DUNAWAY, Records Officer
Fees \$ 50.00 No. 2001-3990175

APPROVED THIS 16 DAY OF October, 2001.
Beth Jane Stearns
CITY OF UMATILLA PLANNING COMMISSION

TAXES ARE PAID IN FULL
THIS 22 DAY OF October, 2001.

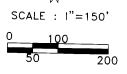
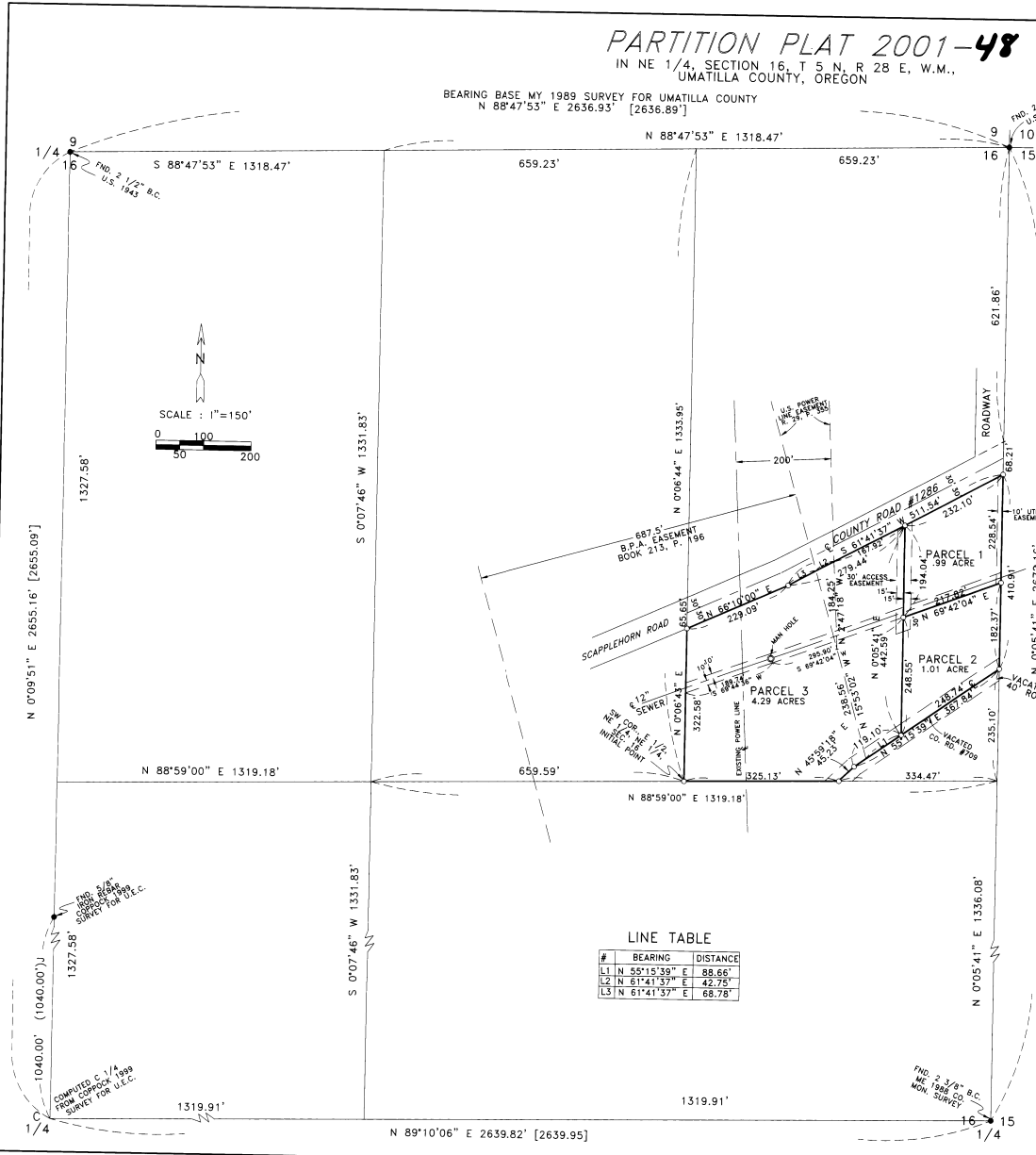
James J. Edwards
UMATILLA COUNTY COLLECTOR

THIS IS AN EXACT COPY: *G. Dennis Edwards*
G. DENNIS EDWARDS

JOB# S0012236
EDWARDS SURVEYING P.O. BOX 763
541-567-3336 HERMISTON, OREGON 97838
DRAWN BY NJF

LINE TABLE

#	BEARING	DISTANCE
L1	N 55° 15' 39" E	88.66'
L2	N 61° 41' 37" E	42.75'
L3	N 61° 41' 37" E	68.78'



9
16
END. 2 1/2" B.C.
U.S. 1943

FND. 3 3/8" B.C.
ME 1989 50
MON. SURVEY

AND 8 1/2" B.C.
U.S. 1943
COMPUTED FROM COPPOCK SURVEY FOR U.E.C.

1/4
1319.91'

N 89°10'06" E 2639.82' [2639.95]

N 0°05'41" E 1336.08'

N 88°59'00" E 1319.18'

N 88°59'00" E 1319.18'

S 0°07'46" W 1331.83'

1327.58'

N 0°09'51" E 2655.16' [2655.09']

659.23'

N 88°47'53" E 1318.47'

659.23'

9
10
15
FND. 2 1/2" B.C.
U.S. 1943

ROADWAY

ROADWAY

VACATED 40' ROAD

S.P.A. EASEMENT
BOOK 213, P. 196

EXISTING POWER LINE

NEW CORNER 1/4" MONUMENT POINT

MIN. HOLES

NEW CORNER 1/4" MONUMENT POINT

NEW CORNER 1/4" MONUMENT POINT

NEW CORNER 1/4" MONUMENT POINT

NEW CORNER 1/4" MONUMENT POINT

NEW CORNER 1/4" MONUMENT POINT

NEW CORNER 1/4" MONUMENT POINT

NEW CORNER 1/4" MONUMENT POINT

NEW CORNER 1/4" MONUMENT POINT

NEW CORNER 1/4" MONUMENT POINT