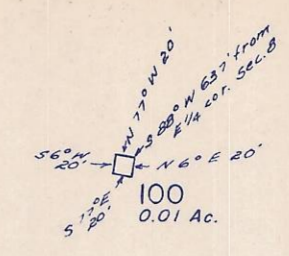


SE 1/4 Sec. 8 T.1S. R.32E.W.M.
UMATILLA COUNTY

IS 32 08D

1" = 200'

See Map IS 32



1" = 200'

2-4

2-16

2-1

See Map IS 32

See Map IS 32

Signed.....

CO. RD.

TO BE VACATED
300
6.14 Ac.

TO BE DEDICATED

Britt, Le Roy & Diana R.
311-490
P.O. Box 428
Pilot Rock, Or. 97137

200
19.68 Ac.

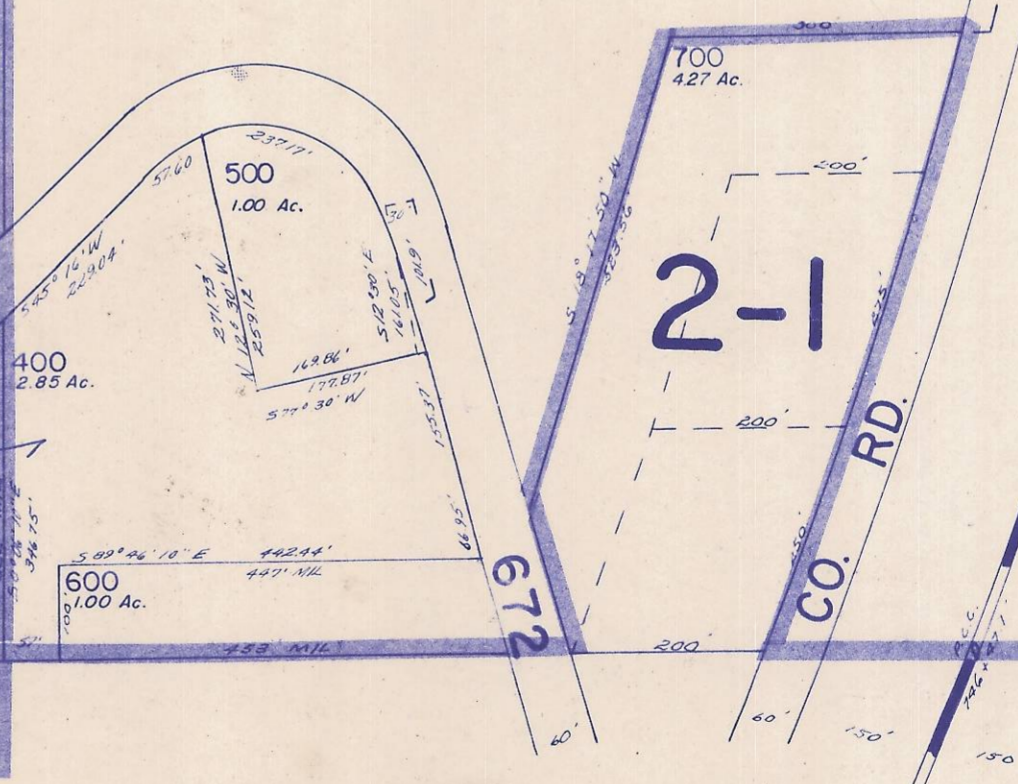
800A1

800A3
800A4

NO. 617

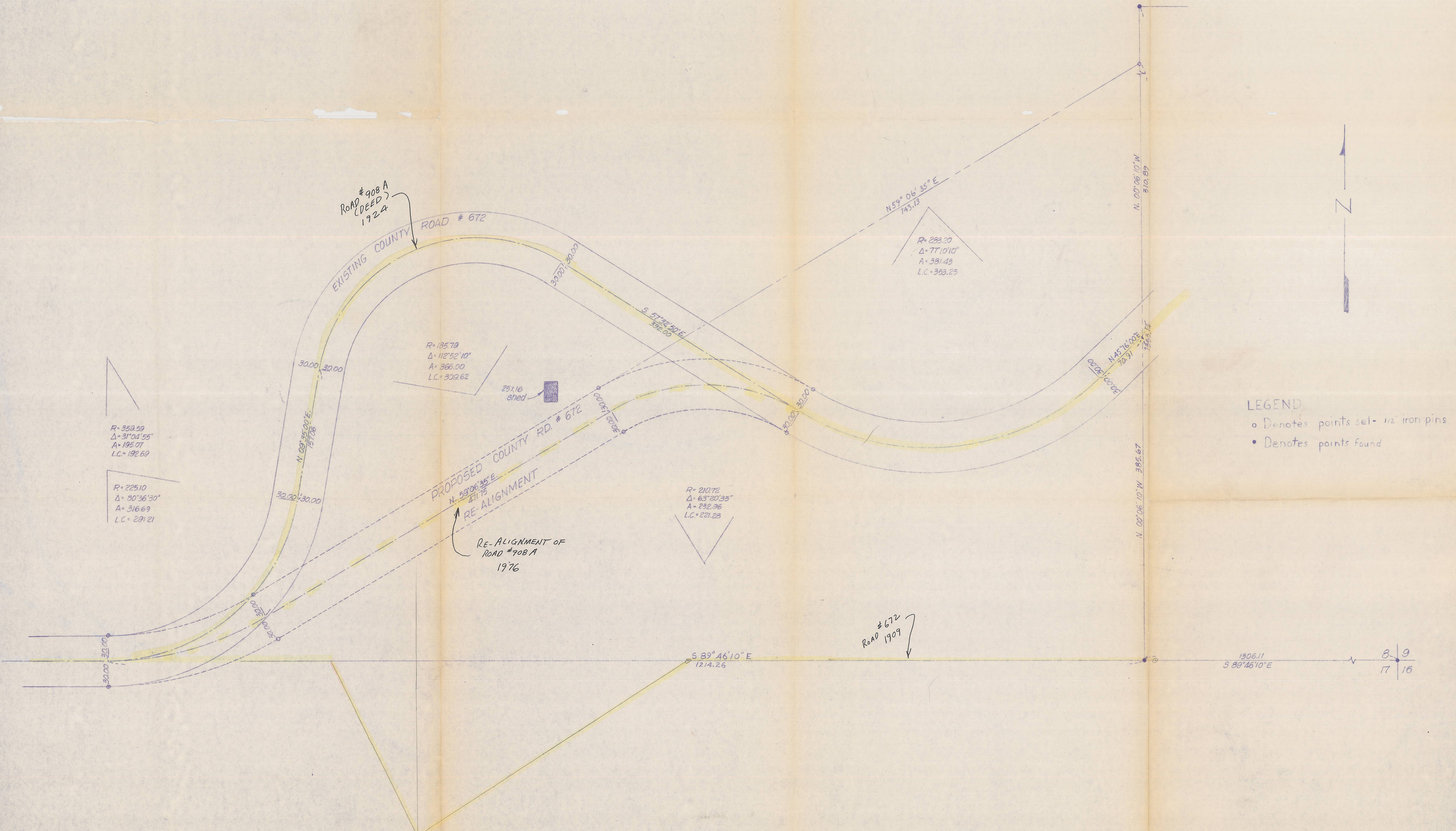
U.P.R.R.

8 9
17 16



See Map IS 32 17AA

IS 32 08D



$R = 359.59$
 $\Delta = 31^{\circ} 04' 55''$
 $A = 195.07$
 $L.C. = 192.69$

$R = 225.10$
 $\Delta = 50^{\circ} 36' 30''$
 $A = 316.69$
 $L.C. = 231.21$

$R = 135.79$
 $\Delta = 112^{\circ} 52' 10''$
 $A = 366.00$
 $L.C. = 302.62$

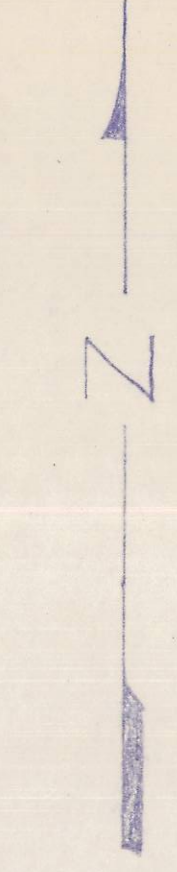
$R = 210.72$
 $\Delta = 63^{\circ} 20' 35''$
 $A = 232.96$
 $L.C. = 221.28$

$R = 283.20$
 $\Delta = 77^{\circ} 10' 10''$
 $A = 381.43$
 $L.C. = 353.25$

LEGEND

- o Denotes points set - 1/2 iron pins
- Denotes points found

N. 00° 06' 10" W 512.87
 N. 00° 06' 10" W 385.67



1306.11
 S 89° 46' 10" E
 8 9
 17 16

PROPERTY EXCHANGE SURVEY		WAYNE HARRIS CO. INC.	
REESER - BRITT		ENGINEERS-SURVEYORS PENDLETON, ORE.	
TAX LOT 300	SCALE DATE	DRN BY	CHK DWG NO.
SEC 8 T1S R32E 1/4M.	1"=50' 4-12-76	CT	180/76-508C