

INDEX OF SHEETS	
SHEET NO.	DESCRIPTION
1	Title Sheet
2	Typical Sections & Summary
3-8	Plan & Profile

Dwg. Nos. 1833 Oiling Details
 2094 Guard
 2106 Guide Posts

17942 }
 17943 } Br.*10446A
 14656 }

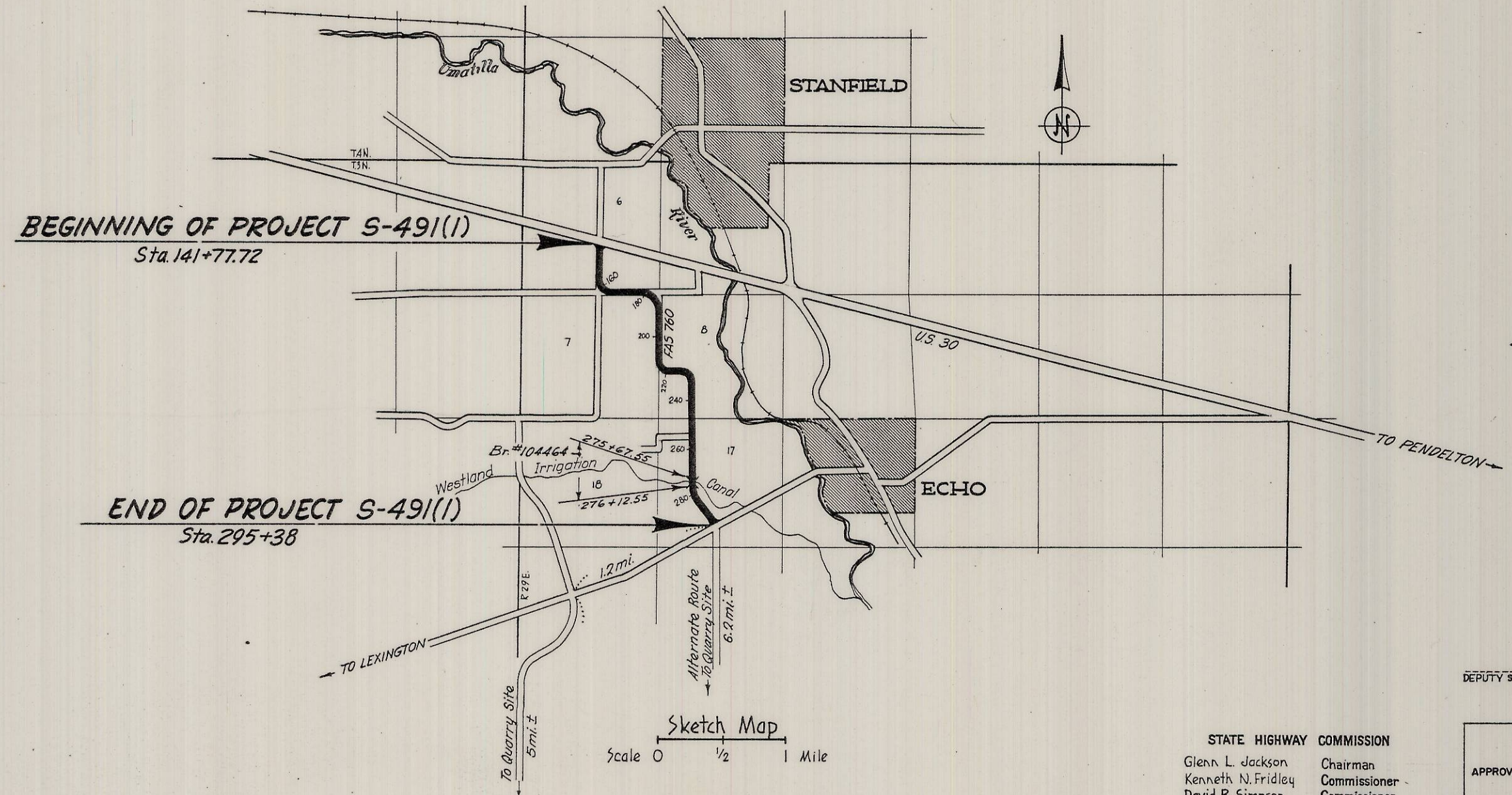
US 30 JCT-MEADOWS JCT. SEC.				
FAS 760				
UMATILLA COUNTY				
FED. ROAD Div. No.	STATE	PROJECT NUMBER	FISCAL YEAR	TOTAL SHEETS
8	OREGON	S-491(1)		See Index

STATE OF OREGON
 STATE HIGHWAY DEPARTMENT

PLANS FOR PROPOSED PROJECT
 GRADING, OILING & STRUCTURE

US 30 JCT-MEADOWS JCT. SECTION

FAS 760
 UMATILLA COUNTY
 AUG. 1962
 READV. SEPTEMBER 1962



- CONVENTIONAL SIGNS**
- State Line
 - County Line
 - City or Town Limits
 - Township Line
 - Section Line
 - Donation Land Claim Line
 - Fence Line
 - Guard Rail
 - (Unfenced Property or Right of Way Line)
 - Existing Roads
 - Trails
 - Base or Survey Line
 - Railroads
 - Retaining Wall
 - Culverts
 - Drop Inlet
 - Trolley Pole
 - Power Pole
 - Telephone or Telegraph Poles
 - Marsh
 - Irrigation Ditches
 - Bridges
 - Trees



G. S. Paxson
 DEPUTY STATE HIGHWAY ENGINEER

STATE HIGHWAY COMMISSION
 Glenn L. Jackson Chairman
 Kenneth N. Fridley Commissioner
 David B. Simpson Commissioner

DEPARTMENT OF COMMERCE
 BUREAU OF PUBLIC ROADS

APPROVED: _____

DIVISION ENGINEER DATE

S U M M A R Y

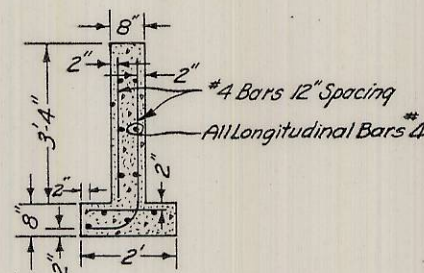
Length of Project 2,909 Miles

U.S. 30 JCT.-MEADOWS JCT. SECT.				SHEET No. 2
F.A.S. 760				
UMATILLA COUNTY				
FED. ROAD Div. No.	STATE	PROJECT NUMBER	FISCAL YEAR	TOTAL SHEETS
8	OREGON	S-491(I)		See Index

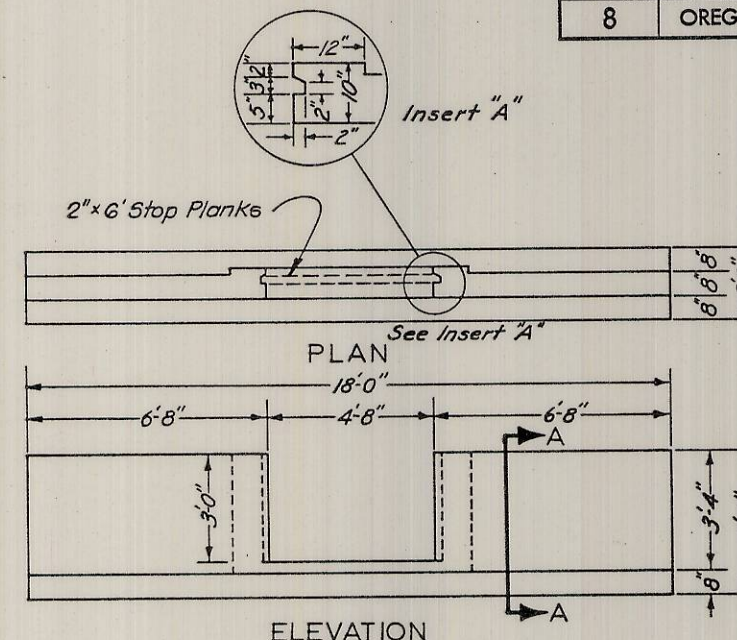
ITEM	UNIT	NET QUANT.	ALLOW.	TOTAL
Clearing and Grubbing	All	All		All
Drainage Excavation, Unclassified	Cu. Yd.	139	11	150
Special Borrow Excavation, Unclassified	" "	3,348	352	3,700
General Excavation, Unclassified	" "	27,458	2,742	30,200
Short Overhaul	Yd. Sta.	111,291	11,109	122,400
Long Overhaul	C-Yd. Sta.	10,379	1,021	11,400
Finishing Roadbed and Slopes	Mile	2.90		2.90
Finishing Berm for Flood Irrigation	" "	2.11	.29	2.40
12-inch Culvert Pipe	Lin. Ft.	138	12	150
18-inch " "	" "	140	14	154
24-inch " "	" "	52	8	60
36-inch " "	" "	140	14	154
48-inch Concrete Pipe	" "	24	4	28
36-inch Arch Type Corrugated Metal Pipe, Uncoated	" "	72	8	80
Class "A" Concrete in Headgate	Cu. Yd.	2.0		2.0
Metal Reinforcement in Headgate	Lb.	210	20	230
Metal Guard Rail	Lin. Ft.	75	5	80
Guide Posts, PW-1	One	125	15	140
Bracket Reflectors	One	24	2	26
Coarse Crushed Material in Base	Ton	25,403	2,547	27,950
3/4" O Material in Base	" "	5,238	562	5,800
Sprinkling	M-Gal.	888	112	1,000
Preparation of Base	Mile	2.90		2.90
3/4" O Material in Binder Course	Cu. Yd.	254	16	270
Furnishing and Placing Aggregates	" "	1665	85	1,750
MC 250 Asphalt	Ton	39	3	42
120-150 Asphalt	" "	125	5	130
RS-1 Asphalt	" "	35	2	37
Extra for Oiling Approaches	One	22	2	24
Remove old Bridge	All	All		All
Shoring, Cribbing, etc.	All	All		All
Structural Excavation	Cu. Yd.	225	10	235
Struct. Excav. Below Elevs. Shown	" "		20	20
Class "A" Concrete	All	All		All
Metal Reinforcement	All	All		All
Structural Steel	All	All		All

Roadwork

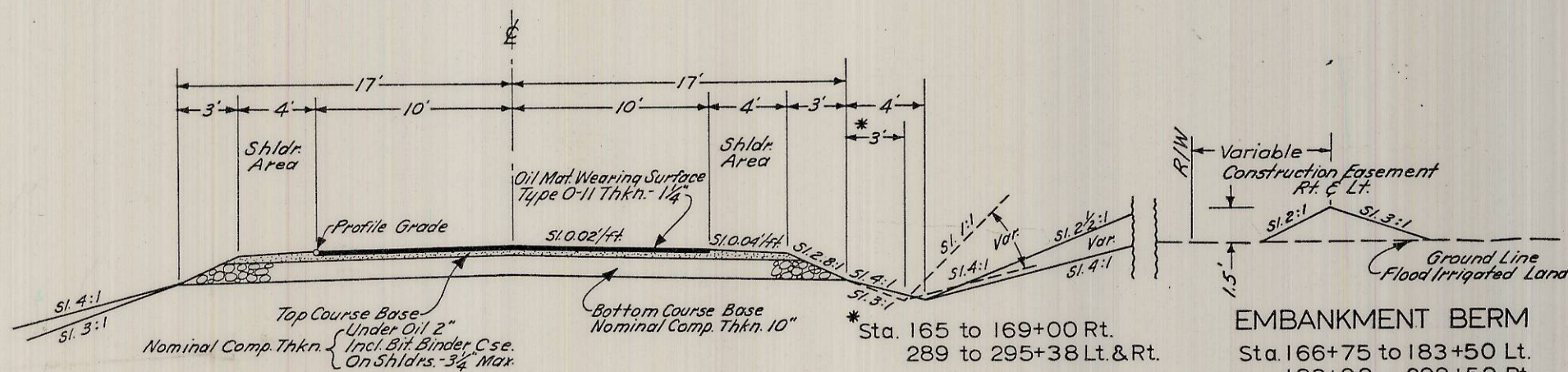
Structures



SECTION A-A

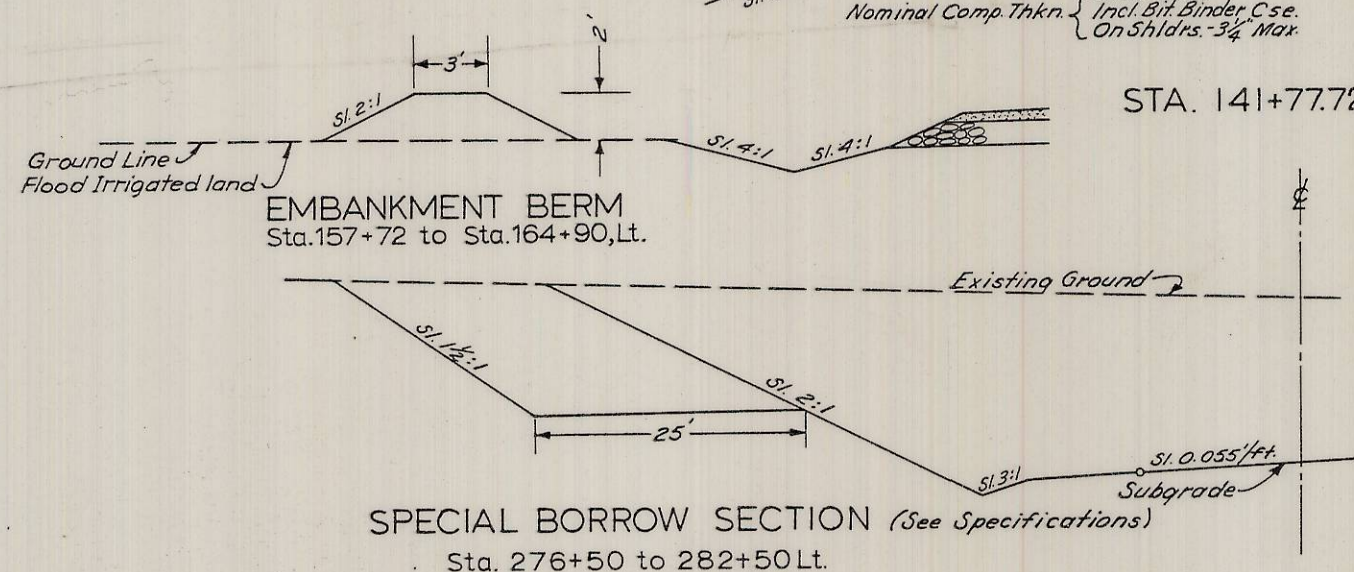


ELEVATION
HEADGATE
STA. 225+00 Rt.

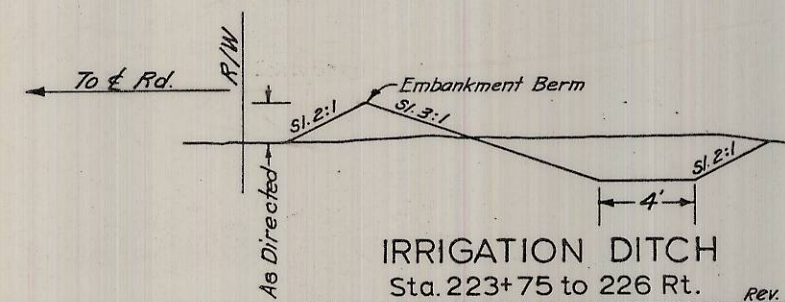


EMBankMENT BERM

Sta. 166+75 to 183+50 Lt.	
183+00	209+50 Rt.
208+50	213+50 Lt.
214+50	225+50 Rt.
225+50	234+25 Lt.
235+25	248+25 Lt.
249+00	272+00 Lt.



SPECIAL BORROW SECTION (See Specifications)
Sta. 276+50 to 282+50 Lt.



IRRIGATION DITCH
Sta. 223+75 to 226 Rt.

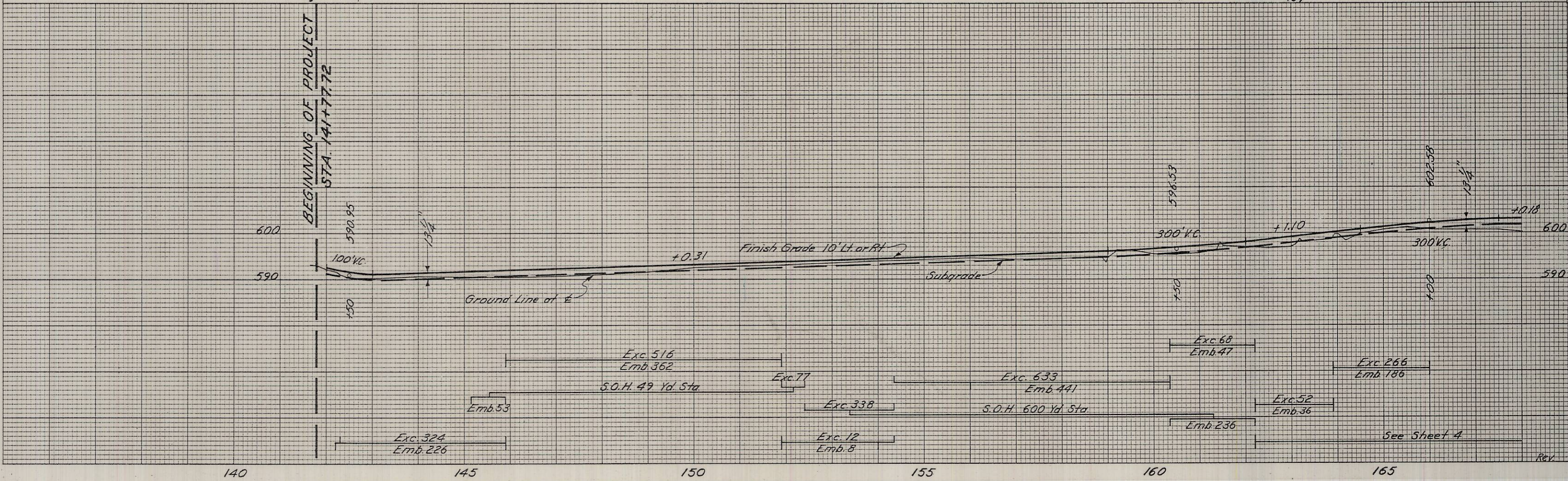
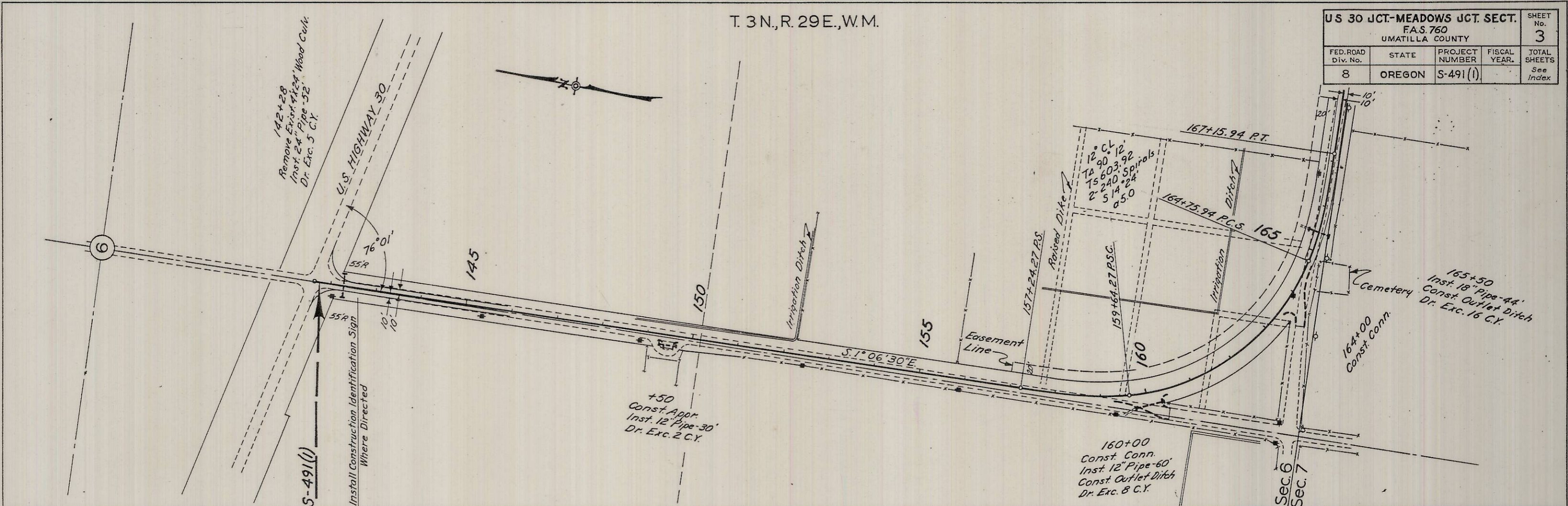
L. Sullivan

T. 3 N., R. 29 E., W.M.

US 30 JCT-MEADOWS JCT. SECT.				SHEET No.
F.A.S. 760				3
UMATILLA COUNTY				TOTAL SHEETS
FED. ROAD Div. No.	STATE	PROJECT NUMBER	FISCAL YEAR.	See Index
8	OREGON	S-491 (I)		

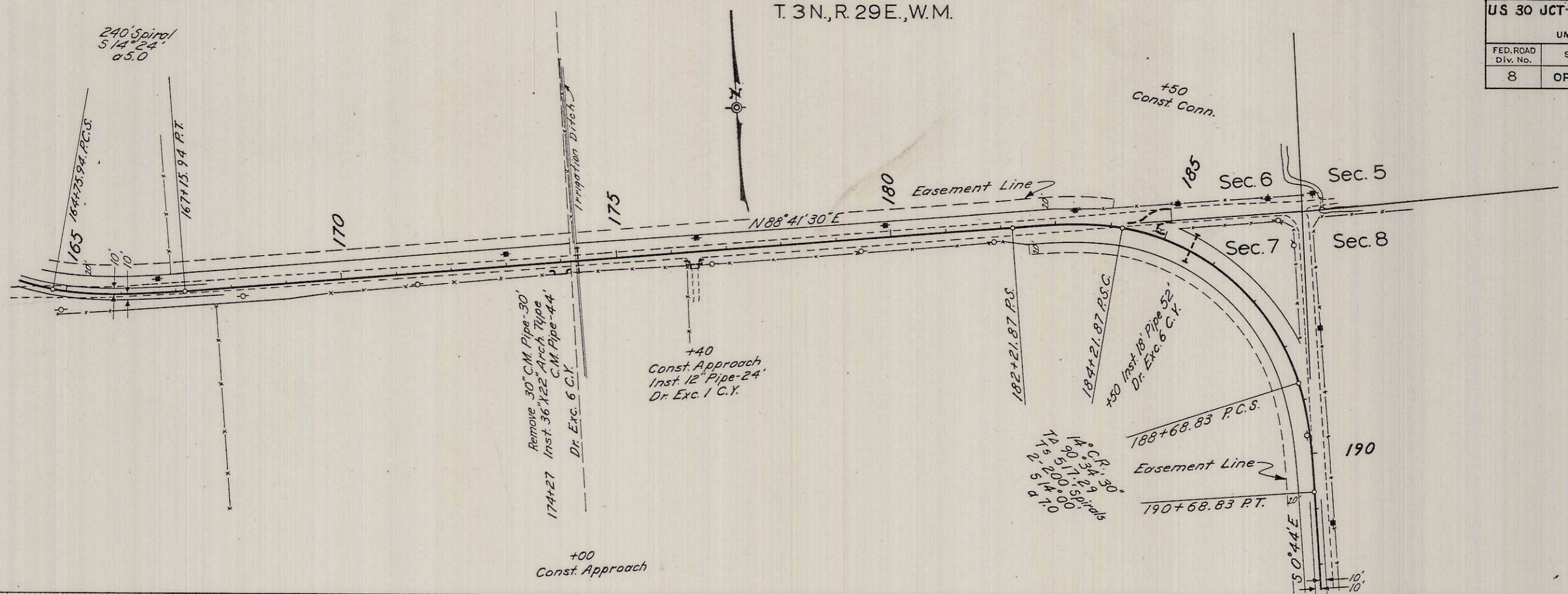
DATE	
BY	
REVISIONS	
NO.	
DESCRIPTION	
DATE	
BY	
REVISIONS	
NO.	
DESCRIPTION	
DATE	
BY	
REVISIONS	
NO.	
DESCRIPTION	

DATE	
BY	
REVISIONS	
NO.	
DESCRIPTION	
DATE	
BY	
REVISIONS	
NO.	
DESCRIPTION	
DATE	
BY	
REVISIONS	
NO.	
DESCRIPTION	



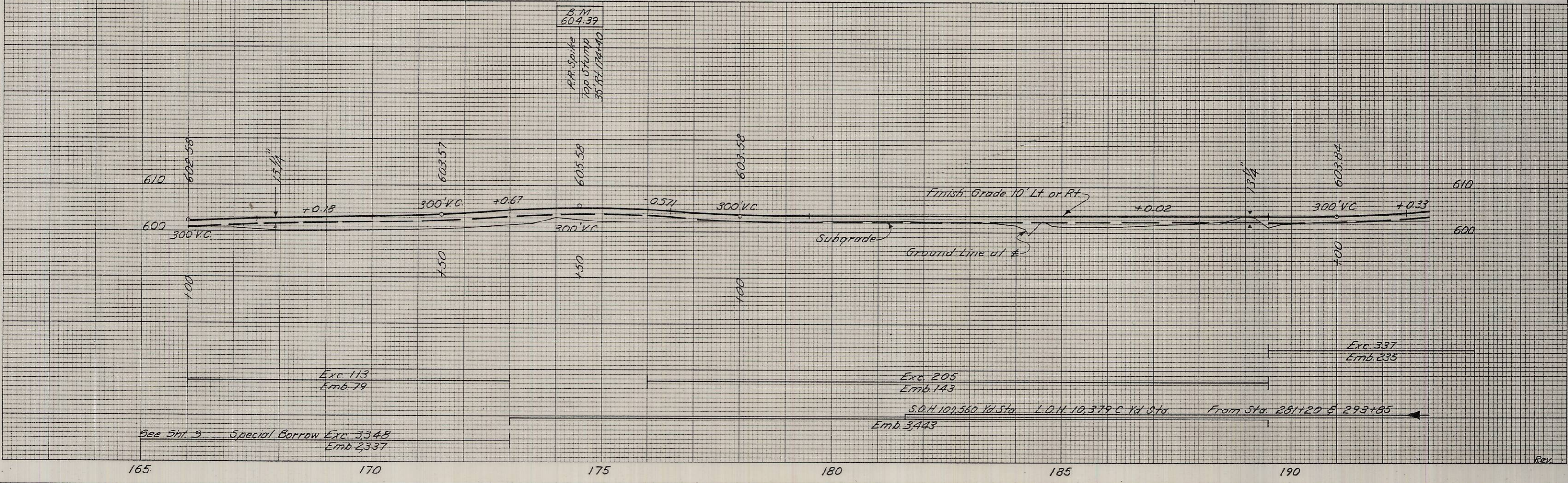
T. 3 N., R. 29 E., W.M.

US 30 JCT-MEADOWS JCT. SECT.					SHEET No.
F.A.S. 760					4
UMATILLA COUNTY					
FED. ROAD Div. No.	STATE	PROJECT NUMBER	FISCAL YEAR	TOTAL SHEETS	
8	OREGON	S-491(1)		See Index	



DATE	
BY	
SURVEYED	
REVISION	
NO.	
FINAL SURVEY	
NOTE BOOK	
AREAS CHECKED	

DATE	
BY	
SURVEYED	
REVISION	
NO.	
ORIGINAL SURVEY	
NOTE BOOK	
AREAS CHECKED	

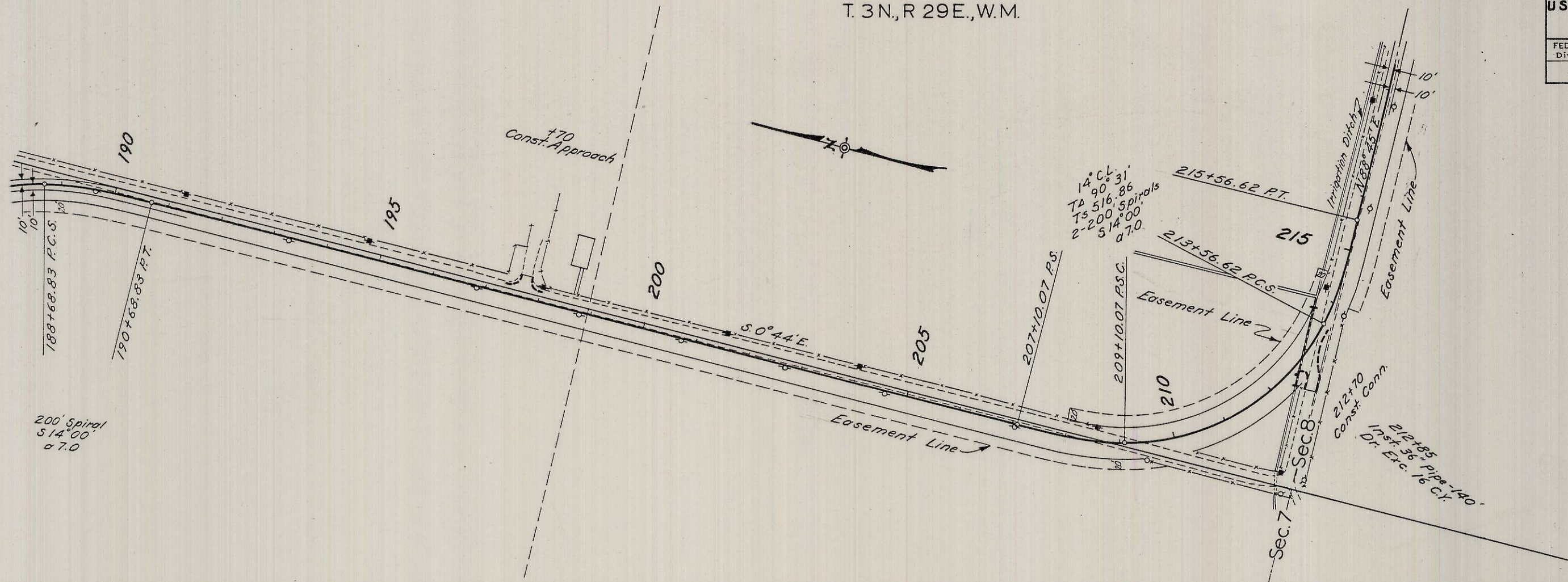


REV.

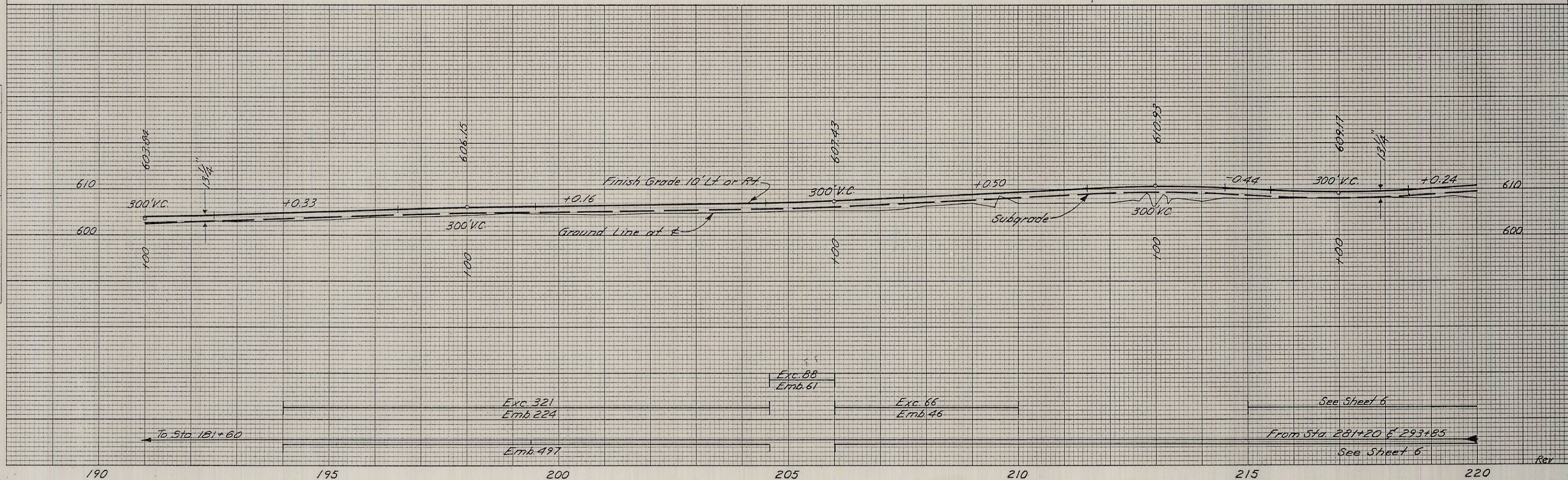
T. 3N., R. 29E., W.M.

US 30 JCT.-MEADOWS JCT. SECT.				SHEET No.
F.A.S. 760				5
UMATILLA COUNTY				
FED. ROAD Div. No.	STATE	PROJECT NUMBER	FISCAL YEAR	TOTAL SHEETS
8	OREGON	S-491 (1)		See Index

FINAL SURVEY	SURVEYED	DATE
NO. _____	BY _____	_____
NOTE BOOK NO. _____	PLOTTED	DATE
AREAS CHECKED	_____	_____



ORIGINAL SURVEY	SURVEYED	DATE
NO. _____	BY _____	_____
NOTE BOOK NO. _____	PLOTTED	DATE
AREAS CHECKED	_____	_____



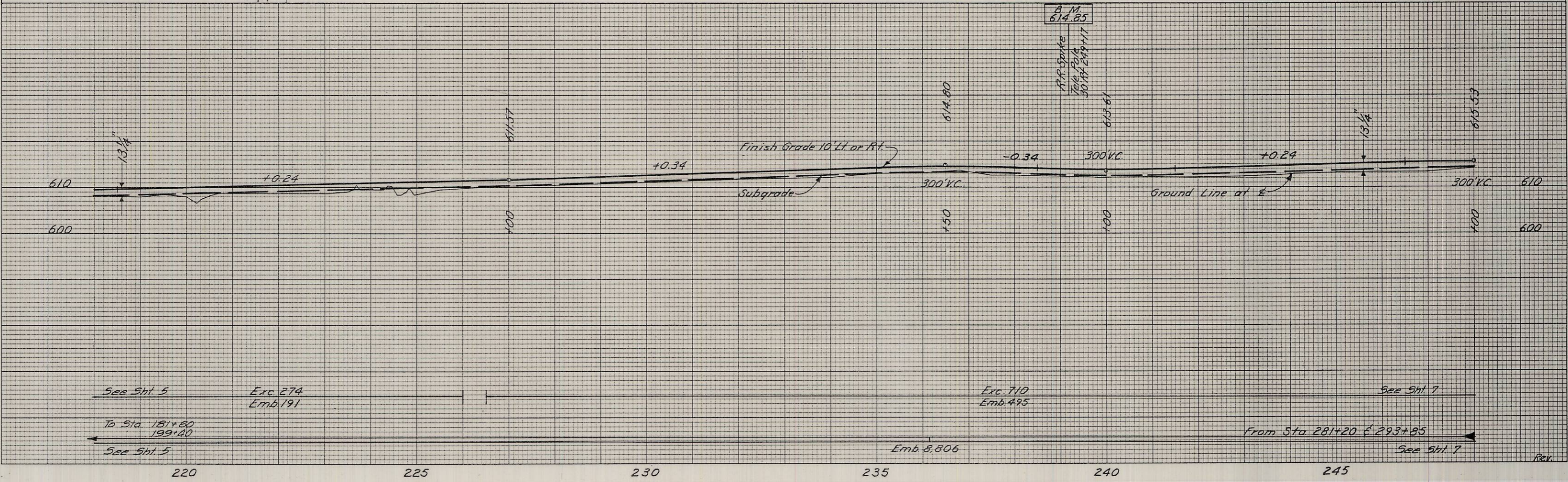
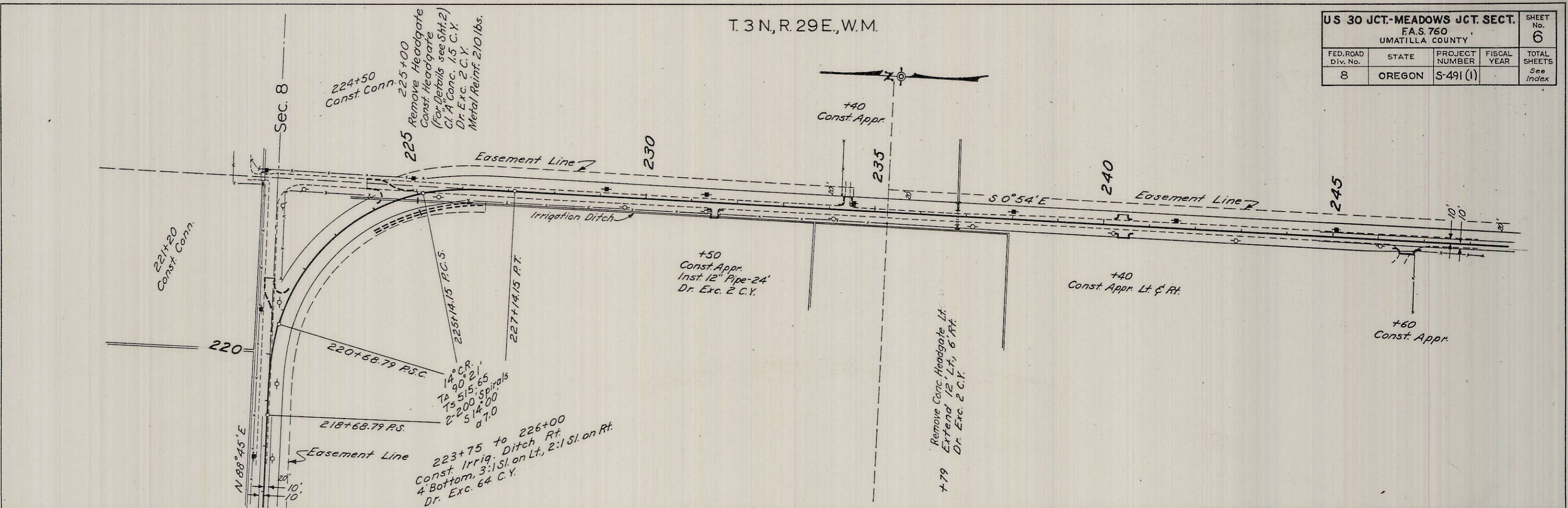
Rev

T. 3 N., R. 29 E., W.M.

US 30 JCT.-MEADOWS JCT. SECT.				SHEET No.
F.A.S. 760				6
UMATILLA COUNTY				
FED. ROAD Div. No.	STATE	PROJECT NUMBER	FISCAL YEAR	TOTAL SHEETS
8	OREGON	S-491 (I)		See Index

DATE	
BY	
FINAL SURVEY	DATE
NO.	
NO.	
NO.	
NO.	

DATE	
BY	
ORIGINAL SURVEY	DATE
NO.	
NO.	
NO.	
NO.	



See Sht. 5 To Sta. 181+60 199+40 See Sht. 5

Exc. 274 Emb. 191

Exc. 710 Emb. 495

Emb. 8,806

From Sta. 281+20 & 293+85 See Sht. 7

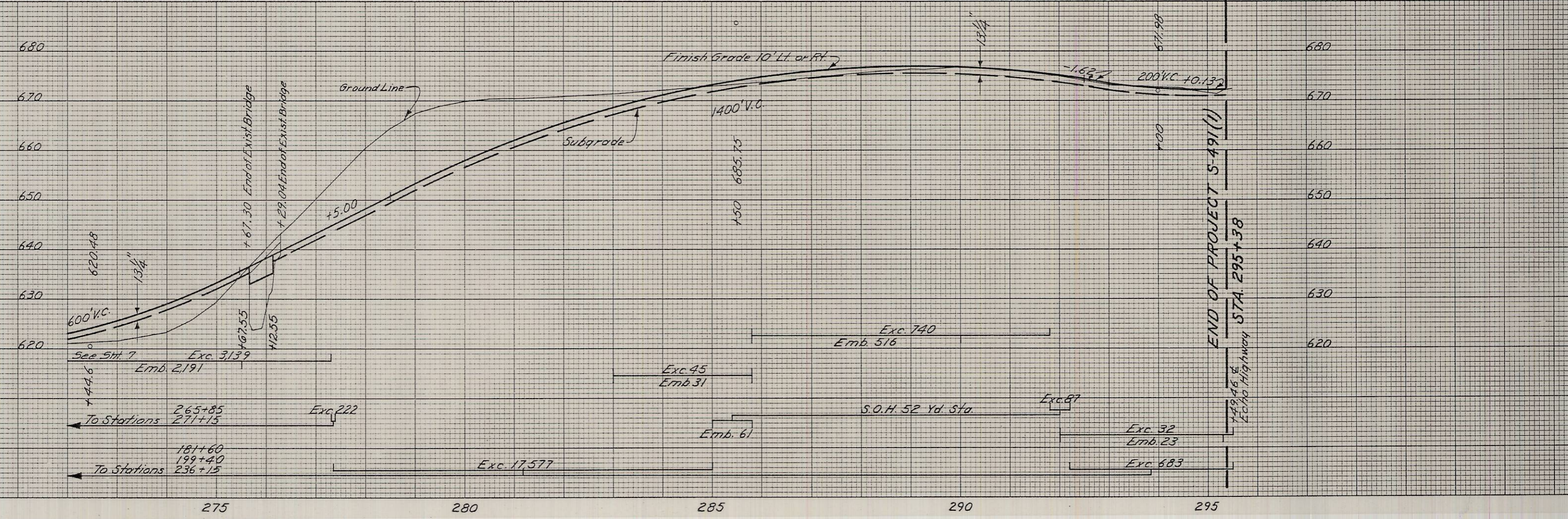
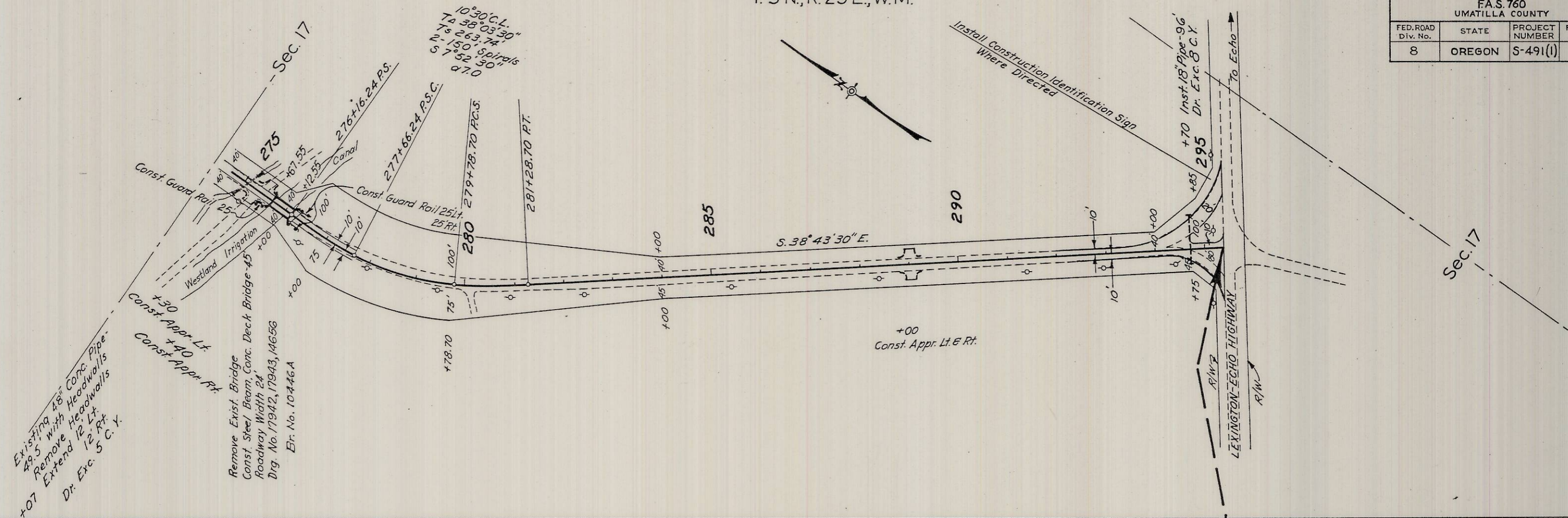
220 225 230 235 240 245

T. 3 N., R. 29 E., W.M.

U S 30 JCT-MEADOWS JCT. SECT.				SHEET No.
F.A.S. 760				8
UMATILLA COUNTY				
FED. ROAD Div. No.	STATE	PROJECT NUMBER	FISCAL YEAR	TOTAL SHEETS
8	OREGON	S-491(I)		See Index

FINAL SURVEY	DATE
SURVEYED BY	
NOTE BOOK NO.	
AREAS CHECKED	
BRIDGE DETAILS CHECKED	

ORIGINAL SURVEY	DATE
SURVEYED BY	
NOTE BOOK NO.	
AREAS CHECKED	



REV.