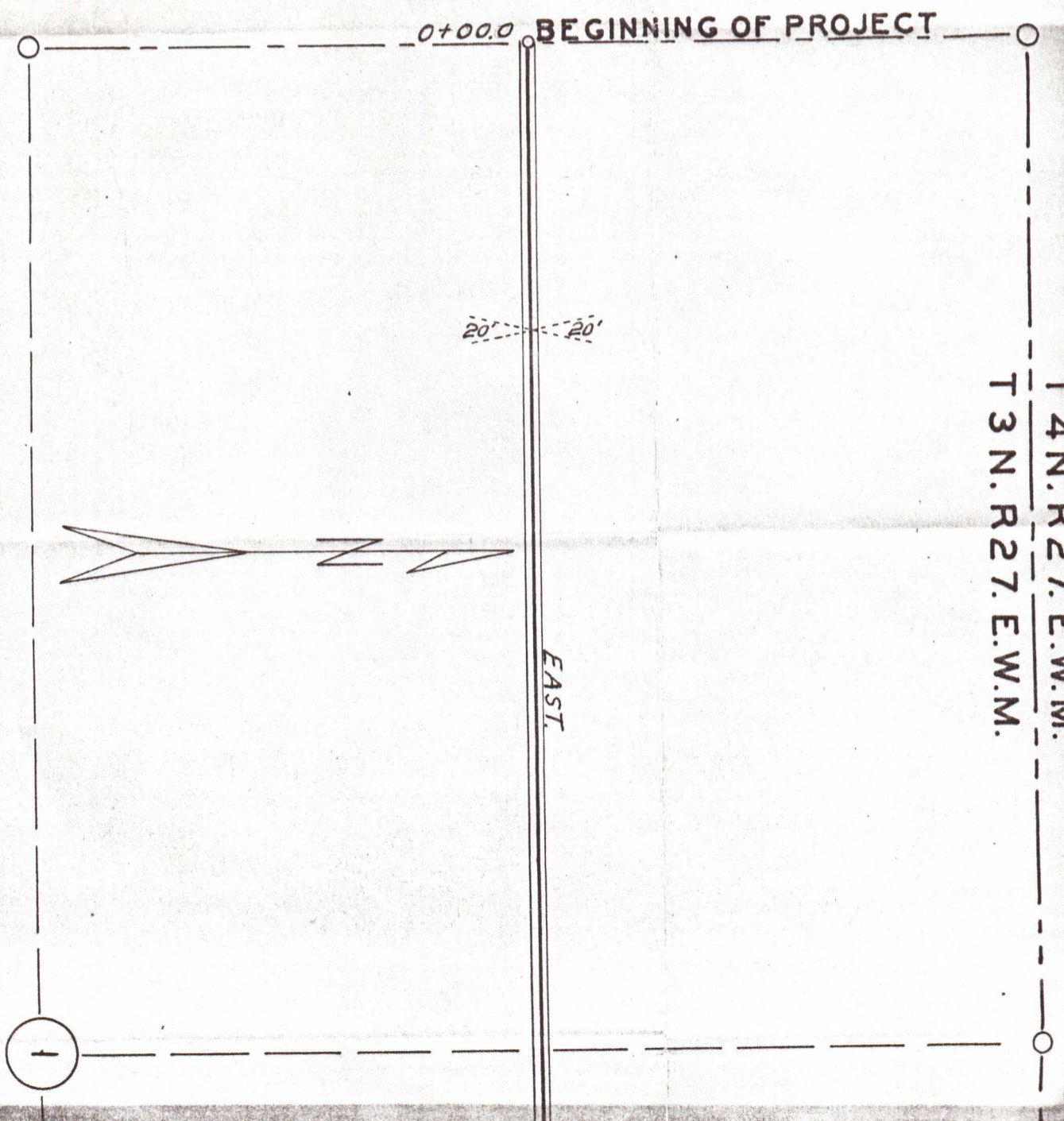


MATILLA COUNTY OREGON  
COUNTY ENGINEERS OFFICE  
COUNTY ROAD NO. 854

LOCATED LINE  
E11N.=400FT. T3N.R27.E.W.M.



T4N.R27.E.W.M.  
T3N.R27.E.W.M.

0+00.0 BEGINNING OF PROJECT

T 4 N. R 27. E. W. M.  
T 3 N. R 27. E. W. M.



EAST

20' 20'

36+69.1 P.C.

10° C.L.  
Δ = 30° 56'

39+78.4 P.T.

N 59° 04' E

52+11.6 P.C.

10° C.L.  
Δ = 58° 59'

58+01.4 P.T.

59+16.6 P.O.T.

N 0° 05' E

T 3 N. R 27. E. W. M.

T 3 N. R 28. E. W. M.

EN