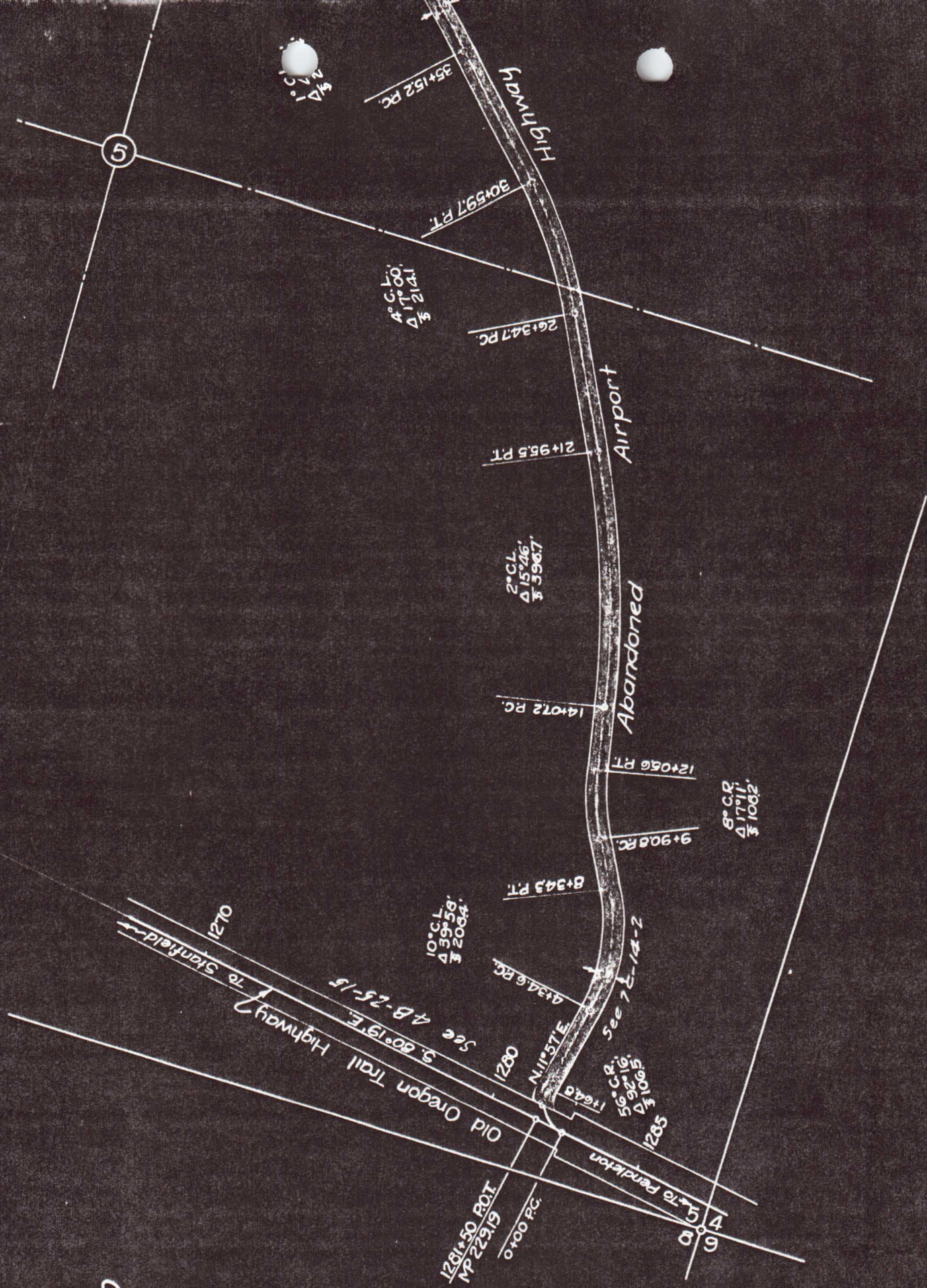
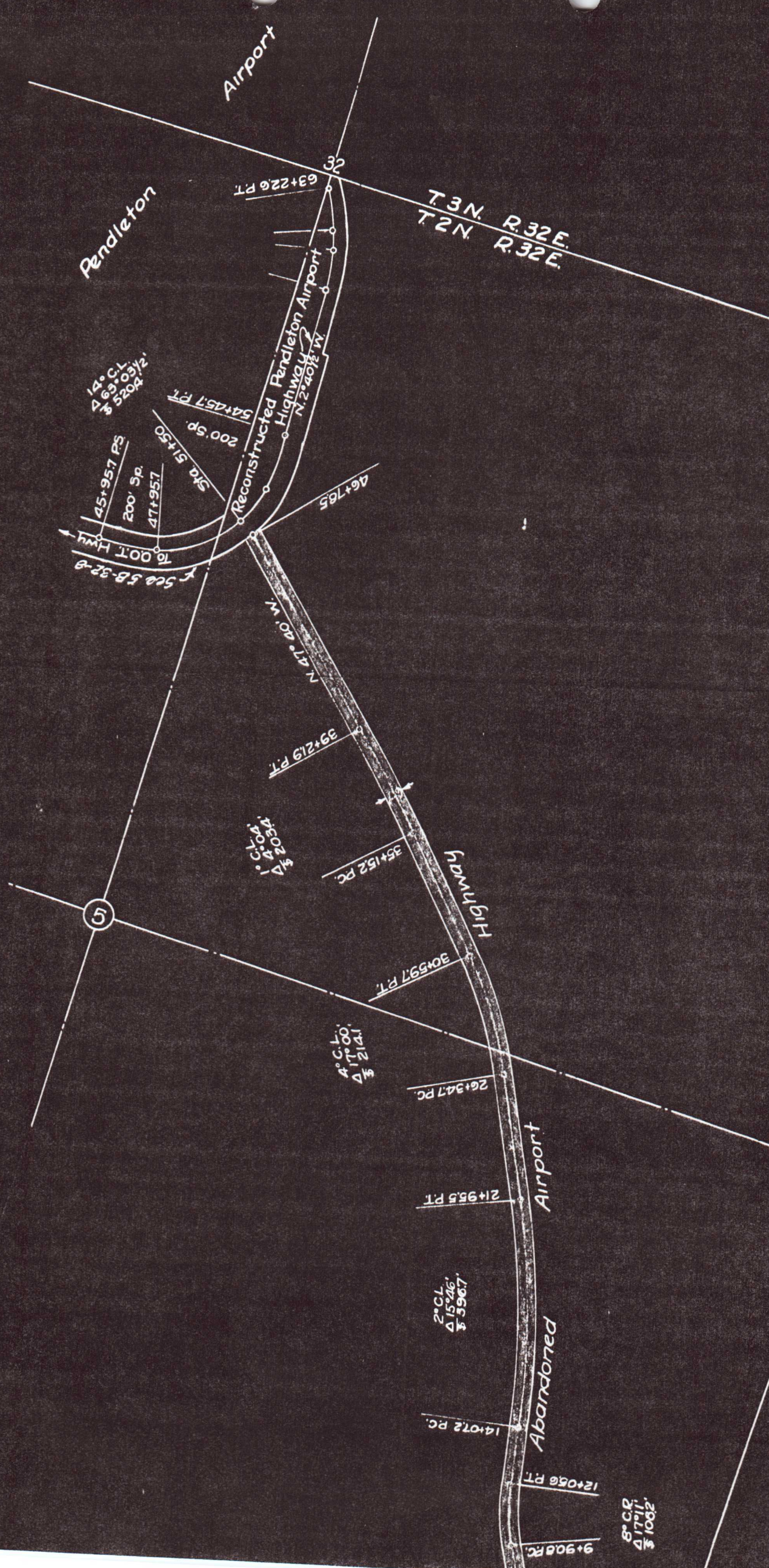


Oregon State Highway Department  
 SKETCH MAP SHOWING  
 RIGHT OF WAY of THE ABANDONED  
 PENDLETON AIRPORT HIGHWAY  
 UMATILLA COUNTY  
 Scale 1" = 400' Dec., 1941







Airport

Pendleton

T 3 N. R. 32 E.  
T 2 N. R. 32 E.

63+22.6 PT

14° C.L.  
Δ 63° 03 1/2'  
S 5202 1/2'

54+45.7 PT  
200' Sp.  
Sta 51+50

45+95.7 PS  
200' Sp.  
47+95.7

Reconstructed Pendleton Airport Highway  
N. 2° 40 1/2' W.

46+76.5

16 00 T Hwy  
5ca 5B-32-8

N 47° 40' W.

39+21.9 PT

4° C.L.  
Δ 17° 00'  
S 2141'

35+15.2 PC

Highway

5

30+59.7 PT

4° C.L.  
Δ 17° 00'  
S 2141'

26+34.7 PC

Airport

21+95.5 PT

2° C.L.  
Δ 15° 26'  
S 596.7'

Abandoned Airport Highway

14+07.2 PC

12+05.6 PT

9+90.8 RC

8° C.L.  
Δ 17° 11'  
S 1002'