

Piper 6c
25-3

T. 2. N. R. 32. E.

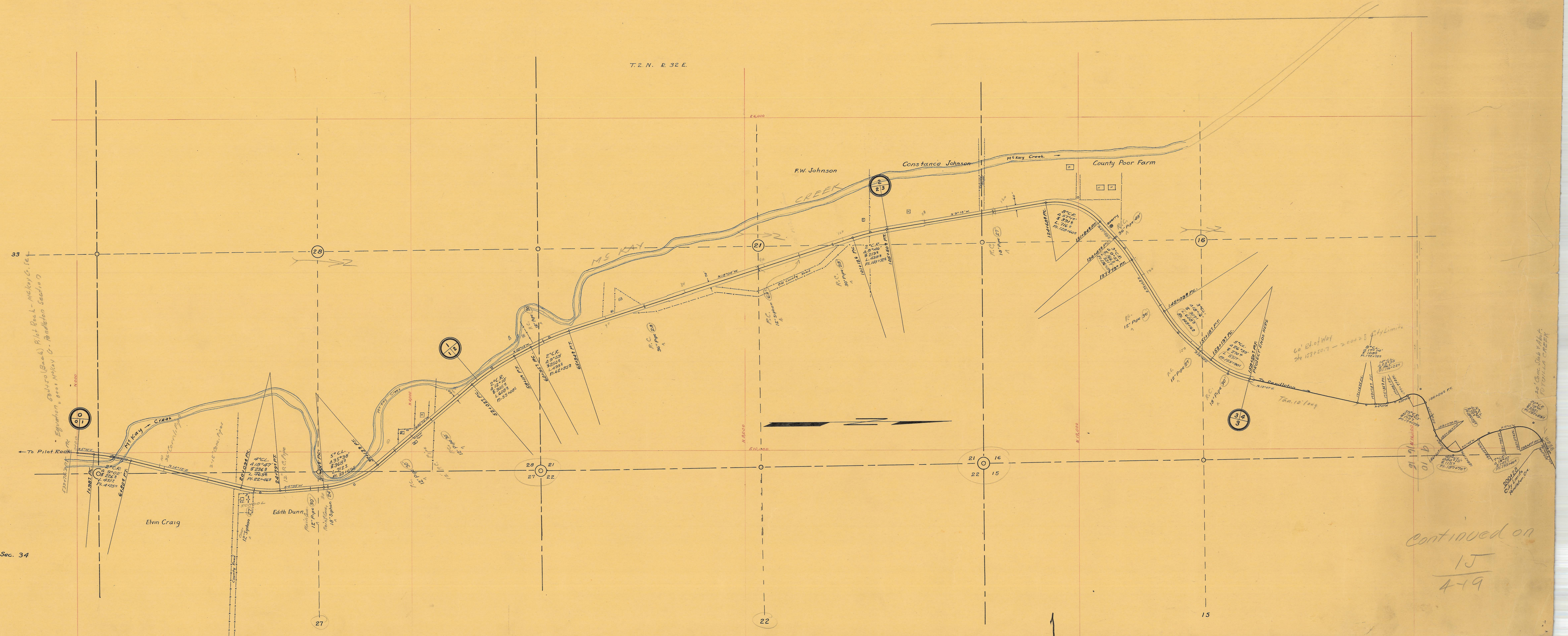
OREGON STATE HIGHWAY DEPARTMENT
OREGON-WASHINGTON HIGHWAY
MCKAY CREEK-PENDLETON SEC.

CONSTRUCTED LINE
UMATILLA COUNTY

Scale 1 in. = 400 ft.

W. C. Williams Res. Engr.

Sec. 34



Continued on
15
4-19