

260 12 54635

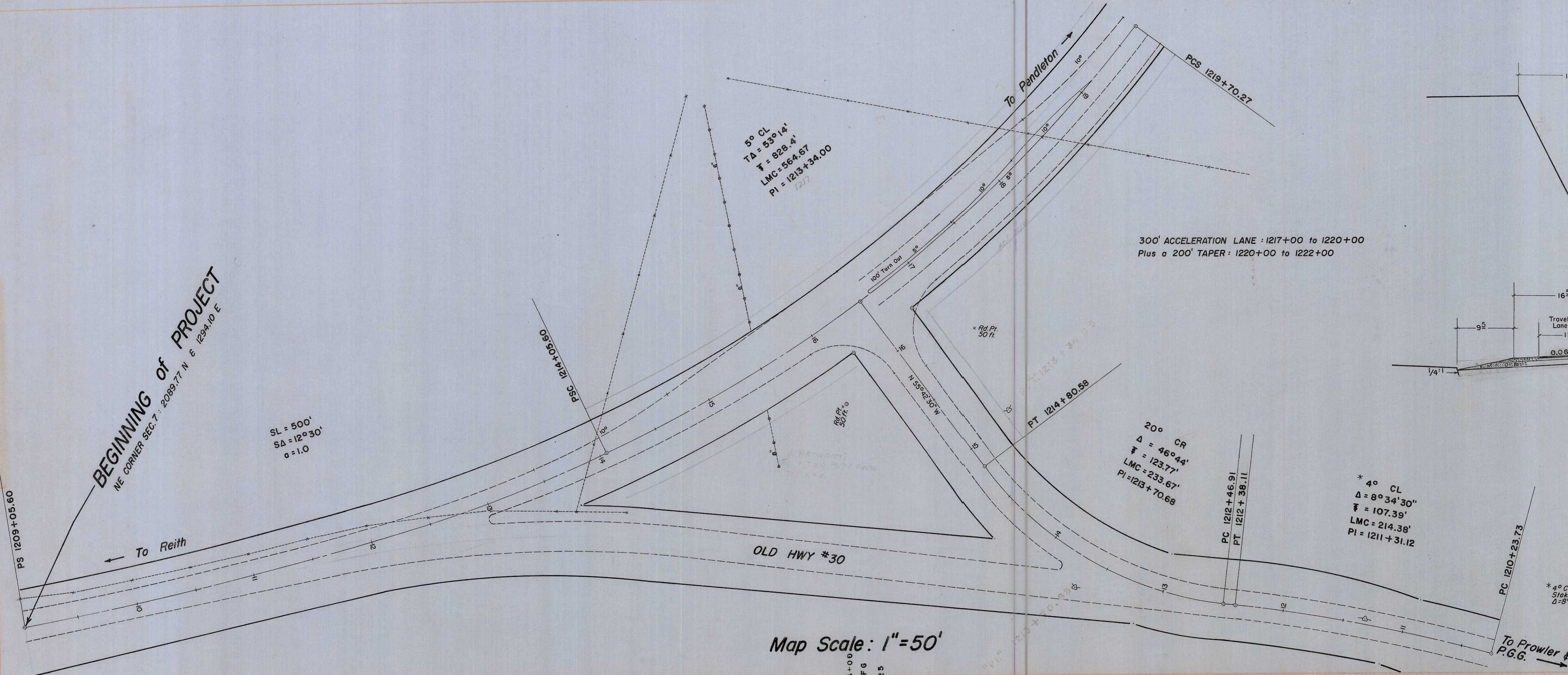
BOX # 501

DATE	
BY	
REVISION	
NO.	

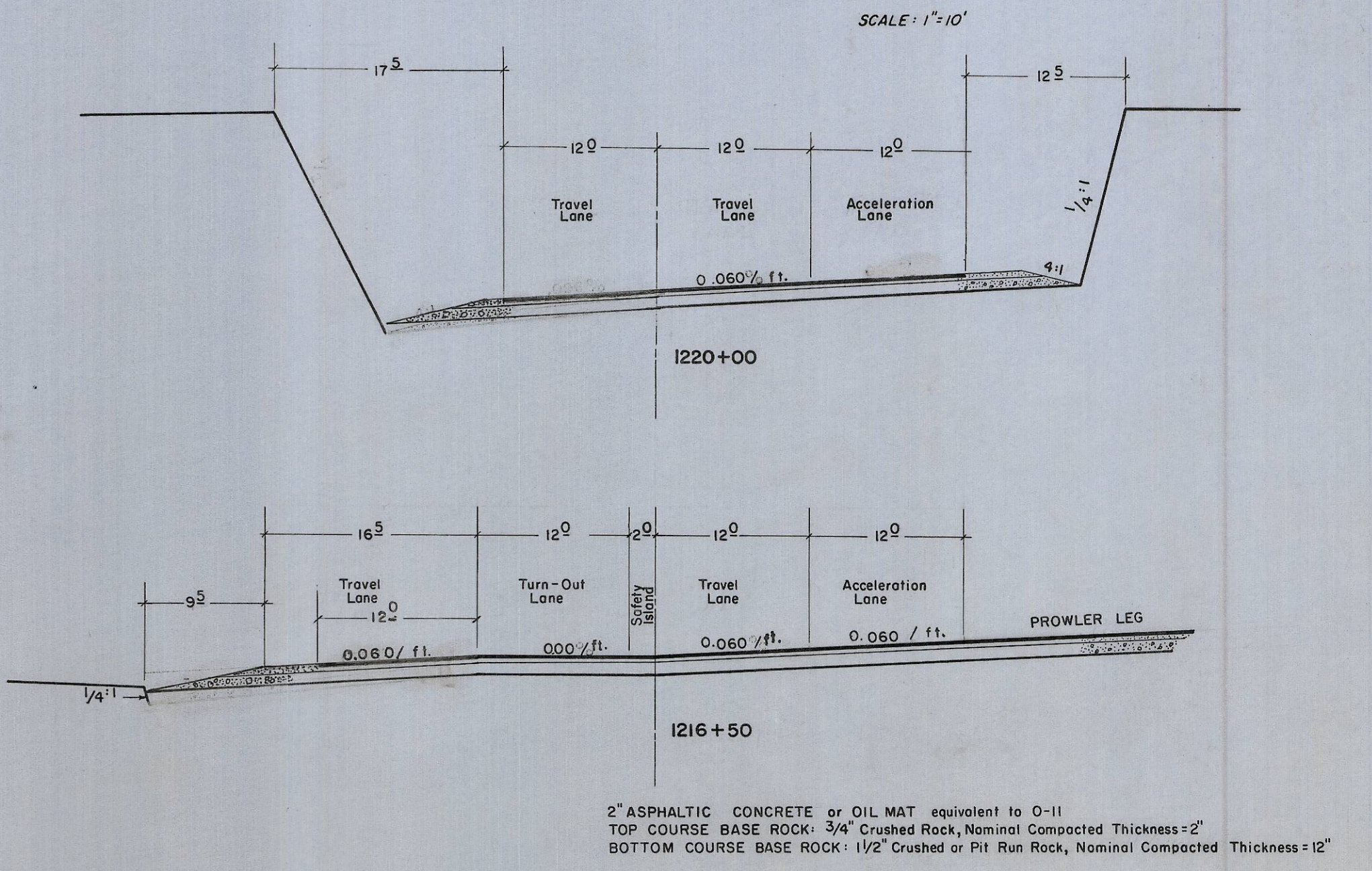
BOX # 501
 1/4" = 20' VERT.
 1/4" = 100' HORIZ.
 BENJAMIN-HARRIS
 NEEL SEMSTEAD WALESCHNYE

DATE	
BY	
REVISION	
NO.	

ORIGINAL SURVEY
 SURVEYED AREAS
 TEMPLATE
 NOTES
 SPECIAL CONDITIONS

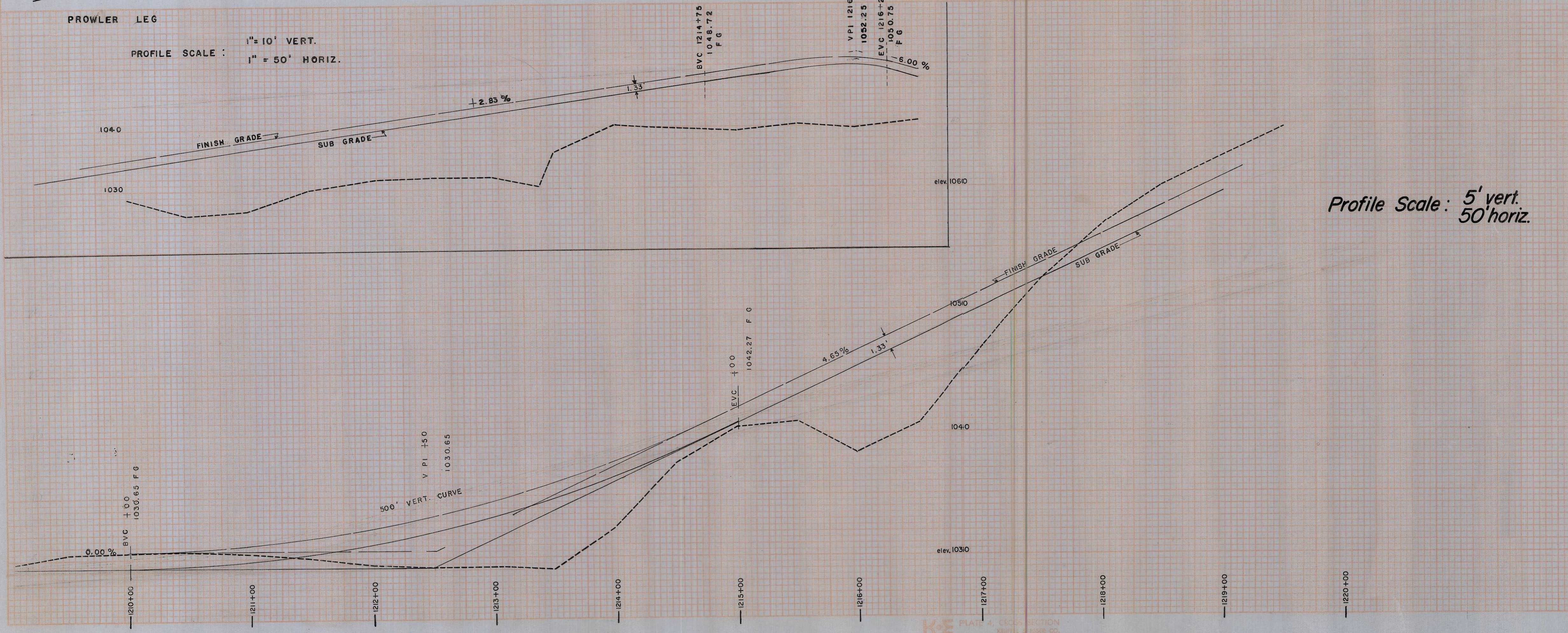


Typical Sections



* 4° Curve for Description purposes Only,
 Stake in field a 2° Curve: PI=1211+31.12,
 $\Delta = 8° 34' 30''$, $\bar{r} = 214.38'$, $LMC = 488.33'$

REGISTERED PROFESSIONAL LAND SURVEYOR
 David N. Kumbler
 DAVID N. KUMBEIN
 1955



UMATILLA COUNTY ROAD DEPARTMENT	
PENDLETON-REITH HWY.	
SECTION 7, T.2N, R.32 E, WM	DETAIL SHEET
Date: 4/21/72	Drawn by: Witherell
APPROVED BY:	2
Revised:	