

ELWOOD TRACTS

2000	600	590
1900	700	500

ELWOOD TRACTS

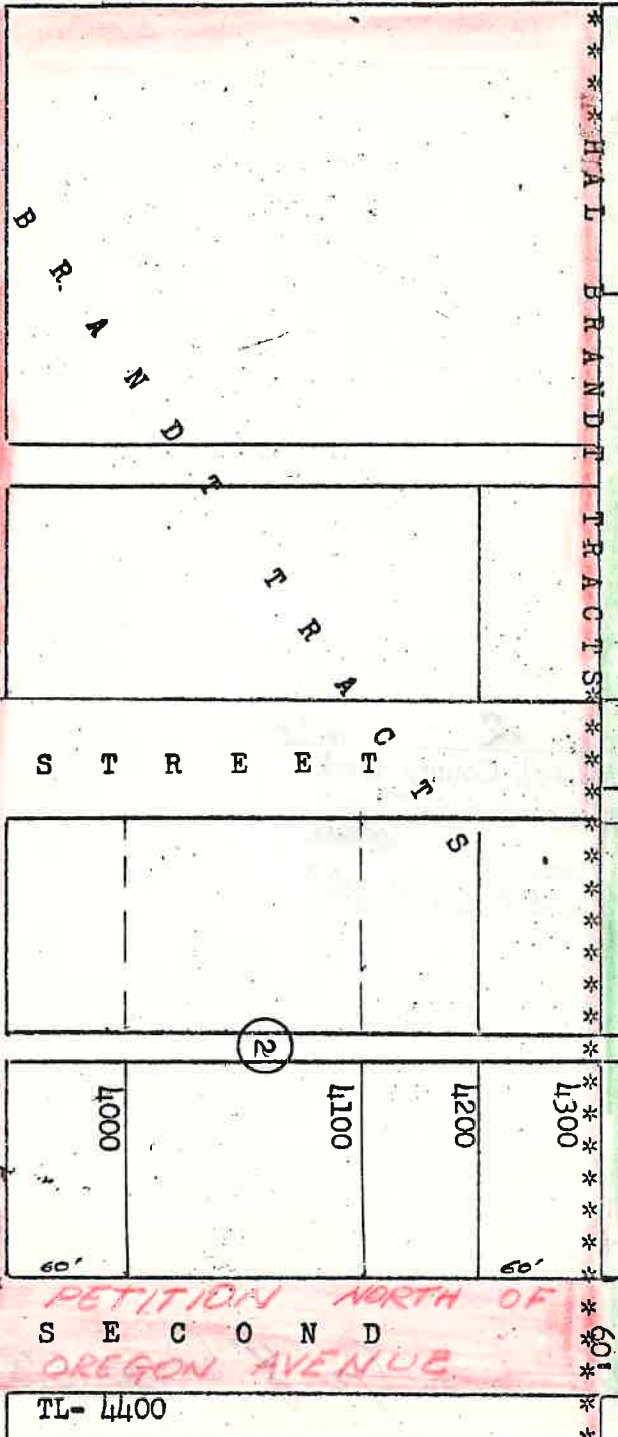
Scale: 1" = 100'



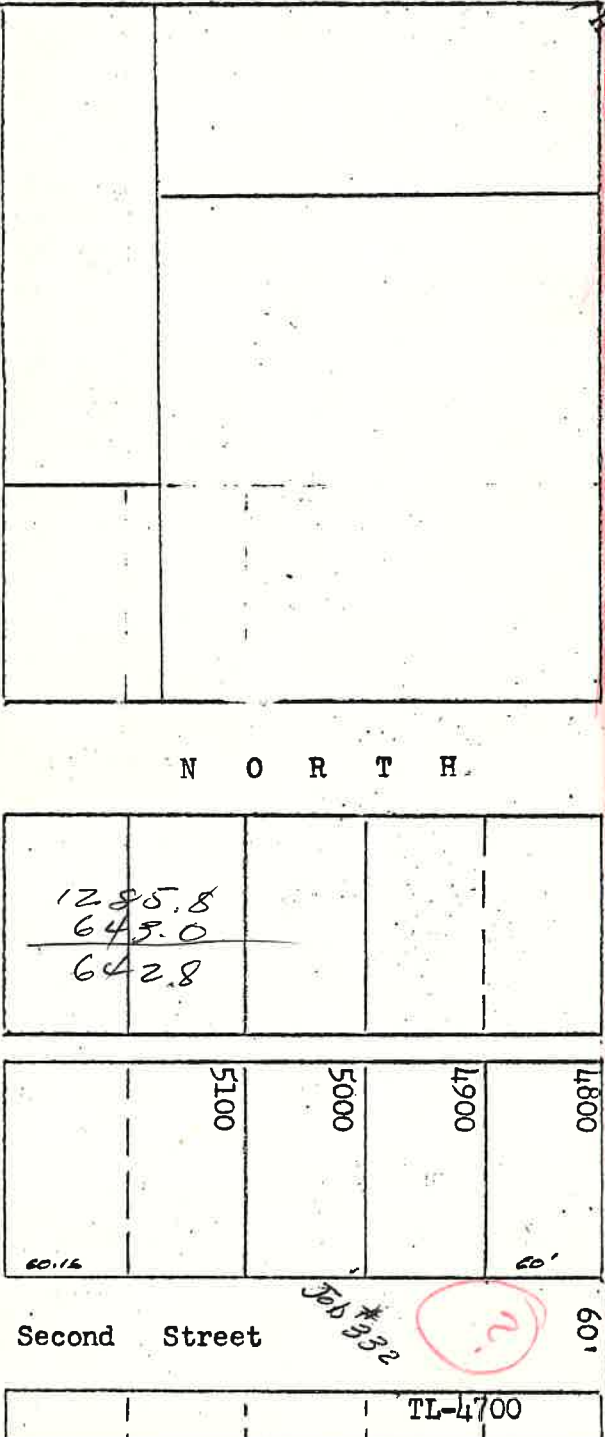
ELWOOD

FRAGS

North Street



PETITION NORTH OF SECOND OREGON AVENUE (S 89°32'E - 651.08) [6+51.08]



1285.8
645.0

642.8

4800	60'
4900	60'
5000	60'
5100	60'

Second Street

TL-4700

PETITION NORTH OF SECOND OREGON AVENUE

TL-4400

PETITION NORTH OF SECOND STREET (N 0°29'E. 643.01)

TL-400

(N 0°29'E. 643.01)

TL-590
UMATILLA COUNTY
Bk. 300 Pg. 302

TL-500

Job # 332

2

2

2

Filed Aug 2 1922
Jessie M. Bell, County Clerk
By Jessie M. Bell
C. C. Bell