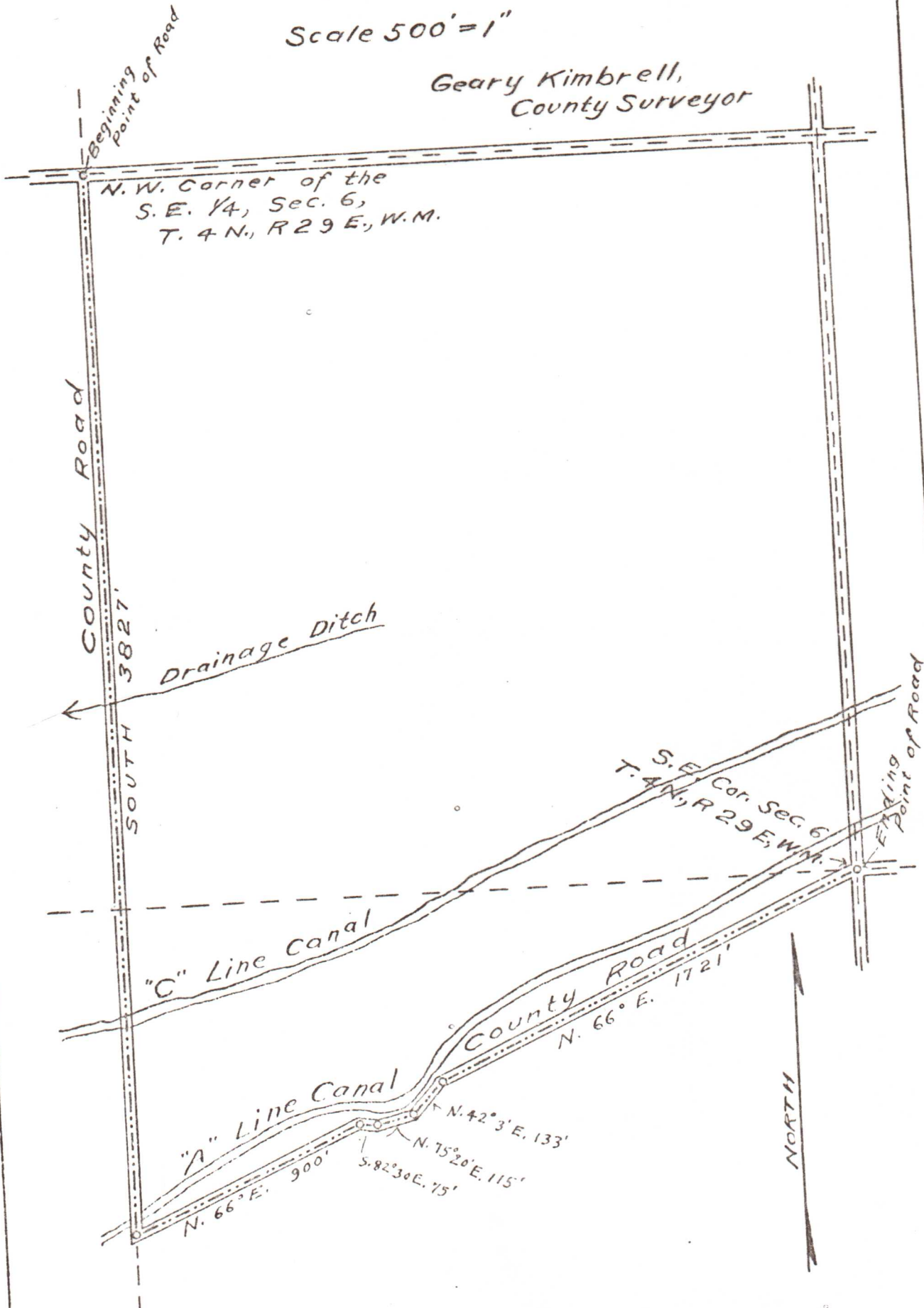


Map of  
W. A. Leathers Road  
Apr. 1918.

Scale 500' = 1"

Geary Kimbrell,  
County Surveyor



N.W. Corner of the  
S.E. 1/4, Sec. 6,  
T. 4 N., R. 29 E., W.M.

COUNTY ROAD  
SOUTH 3827'

Drainage Ditch

"C" Line Canal

"A" Line Canal

County Road

N. 66° E. 900'  
S. 82° 30' E. 75'  
N. 75° 20' E. 115'  
N. 42° 3' E. 133'

N. 66° E. 1721'

S.E. Cor. Sec. 6,  
T. 4 N., R. 29 E., W.M.

NORTH

Beginning Point of Road

Ending Point of Road