

**NOTE:**

**CROSSING "A"**

Sight Distance "A" allows vision for a distance of 1500 feet along the proposed track.  
 Sight Distance "B" allows vision for a distance of 1300 feet along the proposed track.  
 Sight Distance "C" allows vision for a distance of 1500 feet along the proposed track.  
 Sight Distance "D" allows vision for a distance of 1000 feet along the proposed track.  
 Sight Distance "E" allows vision for a distance of 1600 feet along the proposed track.  
 Sight Distance "F" allows vision for a distance of 1300 feet along the proposed track.  
 Sight Distance "G" allows vision for a distance of 1600 feet along the proposed track.  
 Sight Distance "H" allows vision for a distance of 1500 feet along the proposed track.  
 Sight Distance "I" allows vision for a distance of 1600 feet along the proposed track.  
 Sight Distance "J" allows vision for a distance of 1700 feet along the proposed track.

The average volume of vehicular traffic over the proposed crossing is 102 movements per day.

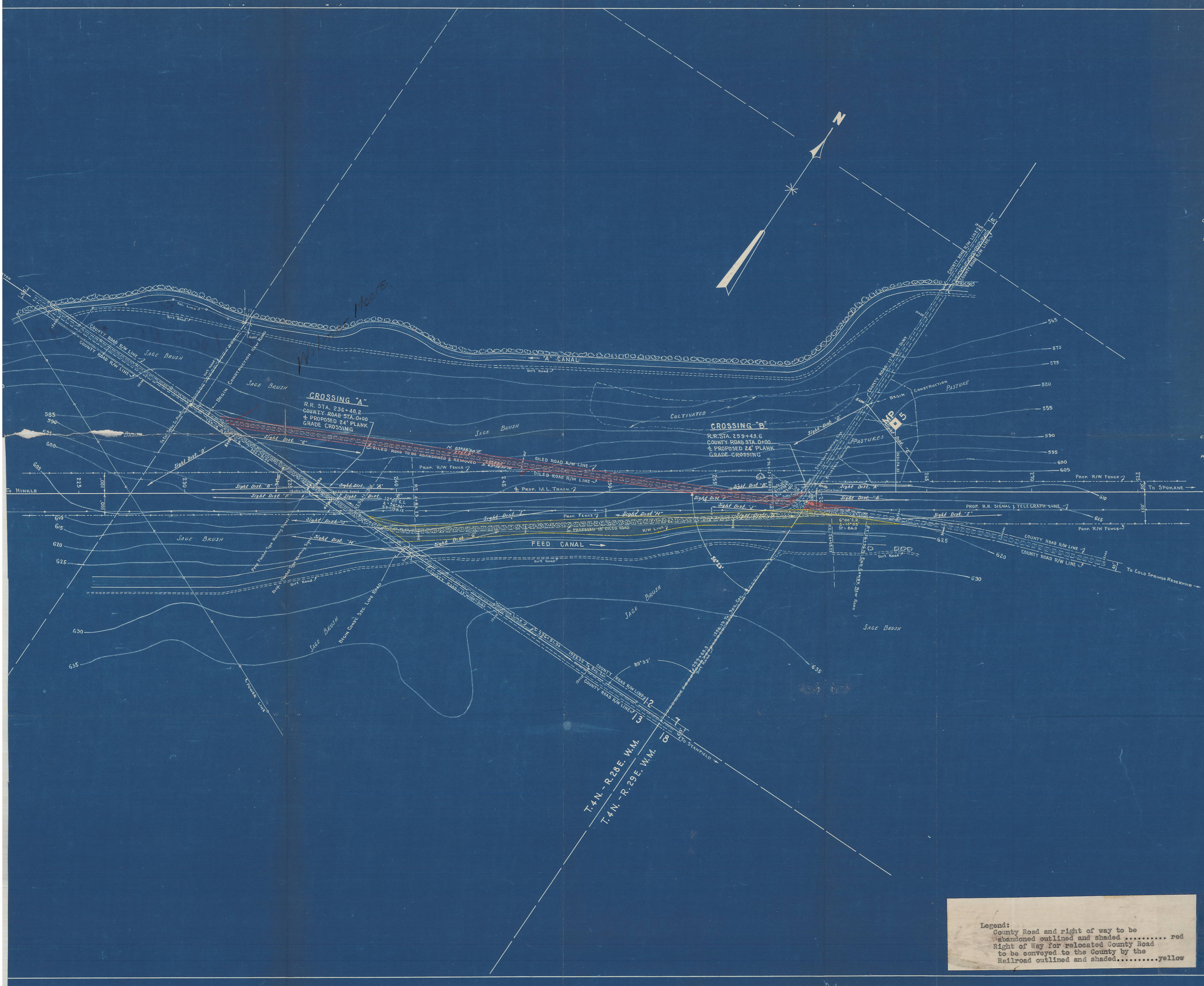
Proposed crossing protection to consist of automatic flasher type warning signals located on either side of crossing.

**CROSSING "B"**

Sight Distance "A" allows vision for a distance of 5000 feet along the proposed track.  
 Sight Distance "B" allows vision for a distance of 600 feet along the proposed track.  
 Sight Distance "C" allows vision for a distance of 600 feet along the proposed track.  
 Sight Distance "D" allows vision for a distance of 500 feet along the proposed track.  
 Sight Distance "E" allows vision for a distance of 5300 feet along the proposed track.  
 Sight Distance "F" allows vision for a distance of 5200 feet along the proposed track.  
 Sight Distance "G" allows vision for a distance of 5300 feet along the proposed track.  
 Sight Distance "H" allows vision for a distance of 5100 feet along the proposed track.  
 Sight Distance "I" allows vision for a distance of 5500 feet along the proposed track.  
 Sight Distance "J" allows vision for a distance of 1600 feet along the proposed track.

The average volume of vehicular traffic over the proposed crossing is eight movements per day.

Proposed crossing protection to consist of standard crossbuck warning signs located on either side of crossing.



**Legend:**  
 County Road and right of way to be abandoned outlined and shaded.....red  
 Right of way for relocated County Road to be conveyed to the County by the Railroad outlined and shaded.....yellow

**EXHIBIT A**

**UNION PACIFIC RAILROAD CO. NORTHWESTERN DISTRICT**

UMATILLA COUNTY, OREGON.  
 SE 1/4 Sec. 12 & NE 1/4 Sec. 13 T.4N.-R.28E.-W.M.  
 SW 1/4 Sec. 7 & NW 1/4 Sec. 18 T.4N.-R.29E.-W.M.  
 PROPOSED PUBLIC ROAD CROSSINGS AT GRADE OVER PROPOSED NEW MAIN LINE TRACK FROM HINKLE TO SAND, OREGON AT STA. 236+48.2 AND STA. 259+43.6

OFFICE OF RESIDENT ENGINEER  
 HERMISTON, OREGON.

Scale: 1"=200'  
 Date: Nov. 7, 1949  
 Field Notes - R.T.E.  
 Drawn By - W.N.S.  
 Checked By - R.M.S.