

ROAD 292
WIDTH = 50'

ROAD 452
WIDTH = 60'

ROAD 292
WIDTH = 50'

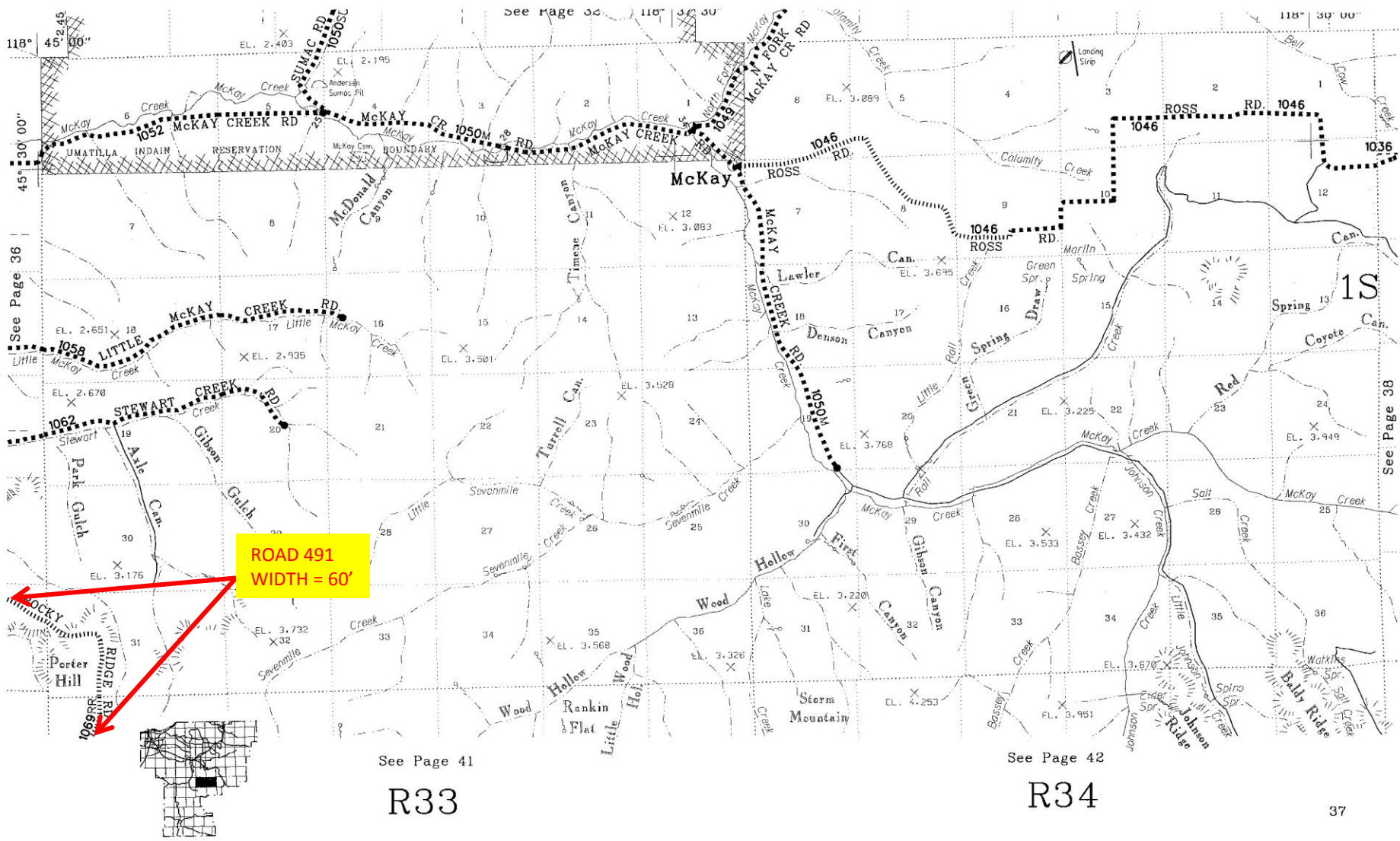
ROAD 491
WIDTH = 60'

See Page 40

R31

See Page 41

R32



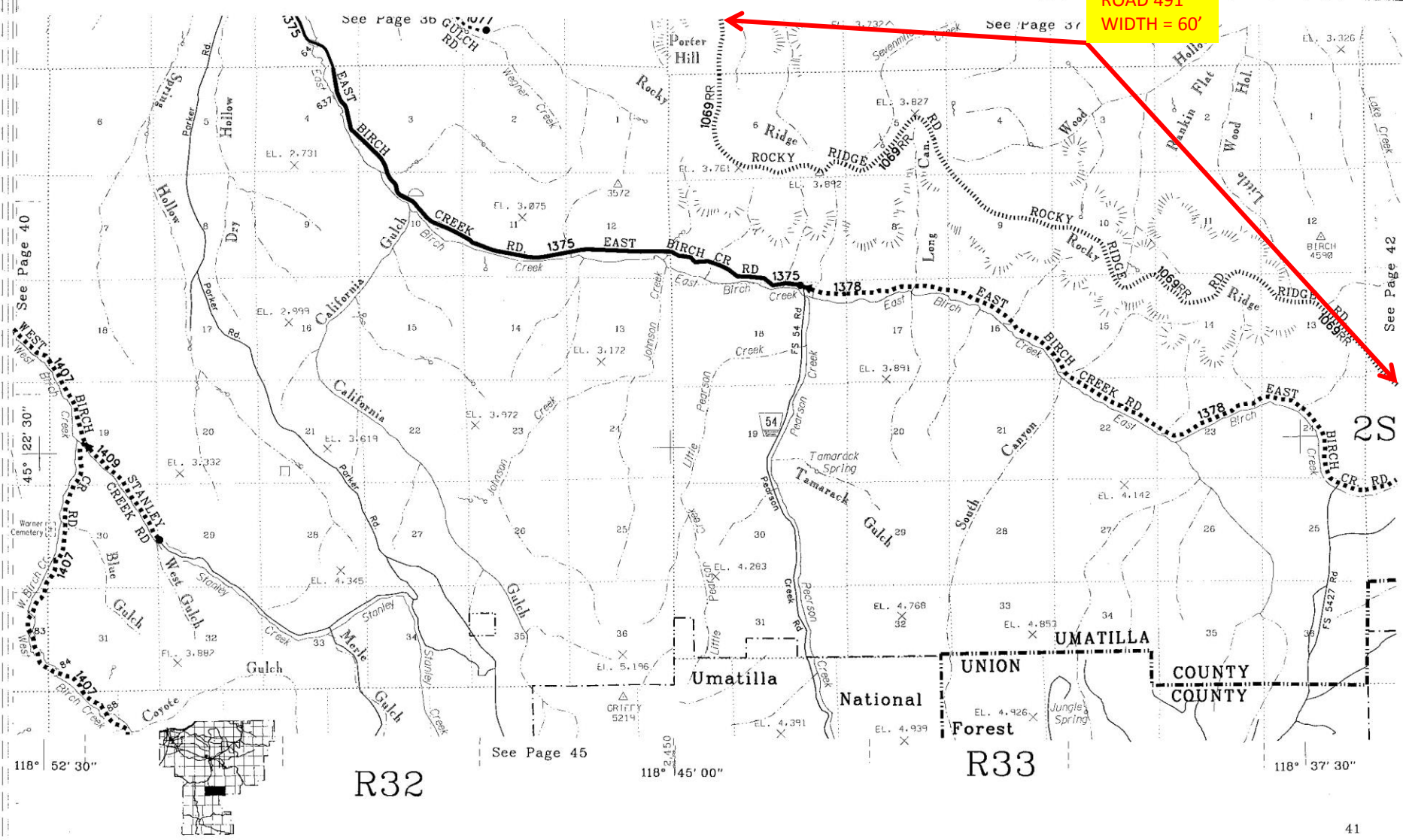
See Page 41

R33

See Page 42

R34

ROAD 491
WIDTH = 60'



See Page 40

See Page 31

See Page 30

See Page 42

See Page 45

R32

R33

Umatilla

UNION

UMATILLA

COUNTY
COUNTY

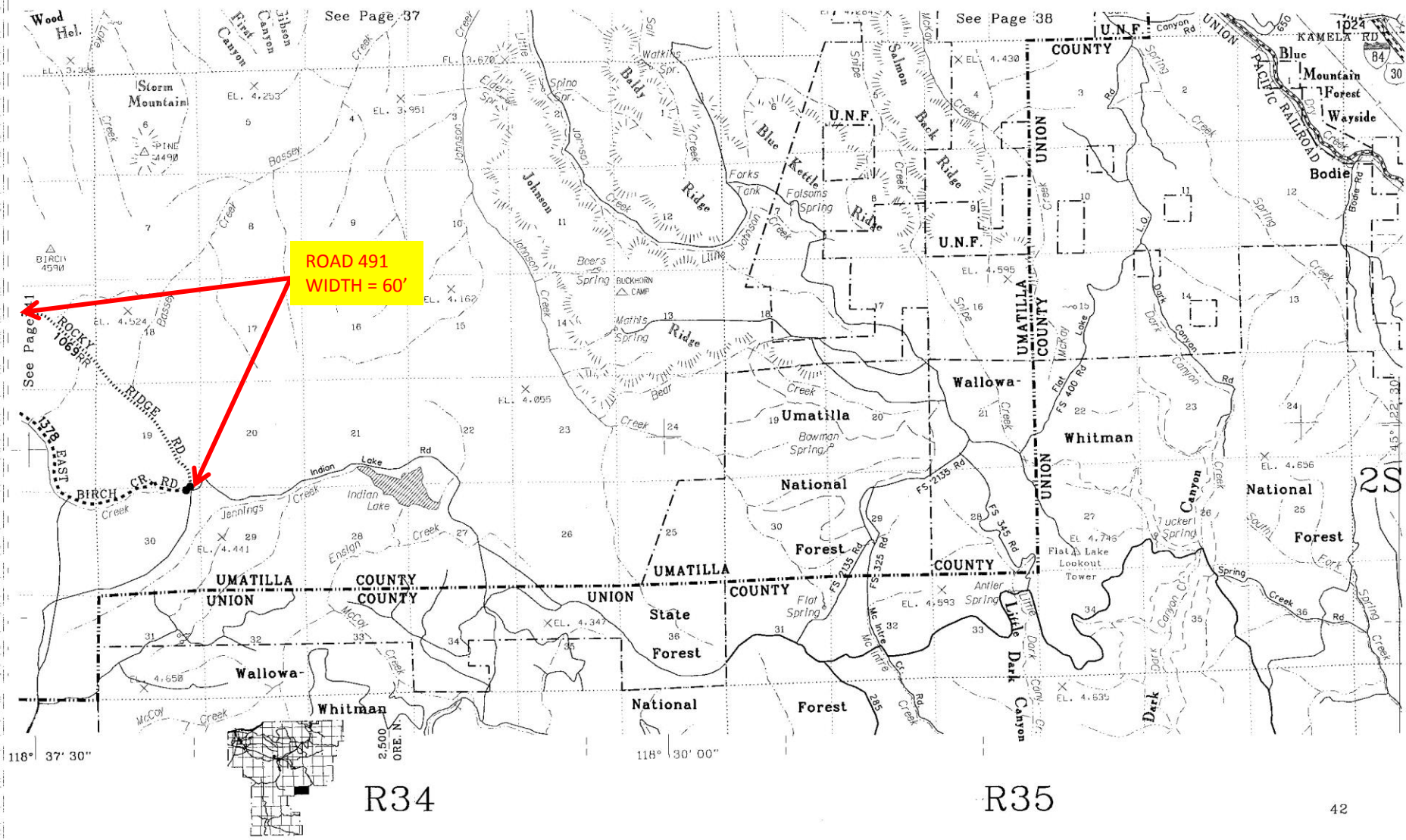
National
Forest

Jungle Springs

118° 52' 30"

118° 45' 00"

118° 37' 30"



**ROAD 491
WIDTH = 60'**

R34

R35