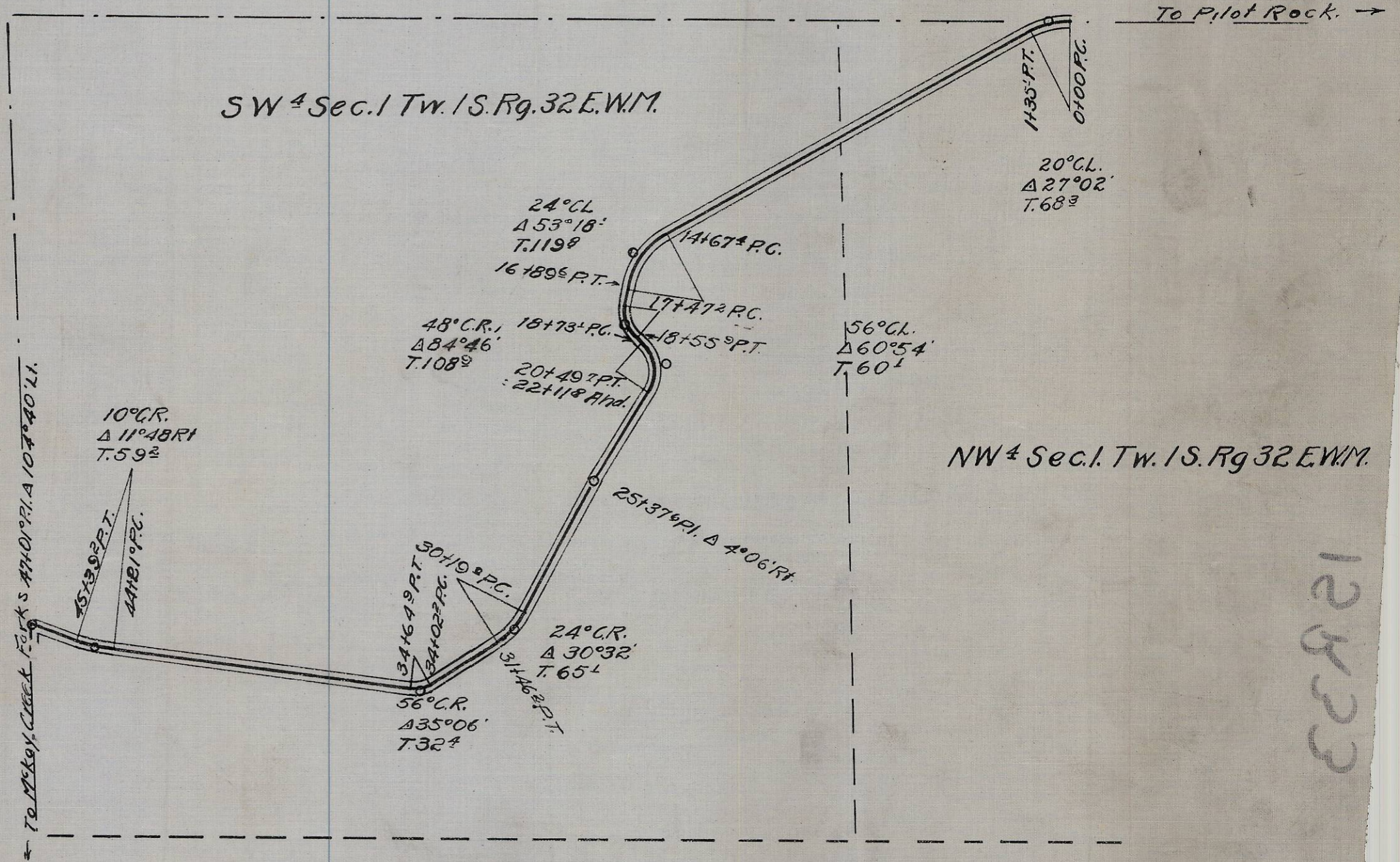


Box "M"

UMATILLA COUNTY ROAD DEPARTMENT
PLATE SHOWING ROAD AS SURVEYED
OVER THE NW⁴ & SW⁴ Sec. 1, Tw. 1 S. Rg. 32 E. W.M.
Scale 1" = 400' Nov. 16, 1931



NW⁴ Sec. 1, Tw. 1 S. Rg. 32 E. W.M.

12823

1301